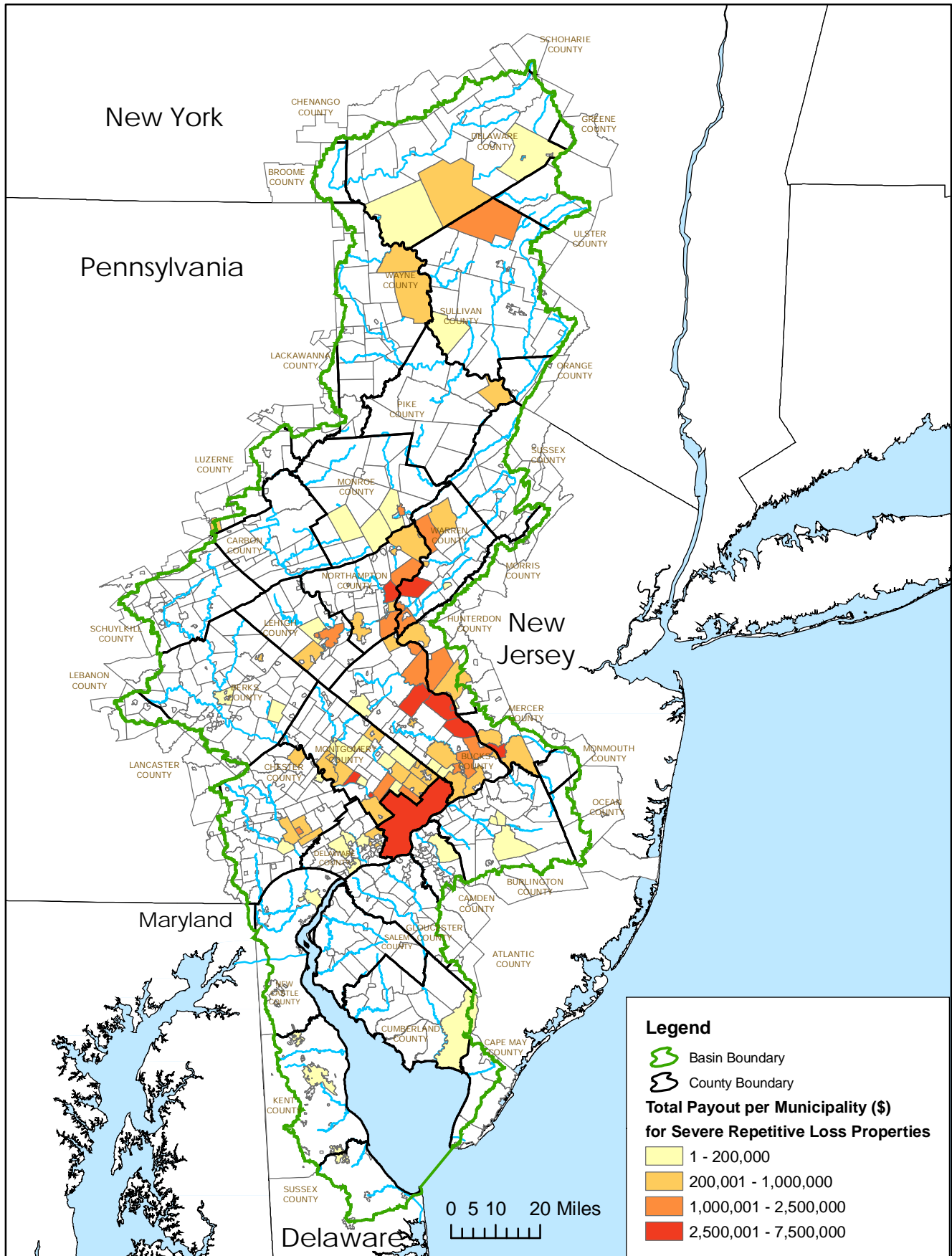


# Severe Repetitive Loss Properties in the Delaware River Basin



Source: Federal Emergency Management Agency (FEMA). A property is considered a severe repetitive loss property either when there are at least 4 losses each exceeding \$5000 or when there are 2 or more losses where the building payments exceed the property value. Losses from 01/01/1978 - 02/28/07 that are closed are considered.

Prepared by Delaware River Basin Commission Staff, April 2007.