

Delaware River Basin Commission

Overview of Water Supply and One Process - One Permit Program

*Chad Pindar, P.E.
Manager of Water Resource Planning*

Water Resource Management Branch

*September 7, 2018
Meerwald Legislative Education Sail*

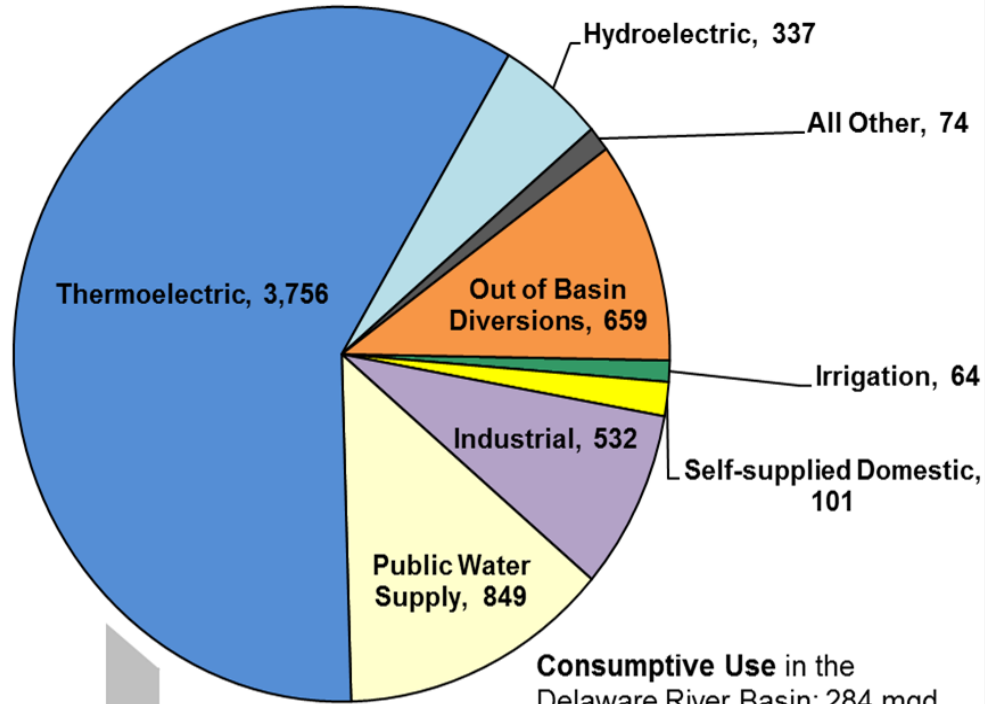


Delaware River Basin Commission
DELAWARE • NEW JERSEY
PENNSYLVANIA • NEW YORK
UNITED STATES OF AMERICA

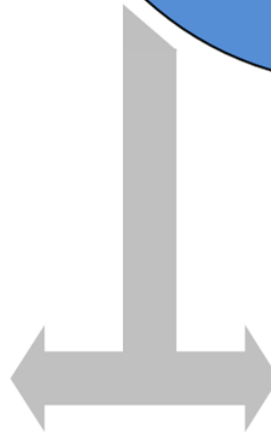
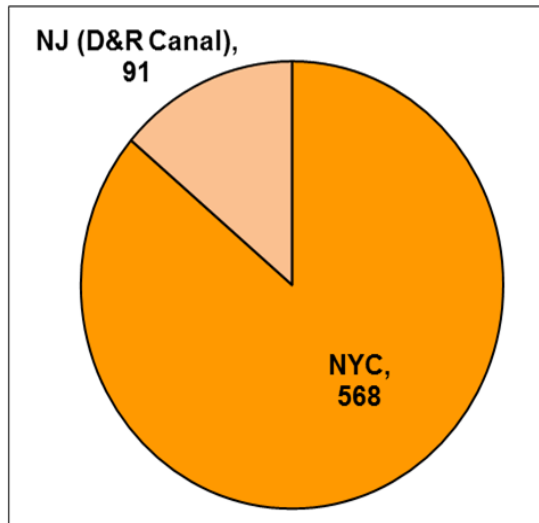
2014 Water Use in the DRB: 6.4 BGD

Total Water Withdrawals (ground and surface) from the Delaware River Basin: **6,372 mgd**

- Irrigation
- Self-supplied Domestic
- Industrial
- Public Water Supply
- Thermoelectric
- Hydroelectric
- All Other
- Out of Basin Diversions

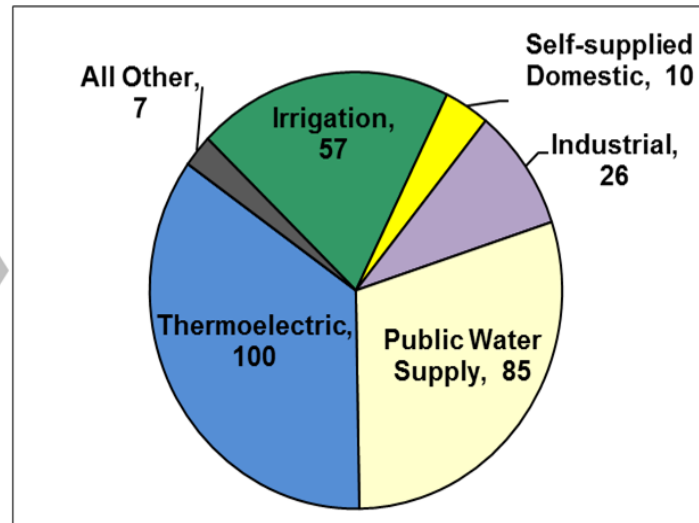


Major Exports from the Delaware River Basin: 659 mgd



Pie chart values in mgd (million gallons per day)

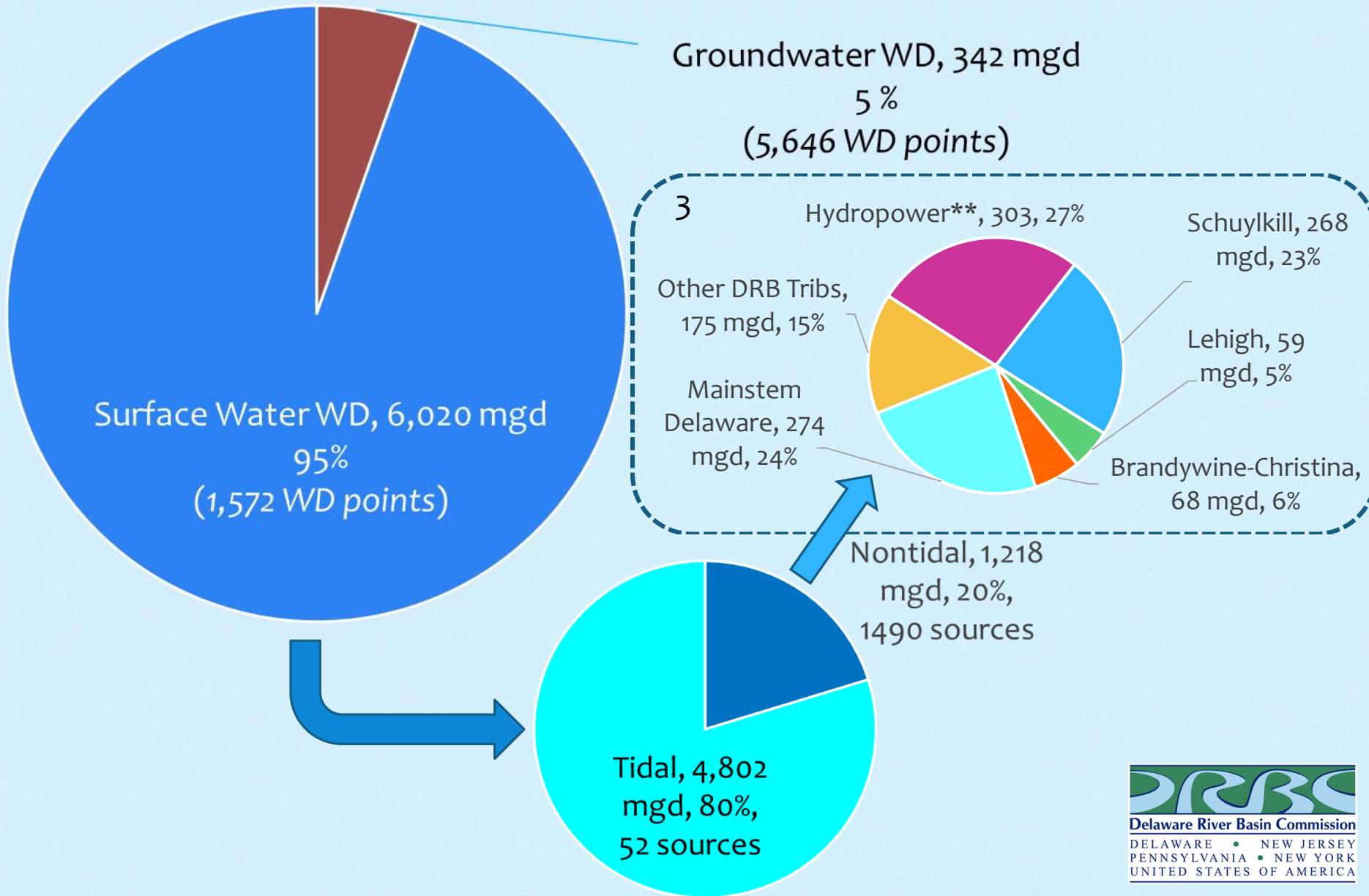
Consumptive Use in the Delaware River Basin: 284 mgd



Consumptive Use:

- * PWS: 30%
- * Irrigation: 20%
- * Thermo: 35%
- * Industrial: 9%
- * All other: 6%

Total DRB WDs in 2014 by Type/Location



Water Withdrawals & Future Demand

Delaware River Basin

Surface Water Withdrawals

Withdrawal Category

- Public Water Supply
- Agriculture
- Golf
- Industrial
- Thermoelectric
- Other

Volume in Million Gallons per Day

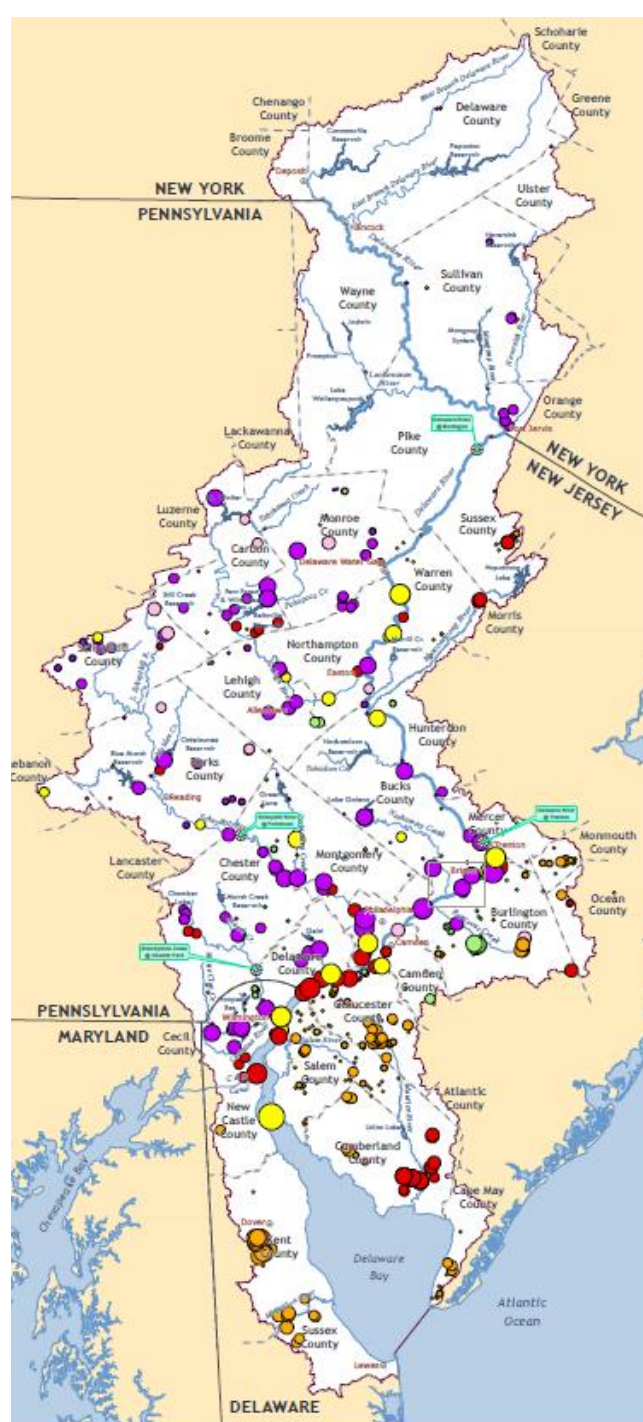
- 0 - 0.5 MGD
- 0.6 - 1.0 MGD
- 1.1 - 5.0 MGD
- 5.1 - 10 MGD
- 10 - 100 MGD
- 100 - 1,000 MGD
- Greater than 1,000 MGD

● USGS Stream Gage Location

Inset Map



- The drought of record, which occurred in the period 1961-1967, shall be the basis for determination and planning of dependable Basin water supply.
- DRBC allocates water via docket.
 - >1,200 active docket approvals for water (groundwater & surface water).
 - ~ 1,500 surface water withdrawals approved in ~375 dockets.
 - ~5,600 groundwater withdrawals approved in ~850 dockets
- Project future water demands.



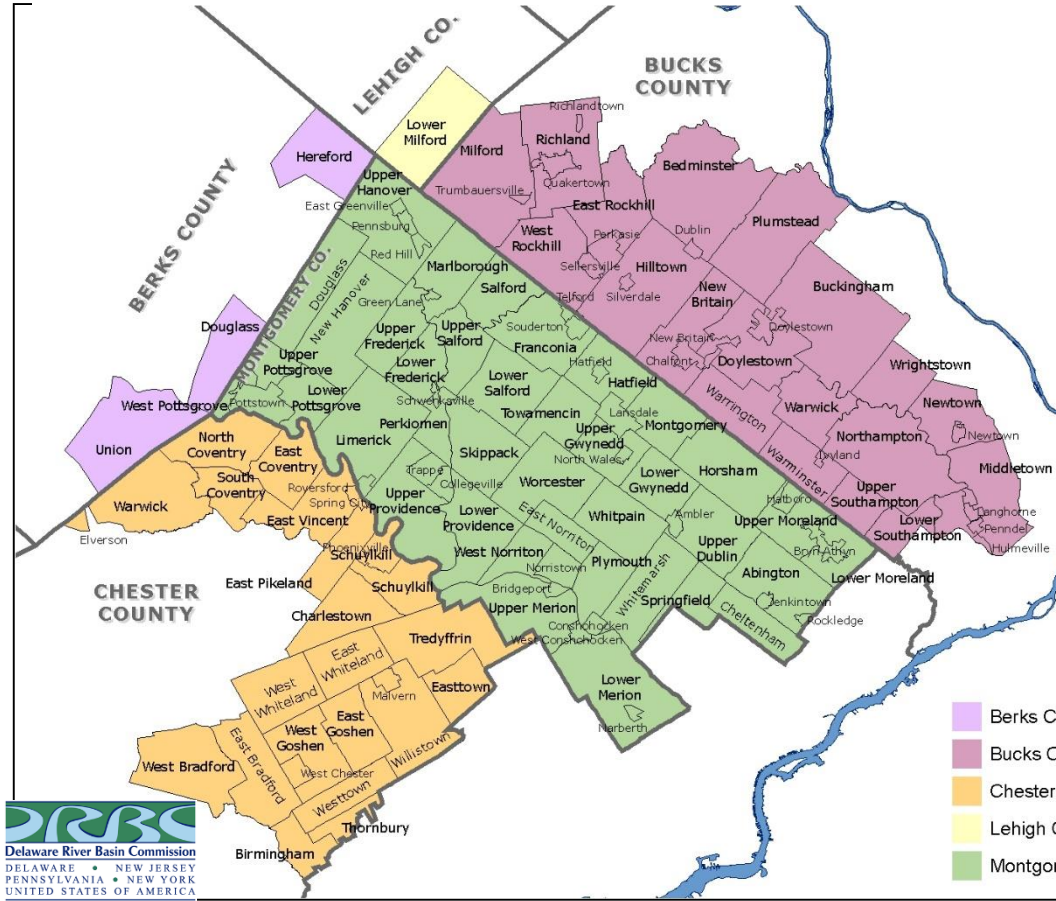
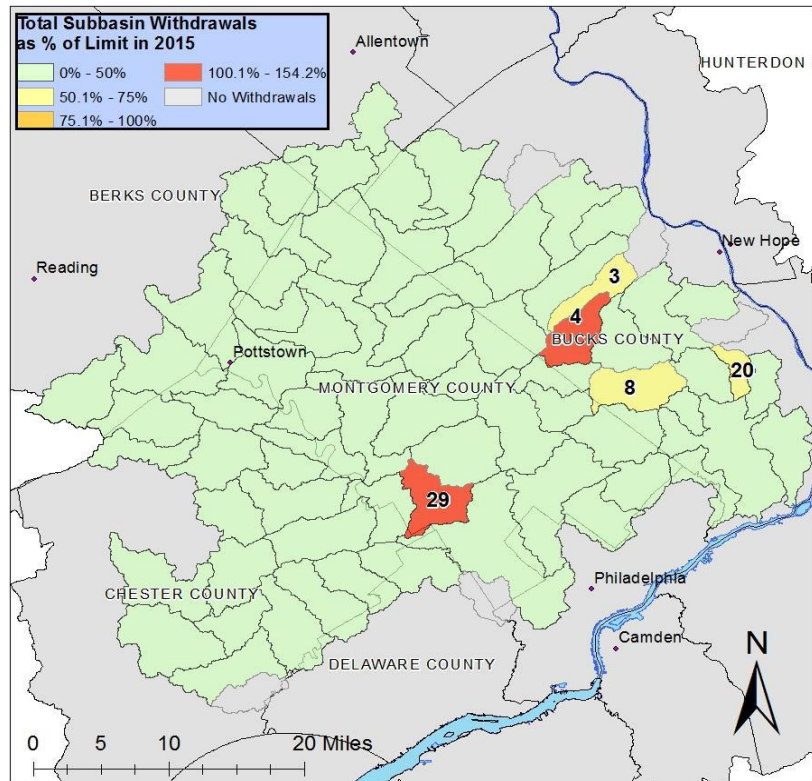
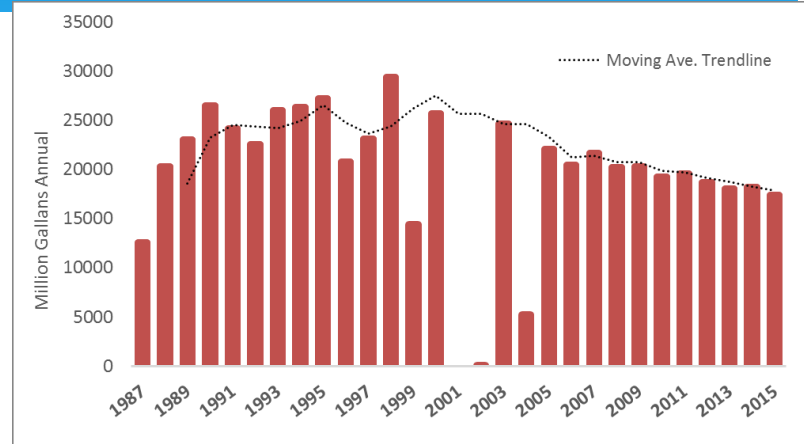
DRBC Water Supply Management Programs

- * DRBC provides reservoir releases for **salinity control in the Estuary** (Amy Shallcross).
- * DRBC requires consumptive use replacement by all Power Producers (Trenton, NJ flow gage) for **salinity control in the Estuary**.
- * DRBC requires Exelon Limerick Generating Station to replace consumptive use to specifically **protect the Schuylkill River** (Pottstown, PA flow gage) **and downstream Public Water Supplies** (i.e. PWD).
- * DRBC requires consumptive use replacement in the Brandywine River watershed (Chaddsford, PA gage) to **protect low flows** and **downstream Public Water Supplies** (i.e. Wilmington).
- * DRBC manages the Southeast PA Groundwater Protected Area.

Southeastern PA Groundwater Protected Area

Established in 1980 to help PA:

- prevent long-term depletion of groundwater
- protect stream flows during drought
- protect rights of present and future users
- acquire additional information to manage resource



One Process - One Permit Program

- ❑ **Compact § 1.5 – authorizes and directs DRBC to utilize and employ existing offices and agencies of government to the fullest extent feasible and advantageous for purposes of the Compact.**
- ❑ **Compact § 3.9 – DRBC shall promote & aid the coordination of the activities and programs of federal, state, municipal and private agencies concerned with water resources administration in the basin.**
- ❑ **RPP § 2.3.3 – authorizes DRBC to enter into administrative agreements (AAs) with federal & state agencies to meet the objectives of its regulatory programs.**

Rulemaking & Benefits of One Process – One Permit Program

- ❑ **Rulemaking to amend RPP - Resolution No. 2015-9**
 - Final Rule effective date March 4, 2016
- ❑ **Administrative Agreements (AAs):**
 - NJ - March, 2015
 - NY- March, 2016
- ❑ Provide for eligible projects to be managed through a single process resulting in one decision or approval (permit).
- ❑ Make process simpler for regulated entities.