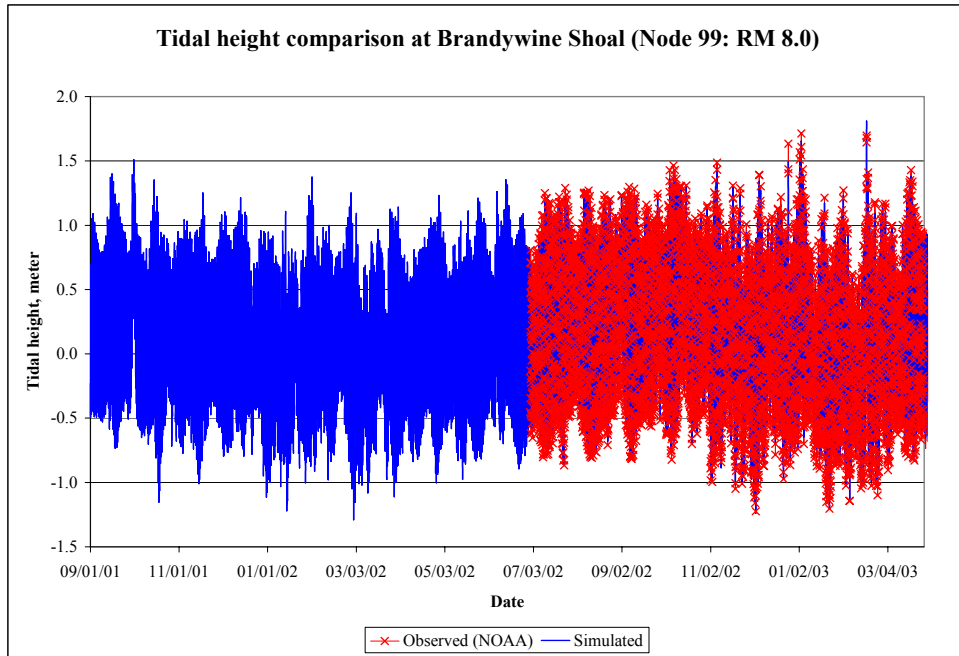


APPENDIX C

Calibration Results of the DYNHYD5 Hydrodynamic Model for the Delaware River Estuary:

Tidal Height Comparison

(a)



(b)

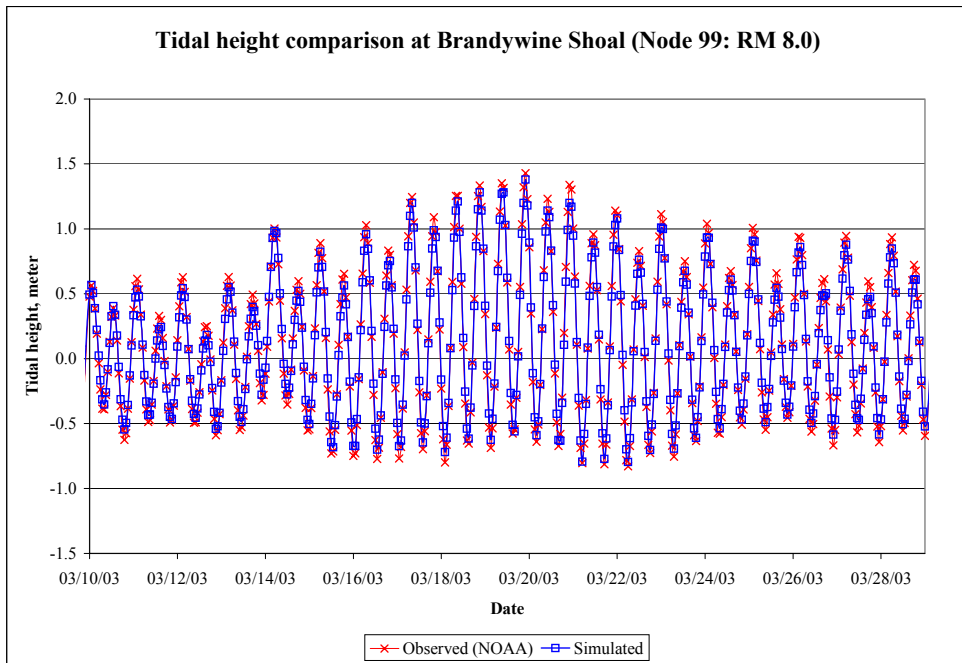
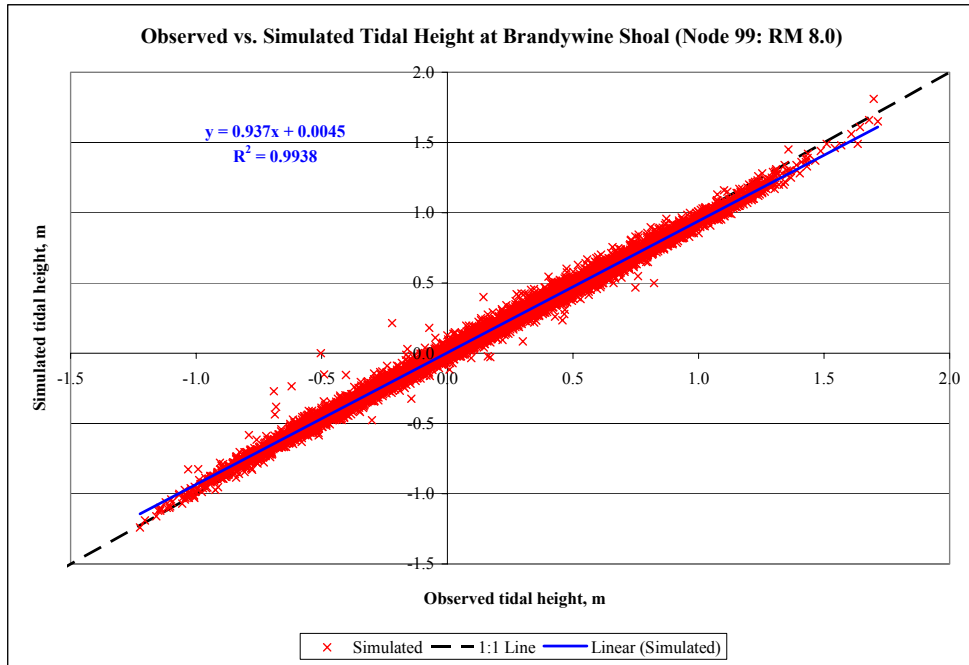


Figure C-1: The observed and the simulated tidal heights at Brandywine Shoal (River Mile 8.0): (a) for the entire calibration period; (b) from the period March 10, 2003 to March 31, 2003.

(c)



(d)

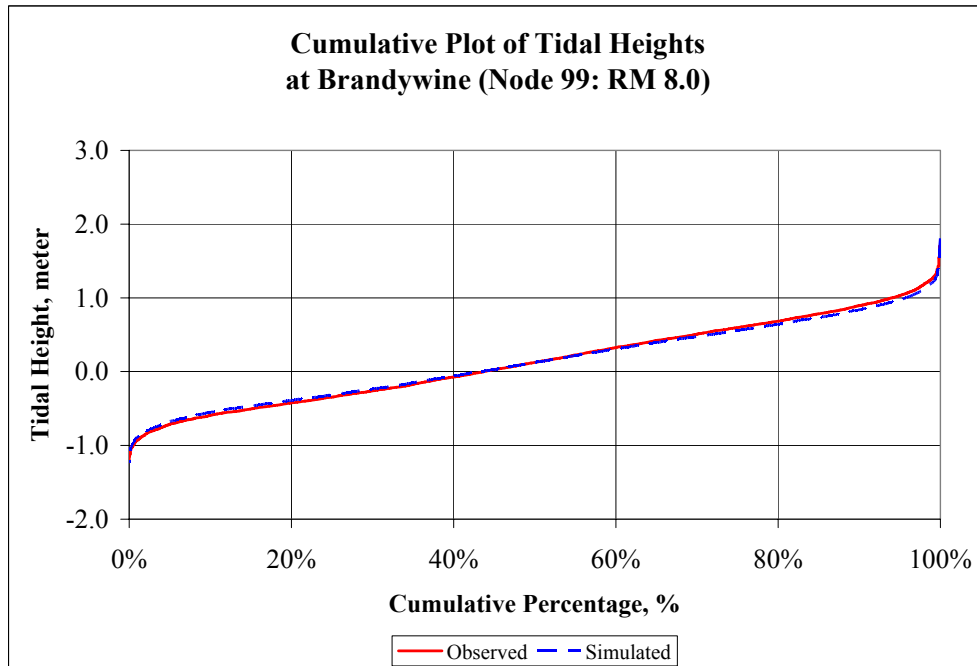


Figure C-1: The observed and the simulated tidal heights at Brandywine Shoal (River Mile 8.0): (c) Linear regression results (n=6,510); (d) cumulative frequency distribution curve.

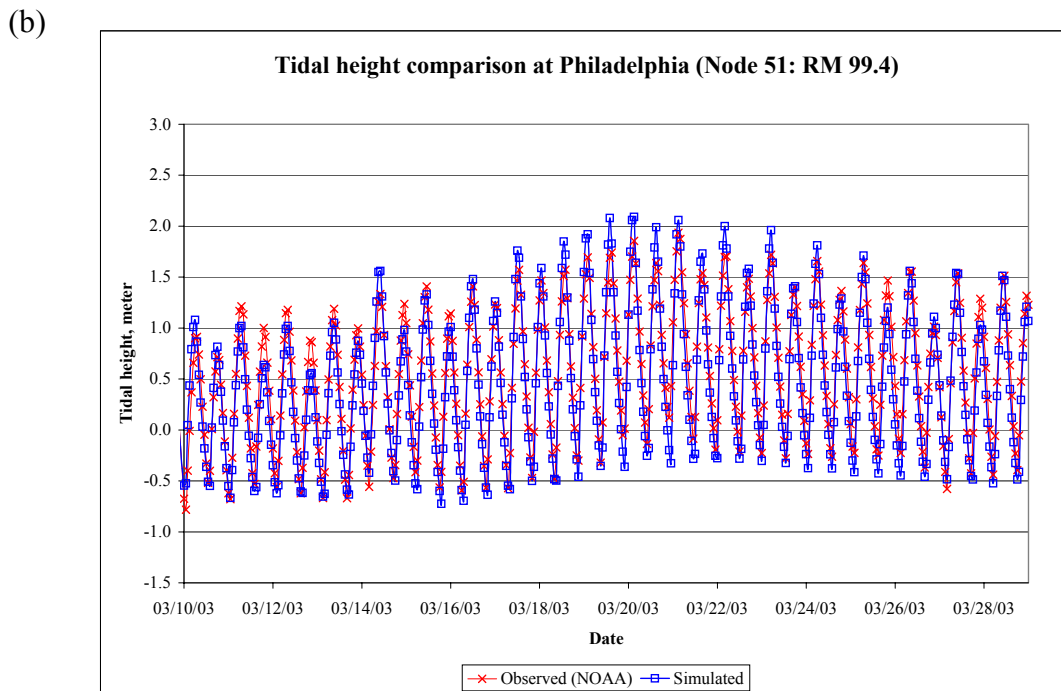
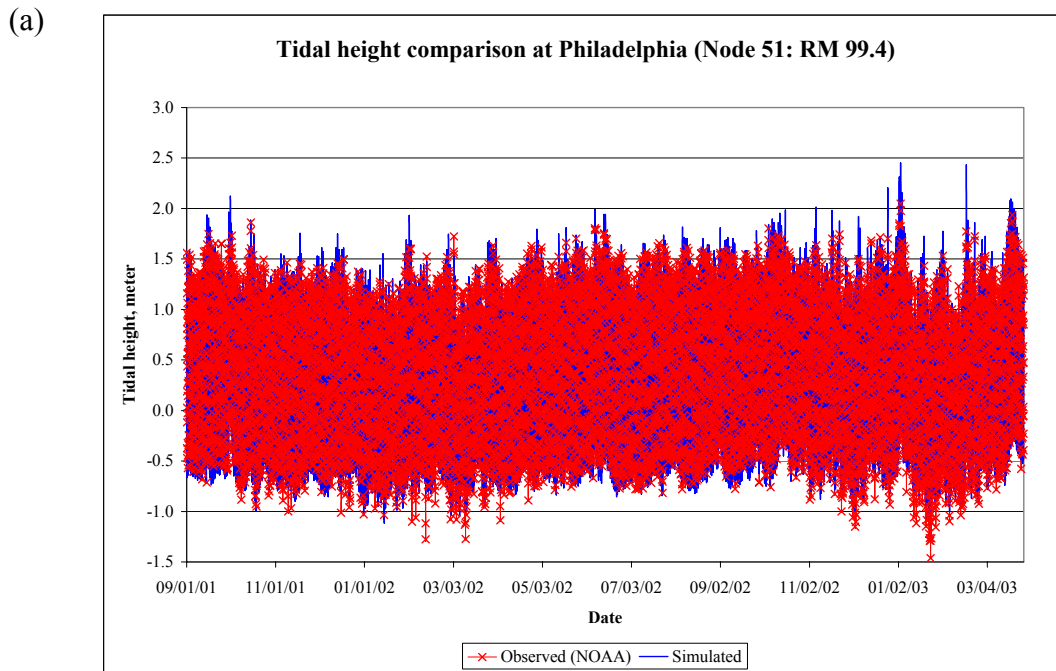
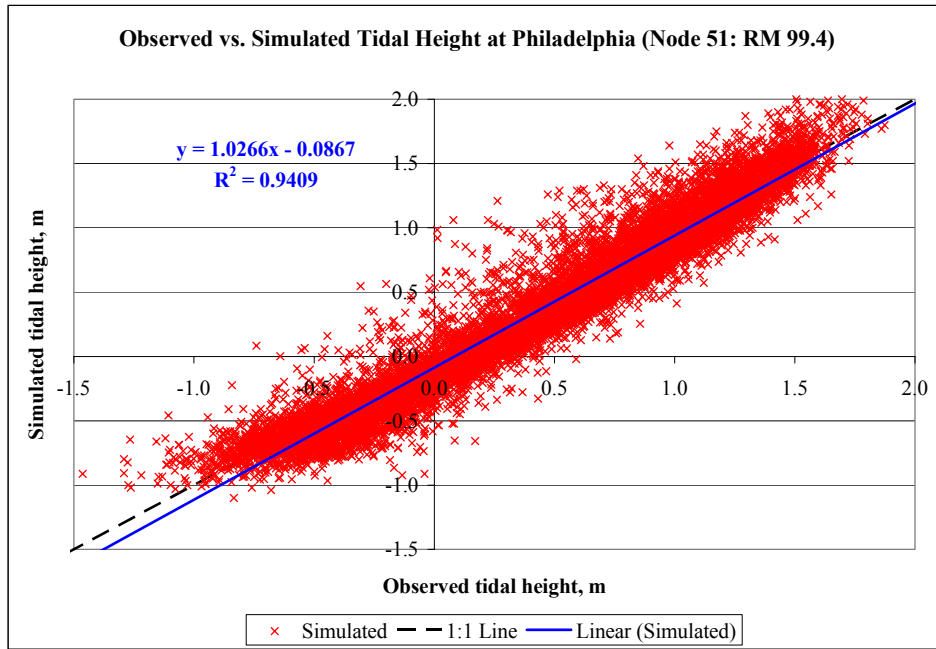


Figure C-2: The observed and the simulated tidal heights at Philadelphia (River Mile 99.4): (a) for the entire calibration period; (b) from the period March 10, 2003, to March 31, 2003.

(c)



(d)

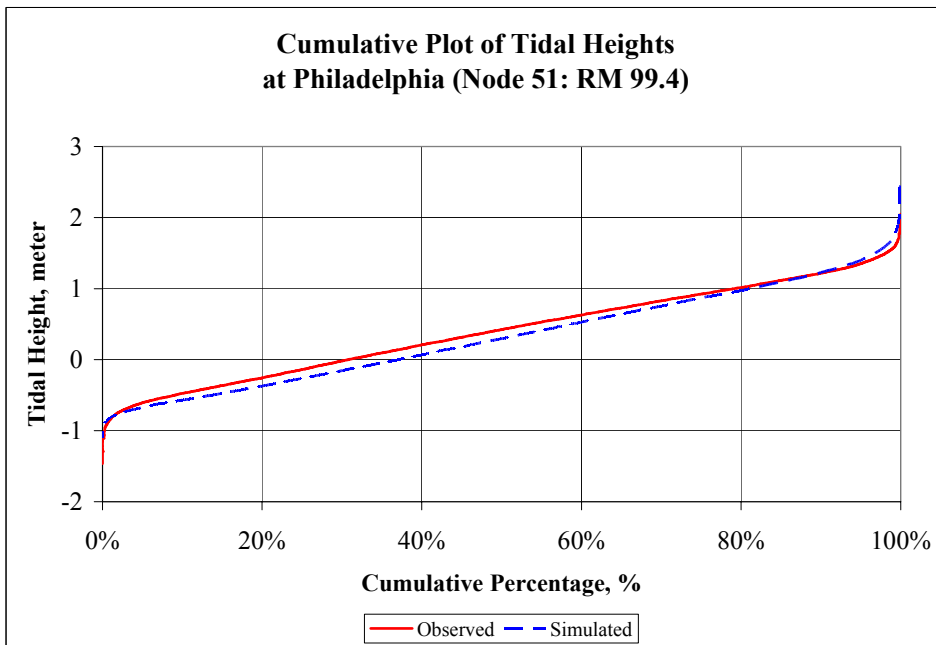
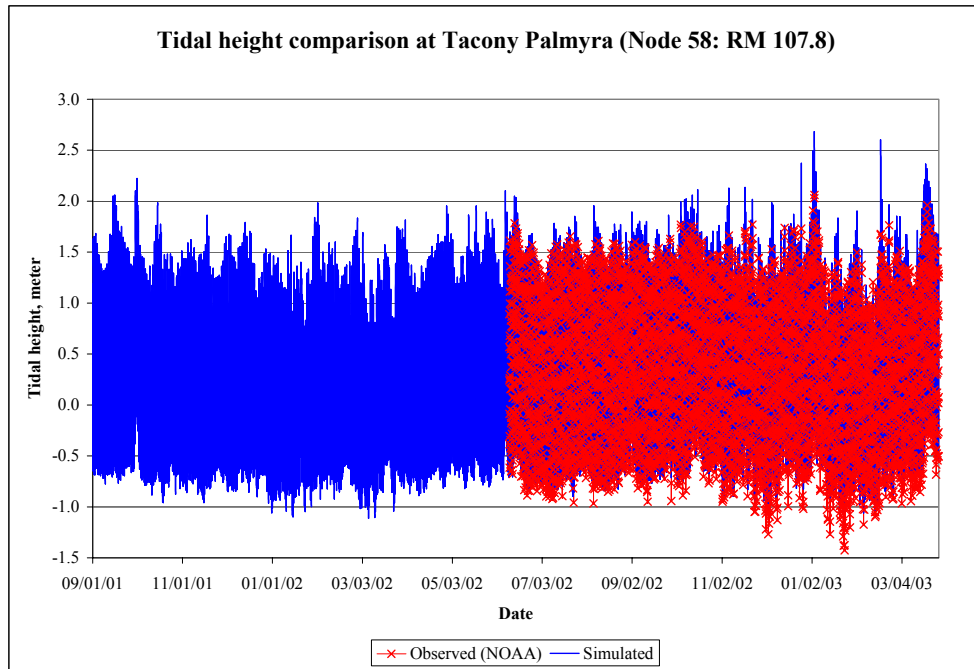


Figure C-2: The observed and the simulated tidal heights at Philadelphia (River Mile 99.4): (c) Linear regression results (n=13,777); (d) cumulative frequency distribution curve.

(a)



(b)

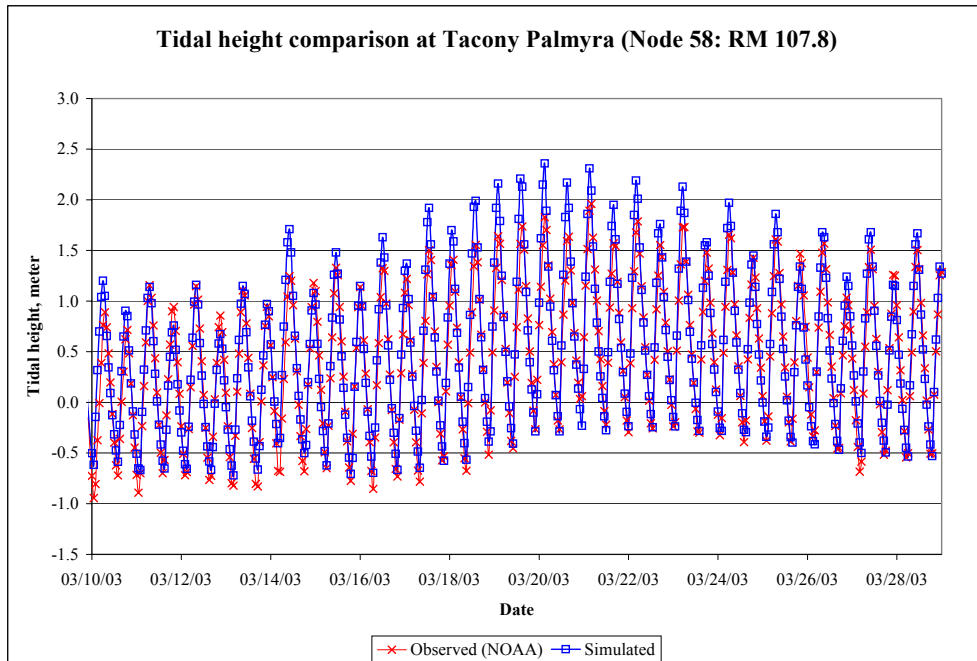
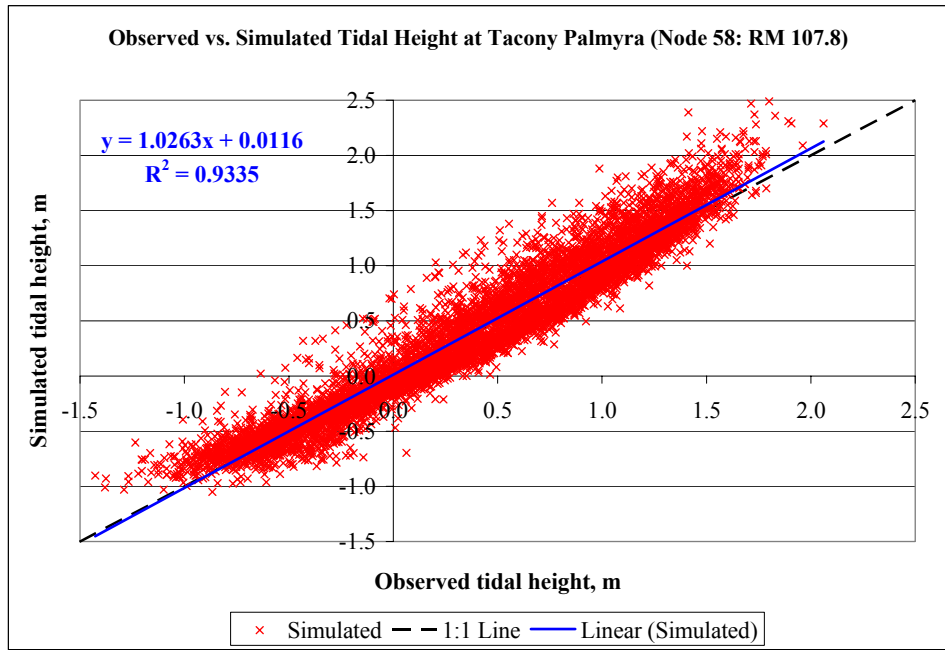


Figure C-3: The observed and the simulated tidal heights at Tacony Palmyra (River Mile 107.8): (a) for the entire calibration period; (b) from the period March 10, 2003 to March 31, 2003.

(c)



(d)

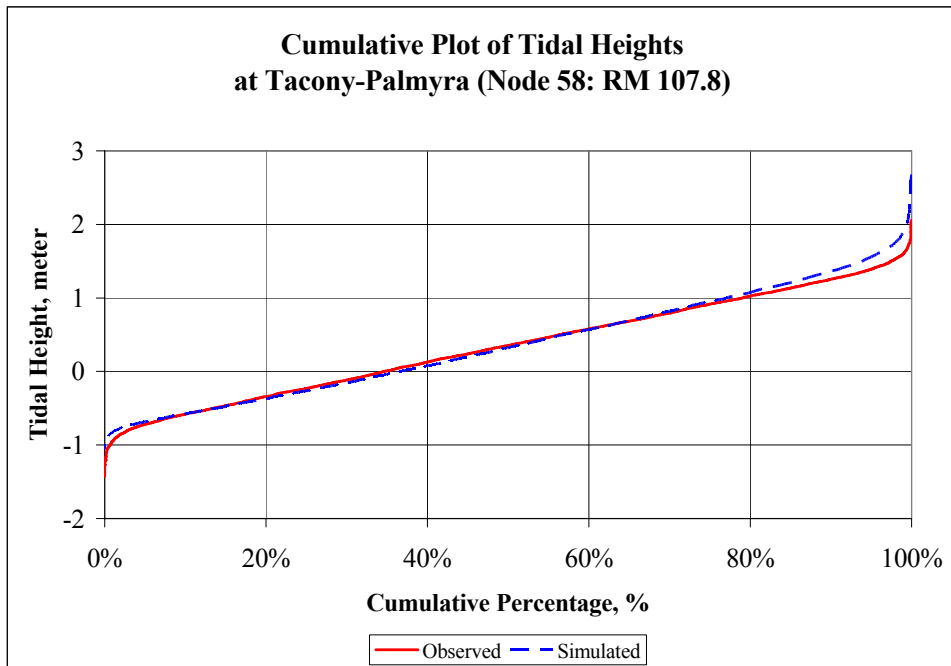
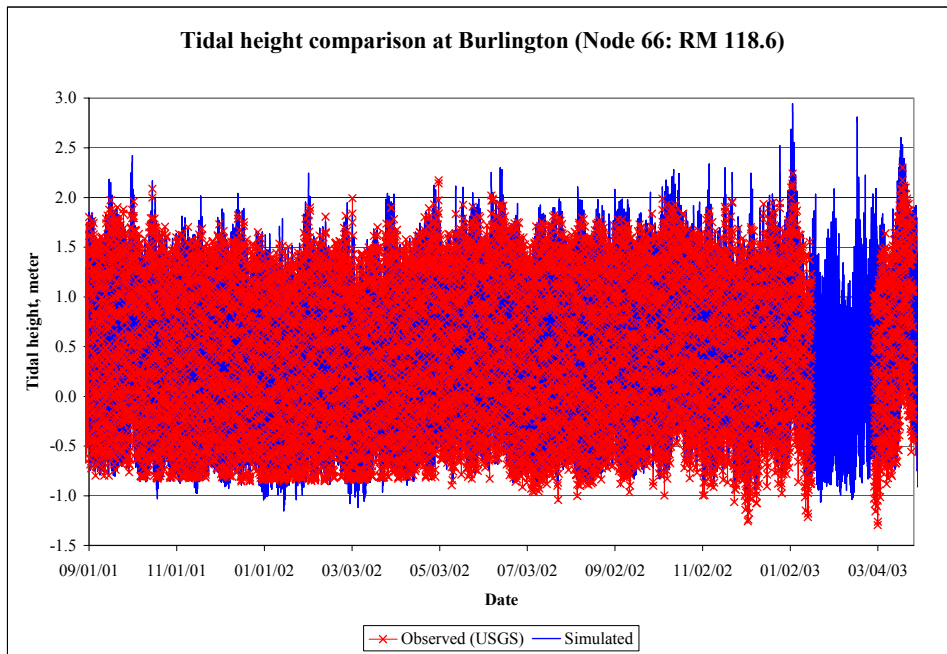


Figure C-3: The observed and the simulated tidal heights at Tacony Palmyra (River Mile 107.8): (c) Linear regression results (n=6,994); (d) cumulative frequency distribution curve.

(a)



(b)

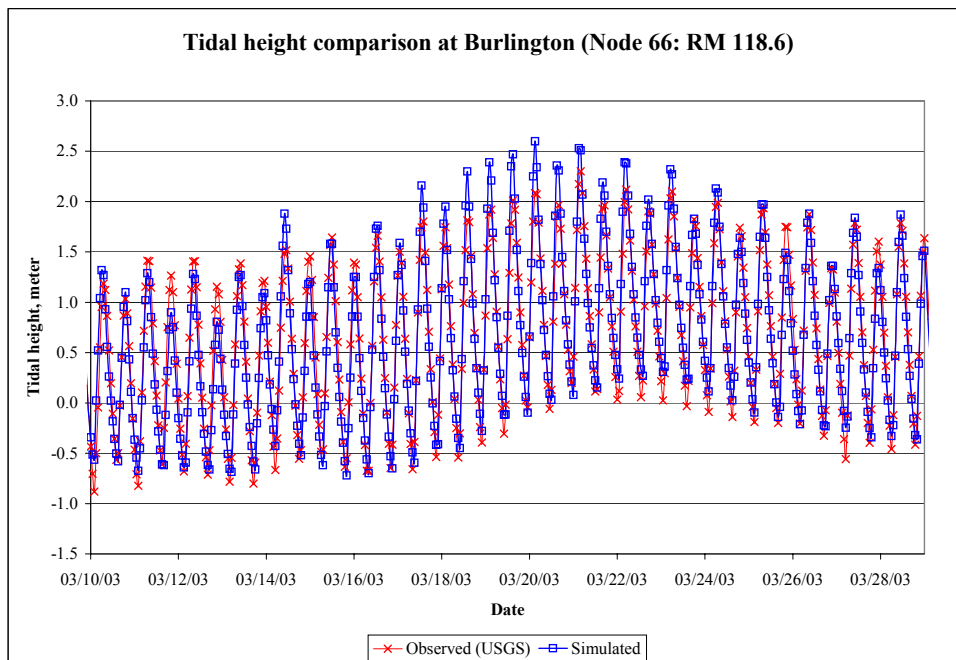
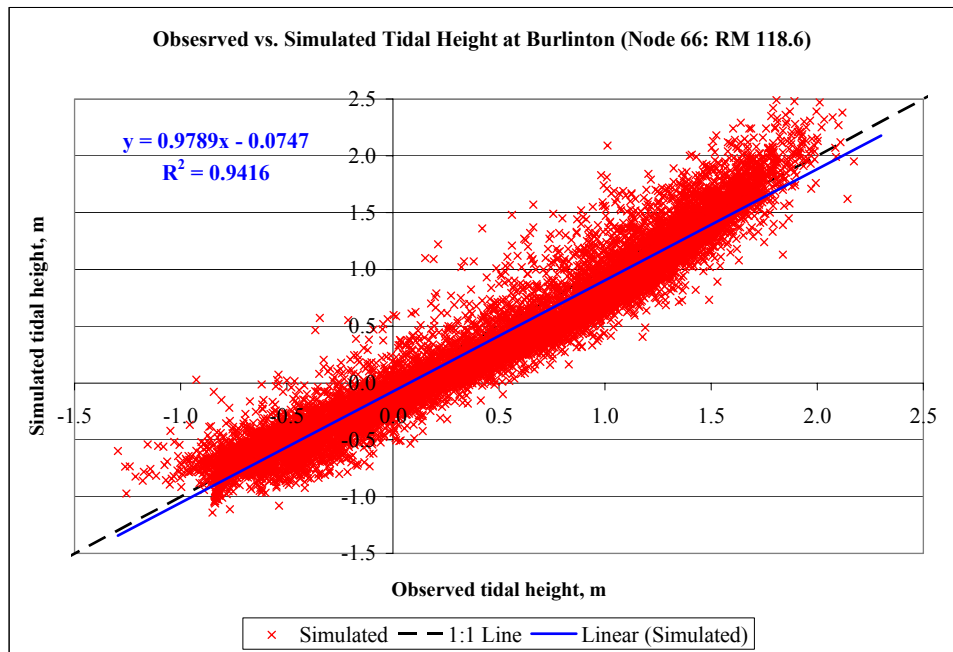


Figure C-4: The observed and the simulated tidal heights at Burlington (River Mile 118.6): (a) for the entire calibration period; (b) from the period March 10, 2003 to March 31, 2003.

(c)



(d)

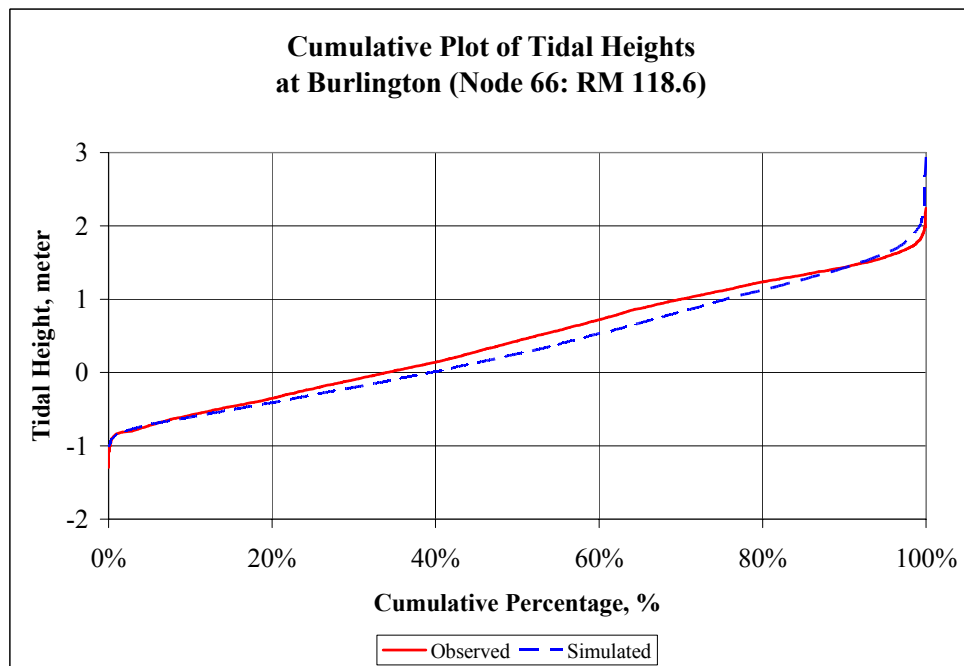
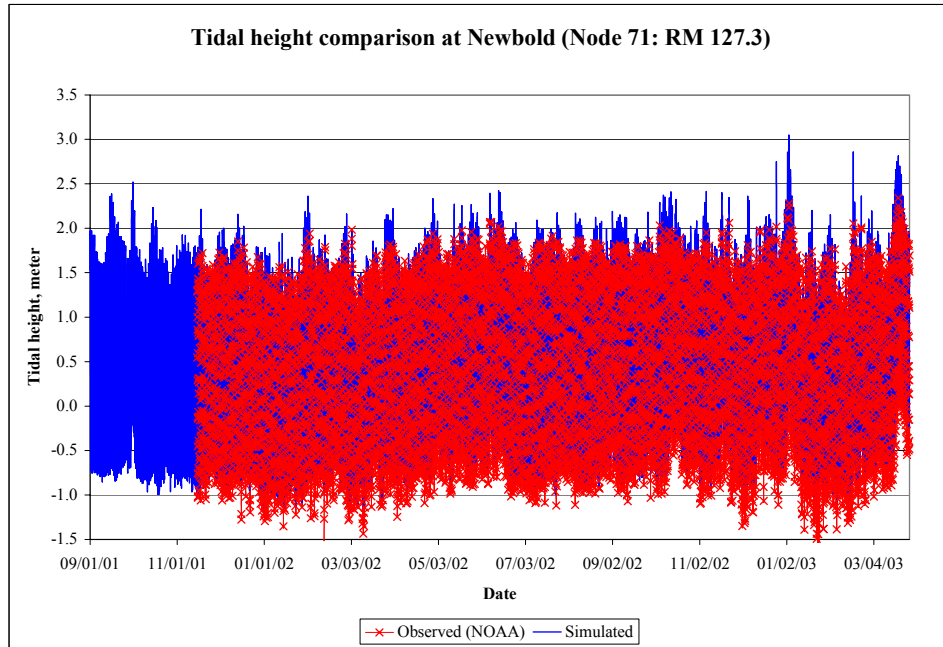


Figure C-4: The observed and the simulated tidal heights at Burlington (River Mile 118.6): (c) Linear regression results (n=12,436); (d) cumulative frequency distribution curve.

(a)



(b)

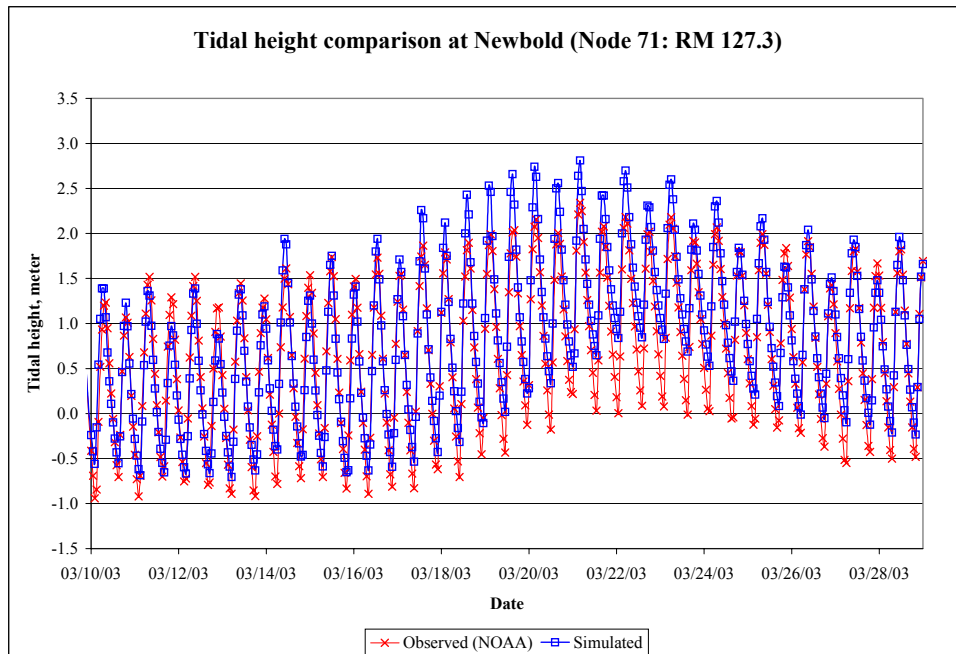
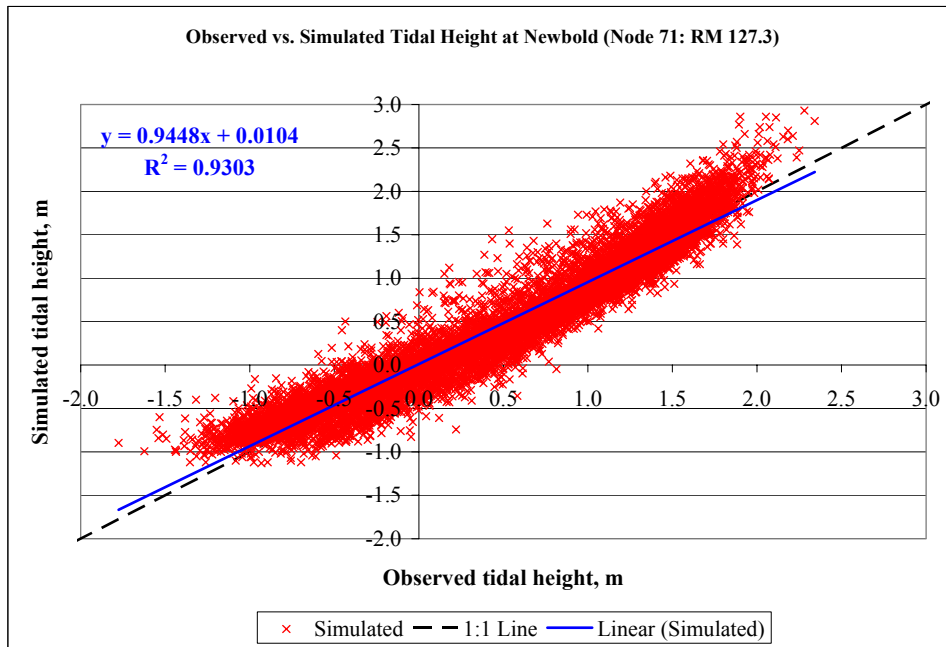


Figure C-5: The observed and the simulated tidal heights at Newbold (River Mile 127.3): (a) for the entire calibration period; (b) from the period March 10, 2003 to March 31, 2003.

(c)



(d)

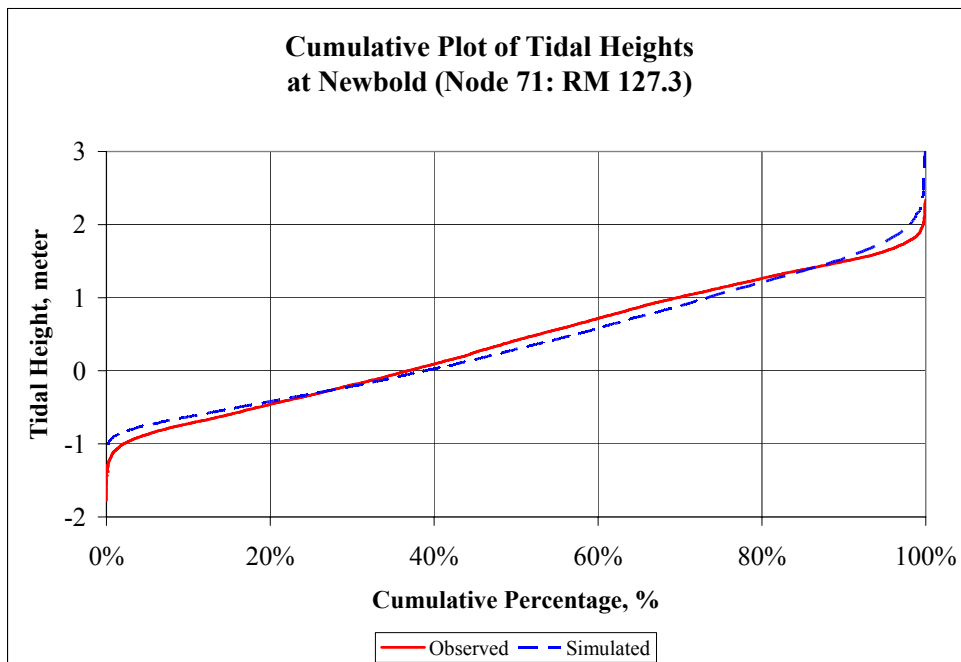


Figure C-5: The observed and the simulated tidal heights at Newbold (River Mile 127.3): (c) Linear regression results (n=11,977); (d) cumulative frequency distribution curve.