

The Delaware River Basin Commission

**Managing, Protecting and
Improving the Basin's Water
Resources Since 1961**

**Delaware River Governors'
Leadership Summit**

*Independence Seaport Museum
Philadelphia, Pa.
May 16, 2019*



Photo courtesy of the U.S. Army Corps of Engineers



Photo: <http://pariveroftheyear.org/wp-content/uploads/2014/01/cody20102.jpg>



The Delaware River and its Watershed



- The Delaware River forms an interstate boundary its entire 330 mile length.
- Water resource and watershed management and leadership through (your choice):
 - ✓ Cooperation and Collaboration
 - * Competition and Conflict
 - * Crisis

A Vision for Our Shared Water Resources with the Force of Law The Delaware River Basin Compact

“...the signatory parties recognize the water and related resources of the **Delaware River Basin** as **regional assets** vested with local, State and National interests, **for which they have joint responsibilities...**”



State of the Basin...Then



*Slaughterhouses discharging in 1928
(courtesy of the Phila. Water Dept. Historic Collection)*



*Fish kill on the Delaware from oil spill in 1929
(courtesy of Temple University Archives)*

State of the Basin ... Then



*Easton-Phillipsburg free bridge in 1955
(file photo courtesy of lehighvalleylive.com)*



*Delaware River at Trenton in 1965
(DRBC photo)*

The Delaware River Today



Photo: Greg Breese, USFWS



Photo: Justin Curtis



Photo: Delaware River Sojourn



Photo: <https://camdenwd.weebly.com/>



Delaware River Basin Commission



New Jersey Governor Phil Murphy, DRBC Chair



New York Governor Andrew Cuomo, DRBC Vice Chair



Pennsylvania Governor Tom Wolf



Delaware Governor John Carney



Major General Jeffrey Milhorn,
U.S. Army Corps of Engineers



DRBC Core Water Resource Management Responsibilities



- **Water FLOW** - Adequate, sustainable and resilient.
- **Water QUALITY** - Clean and healthy.

Partnering to achieve for the Basin what individual members could not accomplish alone.

When was the last drought?



Photo: NYCDEP

When was the last drought?



*Cannonsville Reservoir
December 2001*

Photo: NYCDEP

DRBC Collaborative Results

DRBC Comprehensive Plan includes more than 100 Billion Gallons of water stored for lower Basin drought management and flow management.



DRBC Collaborative Results



Exelon Limerick Generating Station, Montgomery County, Pa.

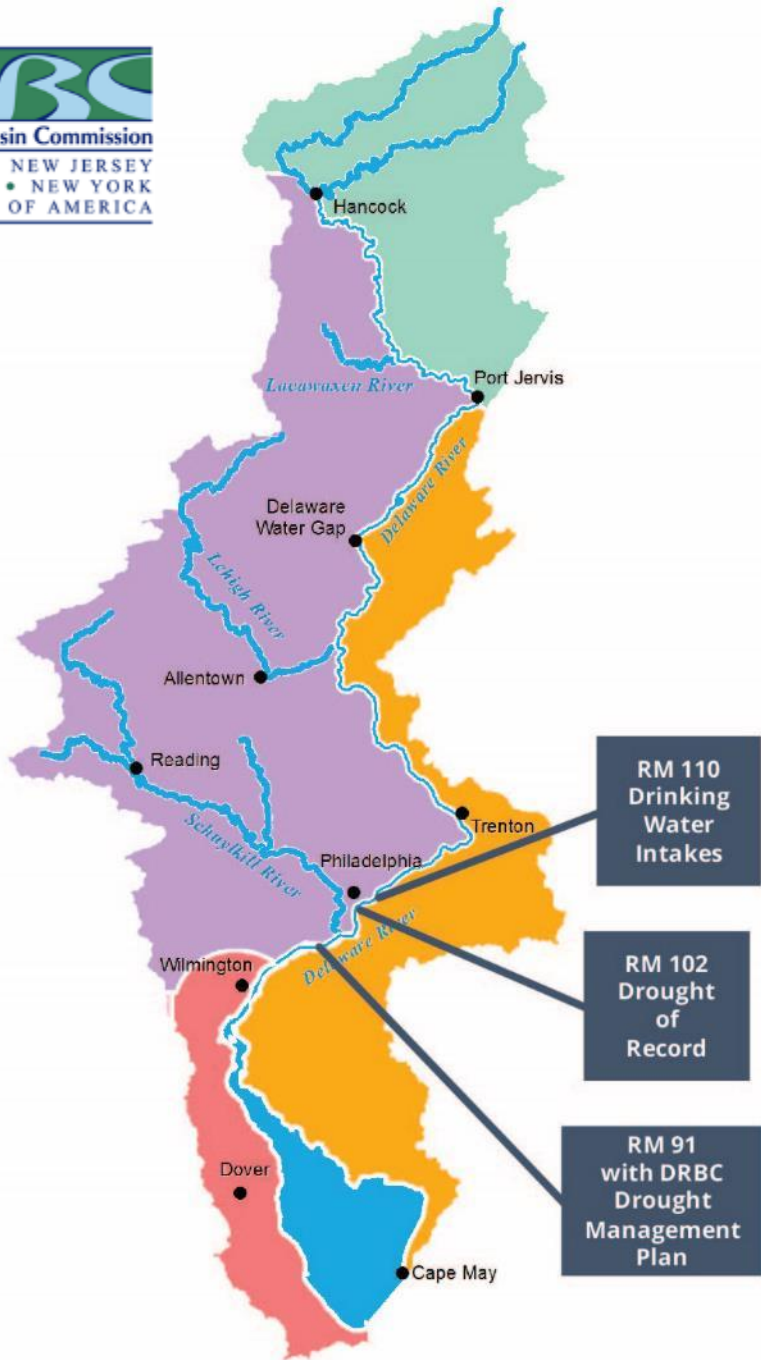
Photo: Arturo Ramos [CC BY-SA 2.5 (<https://creativecommons.org/licenses/by-sa/2.5/>)]



Merrill Creek Reservoir,

Warren County, N.J. Photo: <https://merrillcreek.com/>

DRBC Comprehensive
Plan requires
consumptive use
mitigation for
thermoelectric power.



DRBC Collaborative Results

DRBC Drought Management Plan protects drinking water and industrial intakes from salt intrusion.

Description	River Mile
Philadelphia and NJAW Drinking Water Intakes	110
Max. Salt Line during 1960s drought (without Trenton Flow Objective)	102
Max. Salt Line since DRBC drought management plan (with Trenton Flow Objective)	91

DRBC Collaborative Results



*Frances E. Walter Reservoir, USACE
Luzerne County, PA
Photo courtesy of the U.S. Army Corps of Engineers*



*Blue Marsh Reservoir, USACE
Berks County, PA*

Photo: http://photos1.meetupstatic.com/photos/event/8/c/f/2/600_430296082.jpeg



*Beltzville Reservoir, USACE
Carbon County, PA*

Reservoirs in the DRBC's Comprehensive Plan have resulted in **more than \$500 million in cumulative flood loss prevention.**

Water Quality

- * Together, define how we want to use this resource.
- * Collaborate to achieve Clean Water Act “Fishable/ Swimmable” goals.
- * Examples:
 - * Public water supply (drinking water)
 - * Aquatic Life
 - * Water based recreation
 - * Fishing / fish consumption
 - * Industrial water supply
 - * Agricultural water supply



Photo: Rich Evans, National Park Service

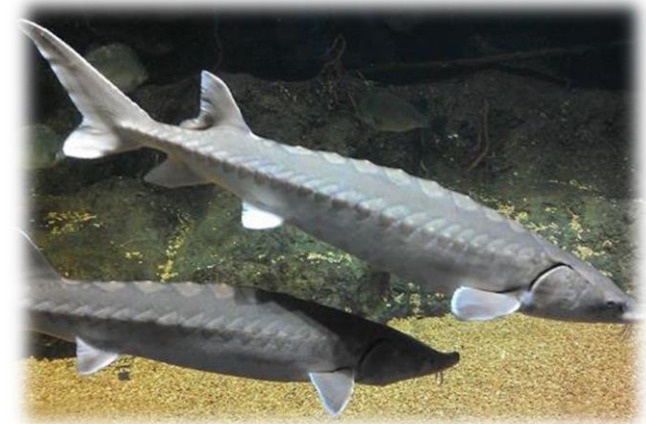
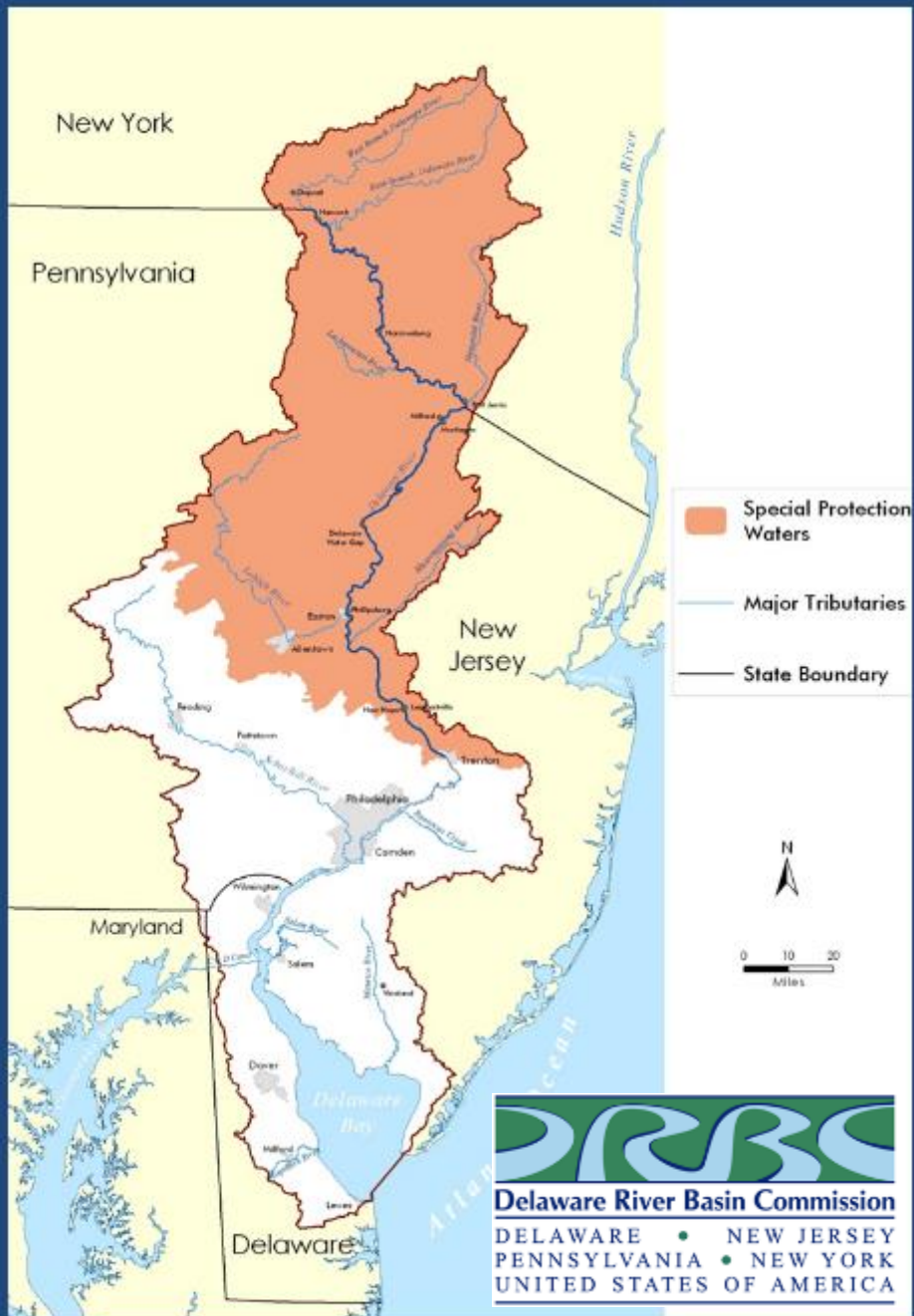


Photo: Fisheries.noaa.gov

DRBC Collaborative Results

- **197 river miles of exceptional quality** (out of 330 river miles), defined and managed as **Special Protection Waters**.
- Believed to be the longest anti-degradation reach in the U.S.
- Using monitoring and modeling to keep clean waters clean!

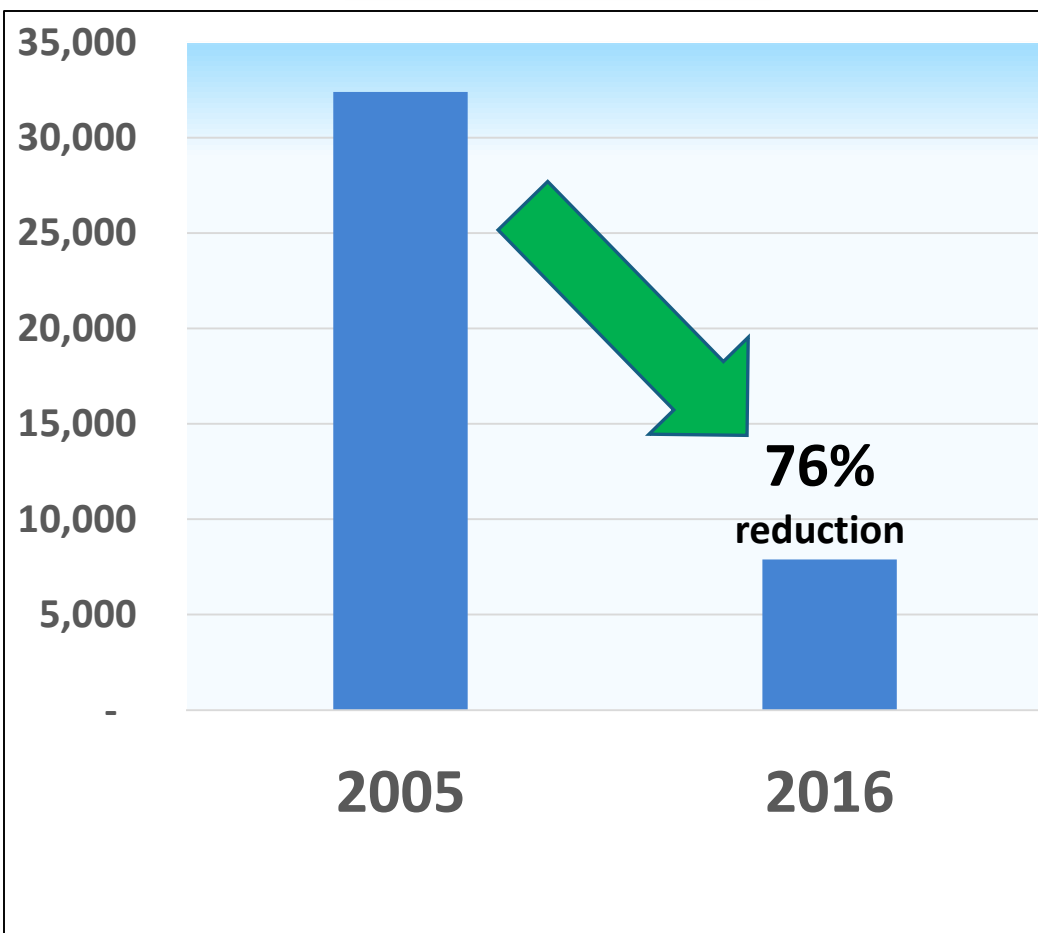


DRBC Collaborative Results



Photo: U.S. EPA

- Clean-up of legacy pollutants in the Delaware Estuary
- **76% reduction in PCB discharges from top point sources** since 2005.



NEW JERSEY, DELAWARE EASE
ADVISORIES ON CERTAIN FISH

TOM JOHNSON | FEBRUARY 21, 2018

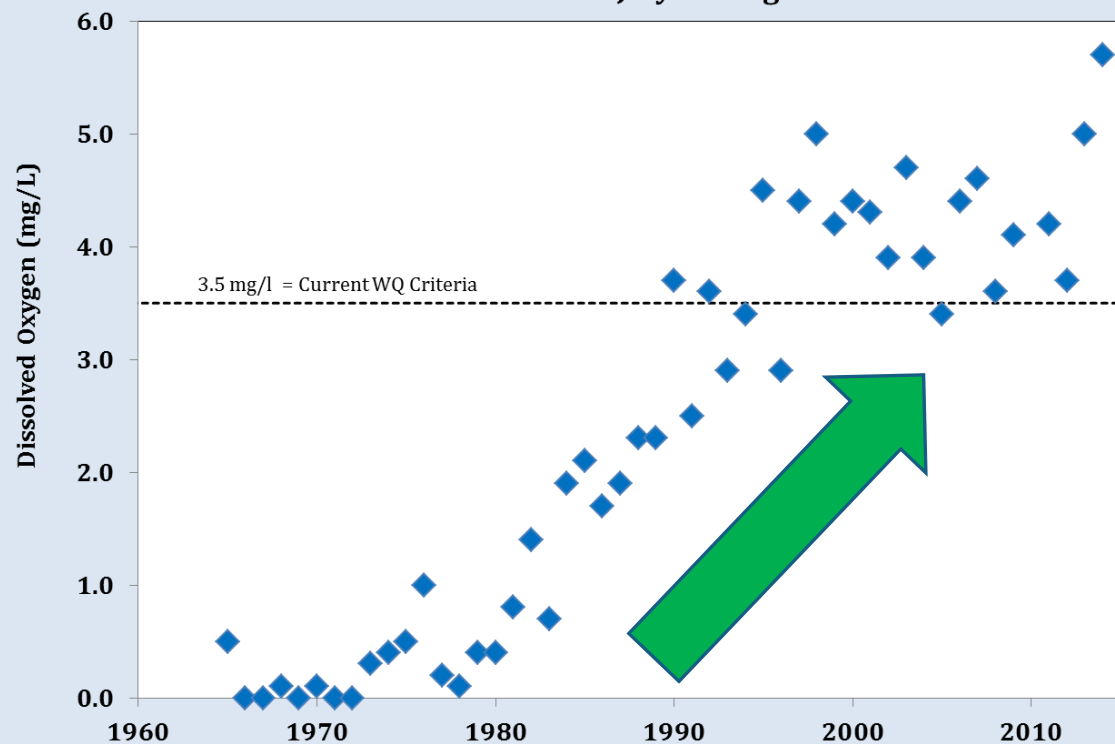
<https://www.njspotlight.com/stories/18/02/20/new-jersey-delaware-ease-advisories-on-certain-fish/>



Fisheries.noaa.gov

DRBC Collaborative Results

Delaware River Dissolved Oxygen
@ River Mile 100/ Ben Franklin Bridge
Minimum of all July Averages



- **A dead zone in the Estuary restored.**
- Significant improvement in dissolved oxygen.



News / Local News / Easton Area

Shad making a big comeback in Delaware River

https://www.pressofatlanticcity.com/news/shad-make-a-big-comeback-in-delaware-river/article_bd20f7b6-9888-54ec-8930-8c476eec7013.html

There's good news for one of N.J.'s most endangered fish

Updated Oct 28, 2017; Posted Oct 28, 2017

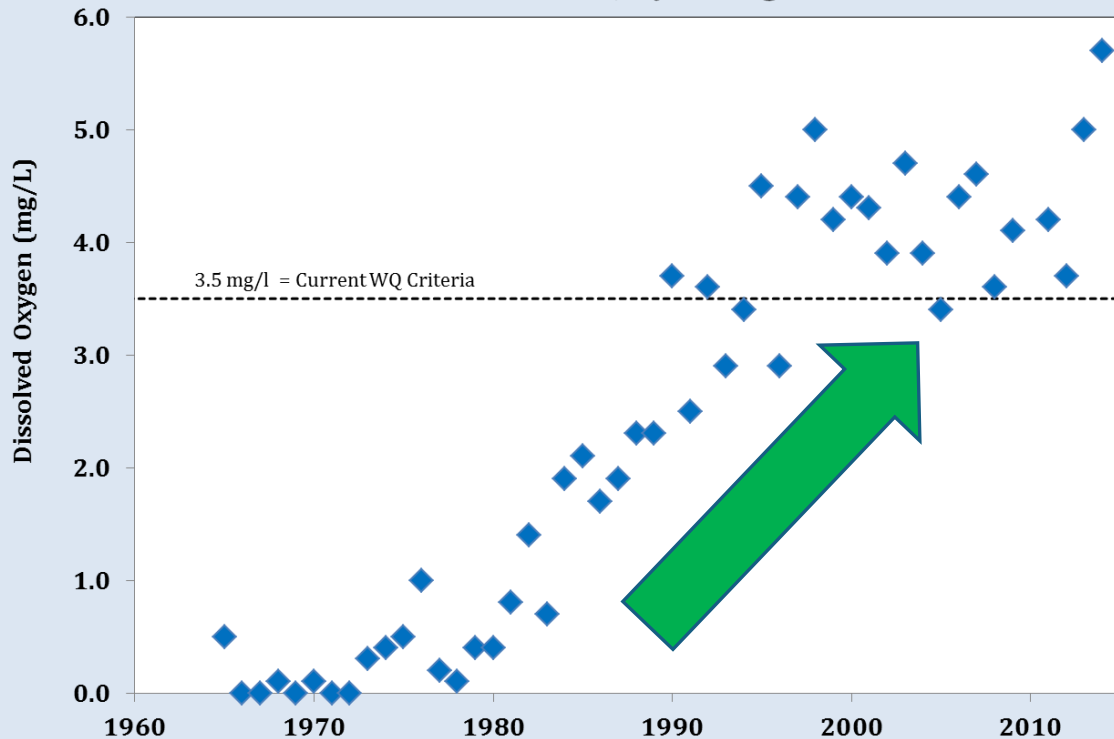
https://www.nj.com/news/2017/10/atlantic_sturgeon_still_depleted_but_slowly_recove.html



Photo: <https://urbanland.uli.org/development-business/camdens-comeback/>; Volley for Robert A. M. Stern Architects

DRBC Collaborative Results

**Delaware River Dissolved Oxygen
@ River Mile 100/ Ben Franklin Bridge
Minimum of all July Averages**



- **A dead river zone in the Estuary restored.**
- Significant improvement in Dissolved Oxygen.



<https://philly.curbed.com/maps/delaware-river-philadelphia-development-projects>

Stakeholder and Public Input, Outreach Expertise and Collaboration



- Science, engineering, planning and input through Advisory Committees on:
 - ✓ Water Quality
 - ✓ Water Management
 - ✓ Toxics
 - ✓ Monitoring
 - ✓ Regulated Flow
 - ✓ Floods
- Public input, engagement, partnership, and outreach

STATE OF THE BASIN 2019



DRBC
Delaware River Basin Commission
DELAWARE • NEW JERSEY
PENNSYLVANIA • NEW YORK
UNITED STATES OF AMERICA

**We will be requesting your input on
the State of the Basin in 2019.**

Collaborate to Meet Future Needs and Challenges

Climate Change

Nutrients **Water Efficiency**
Energy/Water Nexus

Stormwater

Swimmable Waters

Reservoir Storage

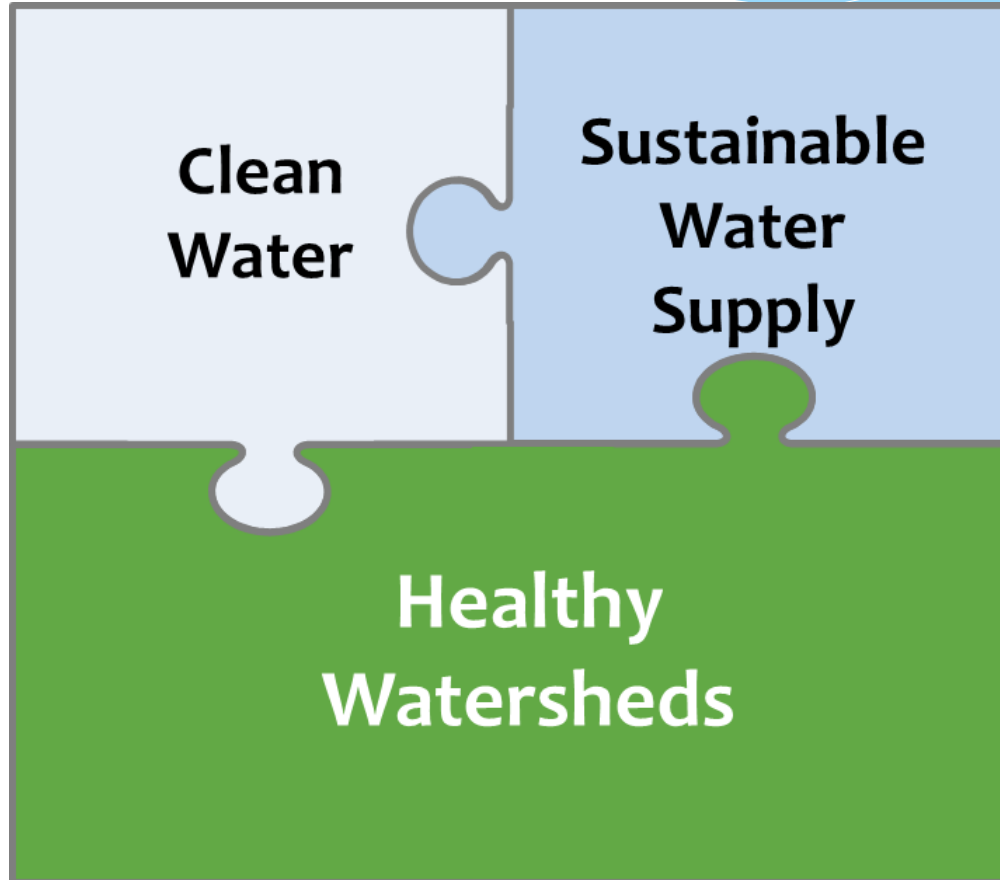
Sea Level Rise

Wetlands Loss

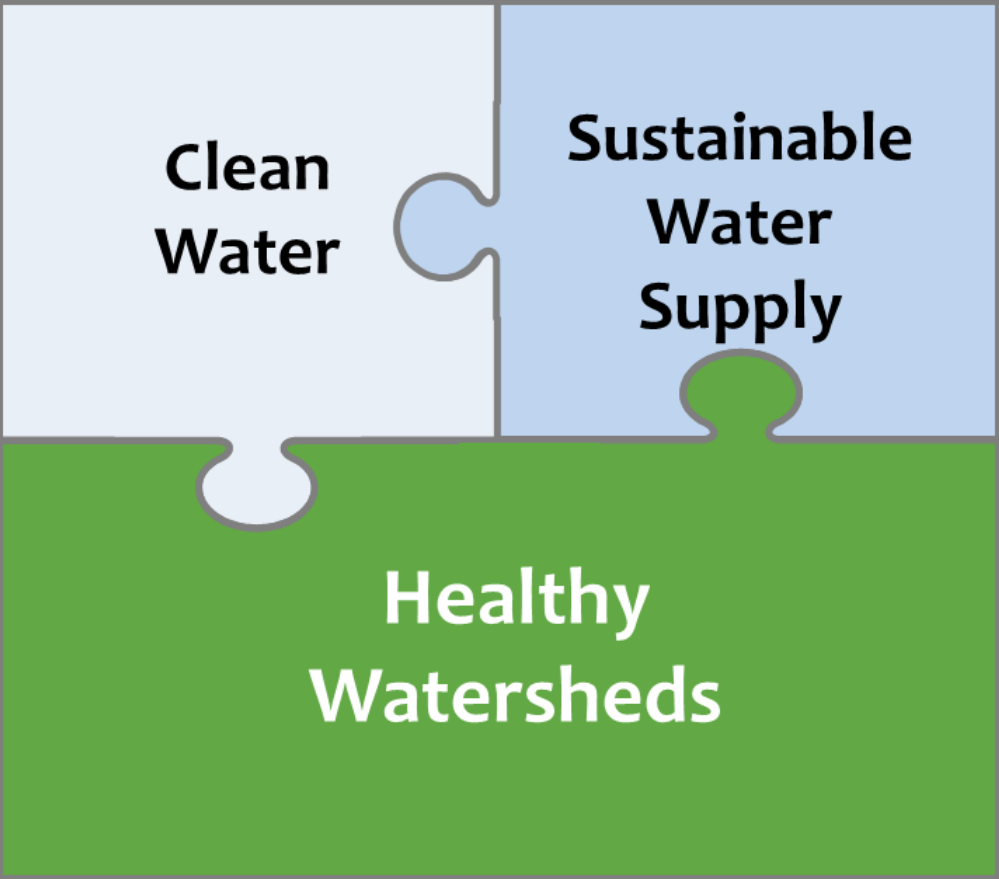
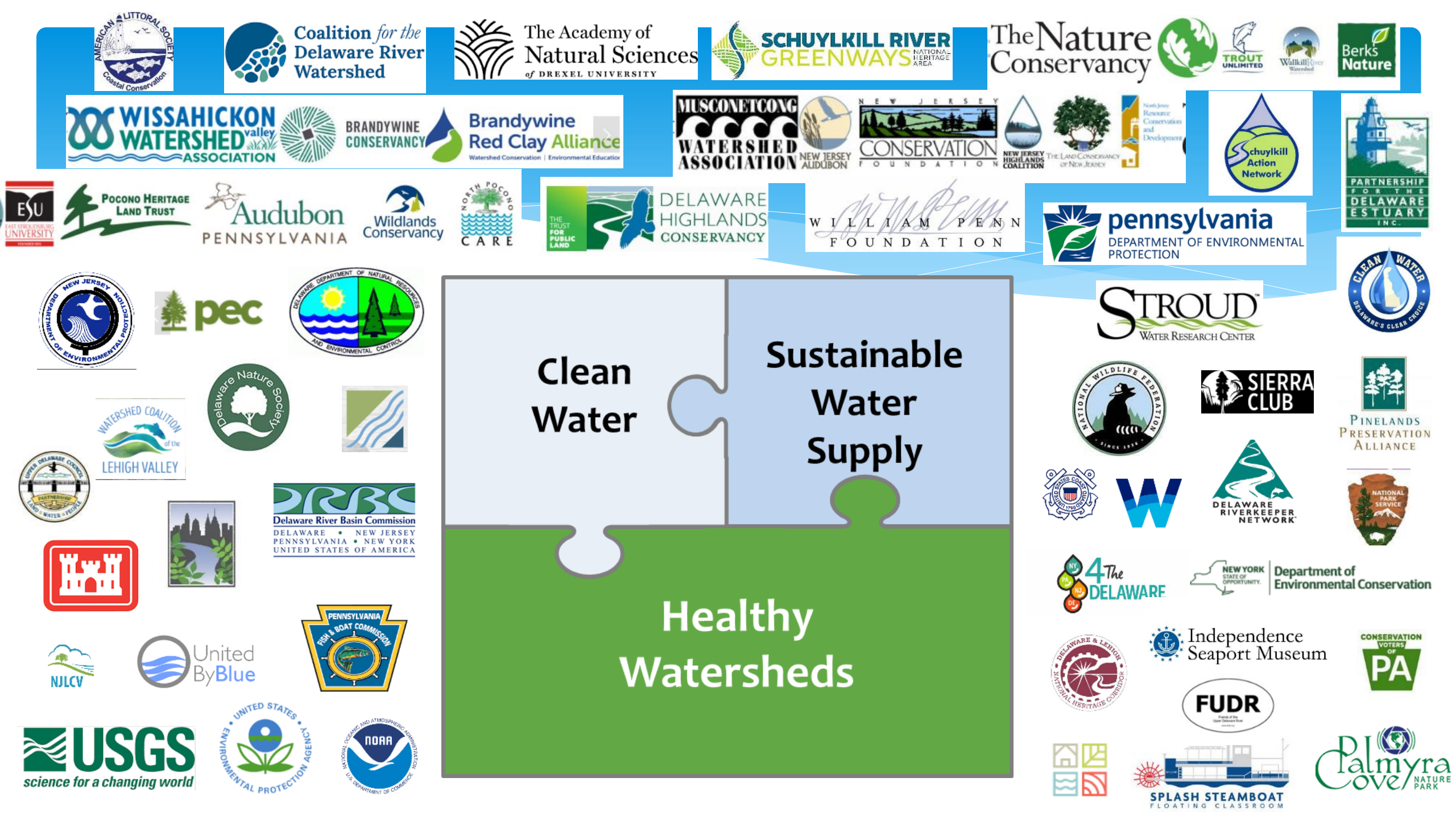
Living Shorelines **Floods**

Microplastics

Toxics Critical Habitat



Salinity Spill Response
Decree Parties
Public Access Road Salt
Forest Loss **Dam Removals**
Cold Water Fisheries
Environmental Justice
Emerging Contaminants
PFAS
Waterfront Development
Endangered Species



Clean Water

Sustainable Water Supply

Healthy Watersheds

Steve Tambini, Executive Director

Steve.Tambini@drbc.gov

www.drbc.gov



Delaware River Basin Commission

DELAWARE • NEW JERSEY
PENNSYLVANIA • NEW YORK
UNITED STATES OF AMERICA

***Managing, Protecting and
Improving the Basin's Water
Resources Since 1961***