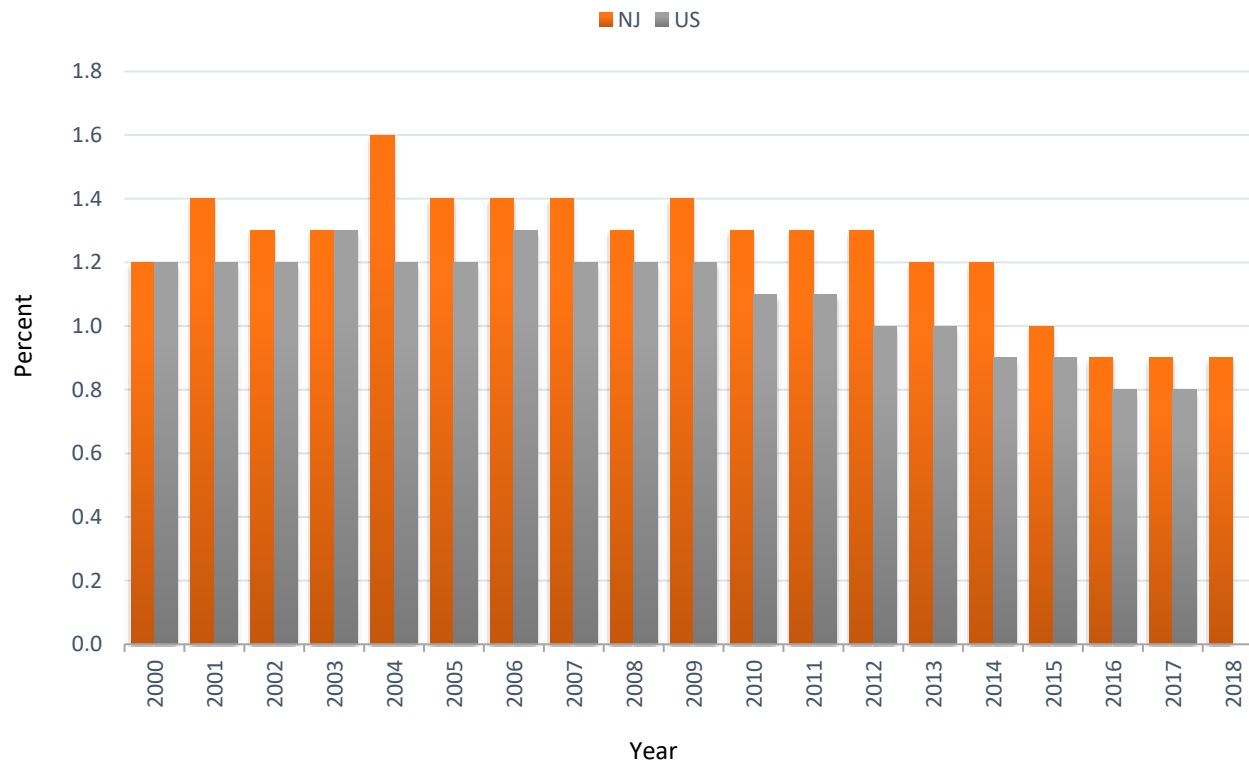


OHI #18: Occupational Safety and Health Administration (OSHA) Enforcement Activities

Percentage of OSHA Covered Establishments* Eligible for Inspection that were Inspected by OSHA, 2000-2018



*Excluding mines and farms and private household workers

Number and Percentage of OSHA Covered Establishments that are Eligible for Inspection, New Jersey and United States, 2000-2018

Year	Number		Percentage	
	NJ	US	NJ	US
2000	3,332	90,579	1.2	1.2
2001	3,582	87,881	1.4	1.2
2002	3,216	93,890	1.3	1.2
2003	3,494	99,153	1.3	1.3
2004	3,835	96,838	1.6	1.2
2005	3,813	96,238	1.4	1.2
2006	3,709	107,610	1.4	1.3
2007	3,800	104,010	1.4	1.2
2008	3,573	100,548	1.3	1.2
2009	3,635	100,245	1.4	1.2
2010	3,448	98,788	1.3	1.1
2011	3,460	93,231	1.3	1.1
2012	3,243	91,550	1.3	1.0
2013	3,165	88,239	1.2	1.0
2014	3,011	83,701	1.2	0.9
2015	2,670	79,281	1.0	0.9
2016	2,274	74,350	0.9	0.8
2017	2,355	74,795	0.9	0.8
2018	2,311	N/A	0.9	N/A

Excluding miners and farmers and private household workers

N/A: Not available

Data Source: OSHA annual reports of total inspections conducted, and the number of workers covered by these inspections; Bureau of Labor Statistics' data on Covered Employers and Wages (ES-202/QCEW) [<https://www.bls.gov/cew/data.htm>]

Technical Notes:

- The following states have no public sector OSHA coverage: Colorado, Florida, Georgia, Louisiana, Massachusetts, Missouri, Mississippi, Montana, Nebraska, New Hampshire, Texas, and Wisconsin.
- US numbers are for private sector only.
- Mines and private households are not covered (and thus not inspected) by OSHA.
- California and Michigan include smaller farms in their estimates.

Limitations:

- This indicator measures enforcement activity only. It does not measure other OSHA activities such as education and compliance assistance.
- OSHA may conduct multiple inspections of the same establishment during the calendar year. Thus, the percentage of establishments inspected, and the number of workers covered may be slightly overestimated.
- In federal OSHA states and some OSHA state plan states, OSHA does not inspect farms with 10 or fewer employees. Agricultural establishments are excluded from the denominator in this indicator except for a few states; therefore, the percentages of establishments and employees covered may be overestimated in states that do inspect smaller farms.
- Employers participating in an OSHA Voluntary Protection Program (VPP) or the Safety and Health Achievement and Recognition Program (SHARP) are exempt from routine inspections. Excluding workers from these programs will reduce the numerator, resulting in an underestimate of the protective function.