

The Work First New Jersey (WFNJ) program has an offer you just may not be able to refuse:

It's called Supplemental Work Support and it offers you another way to move toward independence. It's a cash stipend if you are working and close your case.

Have you been receiving cash assistance for at least six months?

Have you been working for at least 20 hours a week for at least four months?

Would you voluntarily close your WFNJ case and give up your cash assistance so you could get a \$200 per month stipend?

If you answered yes to all of these questions, this program is for you!

Consider the many advantages of this program:

\$200 a month!

Even with your job, things are still tight. How does \$200 a month for up to two years sound to you?

Your five-year time clock stops!

Once you close your WFNJ case, you save any time you have left from your five-year limit in case of a future emergency.

On the road to self-sufficiency!

You've been working at least 20 hours a week, and have been for the last four months. You already know what it takes to get a job, and



you've already adjusted your schedule so you can work. Now you can think about taking the next step to a full-time job. Consider how much more money you'll have to support your family AND still receive the \$200 stipend.

All your child support!

If you received child support while participating in WFNJ, the most you got was \$50 from the child support payments that were collected. Now, when you close your case, you will receive the entire child support payment. For more information, call the NJ Child Support Hotline toll-free at 1-877-NJKIDS1, or visit www.njchildsupport.org.

Just one more step!

All you have to do now is close your case and keep on working. Save those unused months of WFNJ assistance — just in case.

Here's why this program might be right for you:

While on welfare, you received cash assistance, health care benefits from Medicaid and help paying for child care, but you had to worry that you would reach your five-year limit and then have no time left.

Now, with Supplemental Work Support, you have a job (working at least 20 hours a week), health care benefits, help paying for child care, your entire child support payment, \$200 a month AND you are saving those unused months of WFNJ assistance!

Also, as soon as your cash assistance stops, your \$200 a month stipend begins, so there is no delay in money. The same holds true for child care and Medicaid coverage.



If this sounds too good to pass up — and it should — talk to your caseworker at the County Board of Social Services or Welfare Agency. Fill out the appropriate forms and you will have taken another step toward independence.

Here are some other programs that can help you along, once you close your case:

Medicaid/NJ FamilyCare

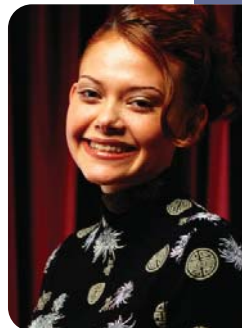
Your children may be able to get free or low-cost health insurance, based on family size and monthly income. The NJ FamilyCare program covers children under age 19 who have no insurance. Or, you may still be eligible for Medicaid benefits. For more information, call NJ FamilyCare toll-free at 1-800-701-0710 or call the Medicaid Hotline at 1-800-356-1561.

Transitional Child Care

You may be eligible for extended child care benefits for up to 24 months after you leave welfare. You will have to pay a part of the cost of child care. Call 1-800-332-9227 toll-free for more information.

Transportation

If you rely on public transportation, you may receive a one-time free monthly bus or train pass from NJ TRANSIT. You may also be eligible for an additional six months of bus or train passes at no cost or at half price.



Food Stamps

You may be able to receive Food Stamps to help pay for the food your family needs. For more information, call the toll-free Food Stamp

Information Line at 1-800-687-9512 or talk with your caseworker. You can also apply on line at www.njfoodstamps.com.



Low-Income Home Energy Assistance Program (LIHEAP)

If you need help to pay your heating bills or medically-necessary air conditioning, or even if your heat is included in your rent, you may be eligible for LIHEAP. Call toll-free 1-800-510-3102 for more information, or visit www.energyassistance.nj.gov.

Universal Service Fund (USF)

USF can lower the amount you pay for your natural gas and electric bills. Call toll-free 1-866-240-1347 for more information, or visit www.energyassistance.nj.gov.

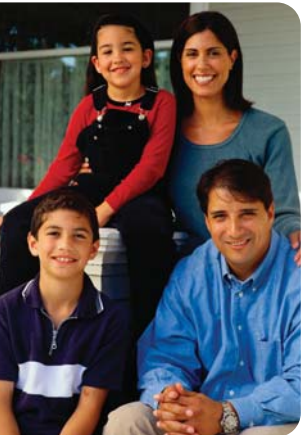
You can apply for LIHEAP and USF with one application.

NJ Earned Income Tax Credit (EITC)

NJEITC is a special tax benefit for low-income working people raising children. You may get money back even though you do not owe any state taxes. To get the credit, you must file a federal tax form and be eligible for the federal EITC, have an income of \$20,000 per year or less and you must file a state tax form. For

information on the state

EITC, call toll-free 1-888-895-9179 or call direct 609-588-2166. For information on the federal EITC, call the Internal Revenue Service (IRS) toll-free at 1-800-829-1040.



THE DIGNITY OF WORK; THE PRIDE OF INDEPENDENCE

New Jersey Department of Human Services
Jon S. Corzine, Governor

AN INCENTIVE TO INDEPENDENCE



THE DIGNITY OF WORK; THE PRIDE OF INDEPENDENCE