



An Online Tutorial for NIMS/ICS Virtual Campus Students

Press “Enter” or click on the slide to begin.



About This Program

- One of the critical lessons learned from the events of 9/11, is the pressing need for interoperability between all types of First Responders during a disaster or emergency response. This includes mental health responders.
- As such, Executive Orders from President Bush and Former Governor Codey have directed First Responders across the country, and around our state, to be trained in the National Incident Management System (NIMS) and Incident Command System (ICS) which are key components of our National Response Plan (NRP).



Training Alternatives

- To accommodate the training needs of New Jersey's disaster mental health responders, the required NIMS/ICS training programs are being offered in two formats:
 - Live, instructor-lead programs;
 - FEMA-sponsored online training programs.
- These training programs are also essential elements of New Jersey's disaster mental health credentialing initiative.





Required Courses

- The online programs are offered through the National Emergency Training Center (NETC), which is FEMA's training academy.
- Whether online or in the classroom, the two required courses are:
 - Introduction to the Incident Command System (ICS-100); and,
 - National Incident Management System (NIMS)-An Introduction (IS 700)
- You should take ICS 100 prior to IS 700
- Proof of successful completion of these two programs is required for credentialing and for on-scene disaster response.

Using this Tutorial



- This tutorial was developed to assist disaster mental health responders in navigating the FEMA National Emergency Training Center Virtual Campus in order to take the required NIMS/ICS training programs.
- The Virtual Campus can be a little tricky to get around, so it may be worth a few minutes of orientation before you get started.

A Few Important Points

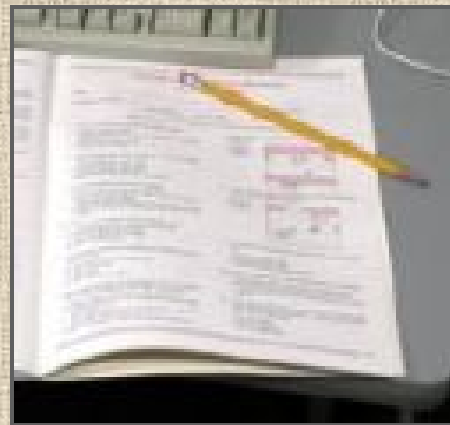
- If you have “pop-up blocker” software running on your computer it may prevent you from viewing some of the training materials. To avoid this problem, either:
 - Disable the blocker program;
 - Hold down the Control Key (Ctrl) on your keyboard while you click on each new link.

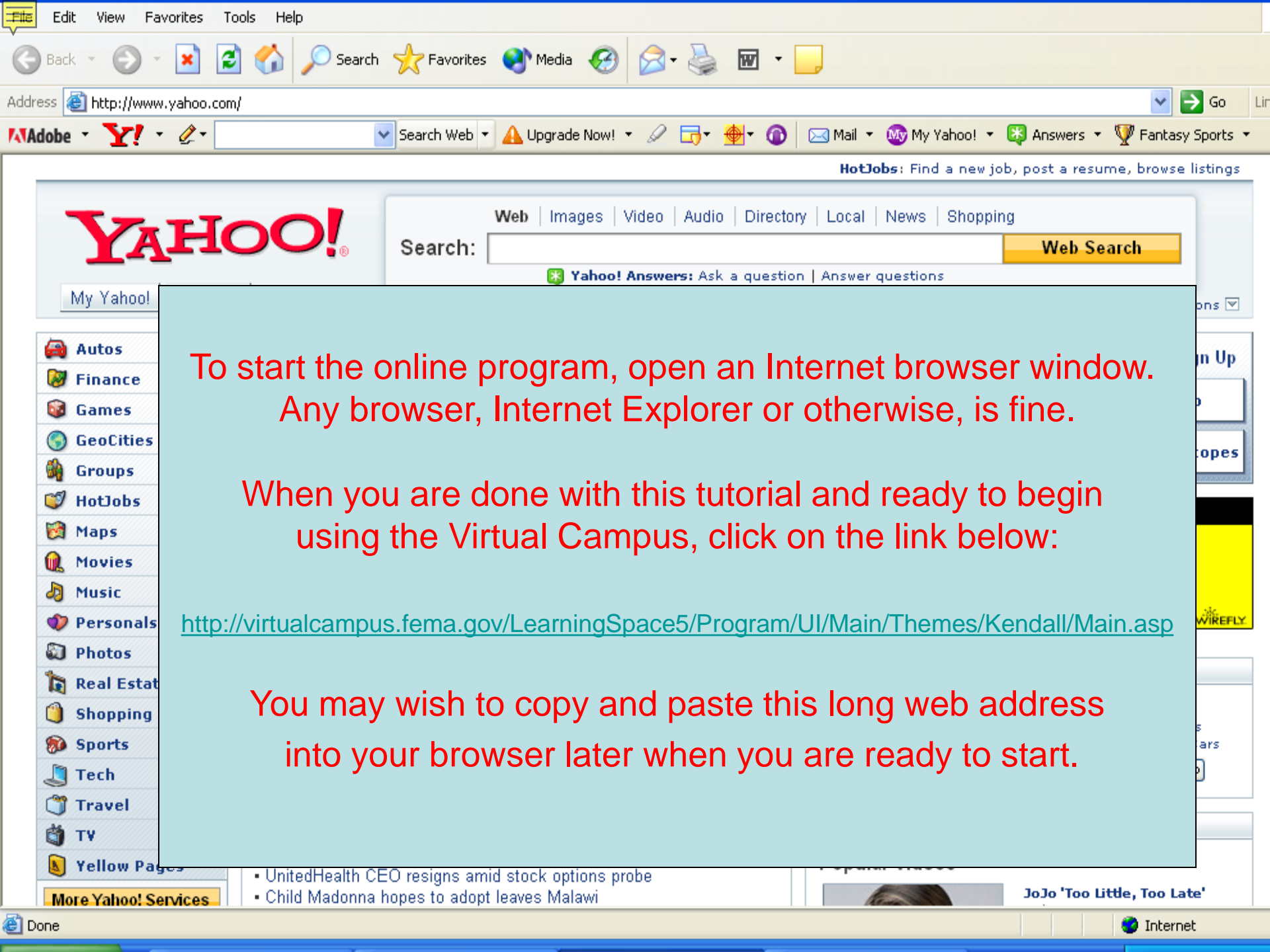




There Will Be a Test

- At the end of each course you will be required to take and pass a test before receiving credit and a certificate. You may wish to print out certain pages or take notes along the way to help you with the test.
- The post-test is 25 multiple choice questions.
- You must get 75% or better to pass the test.



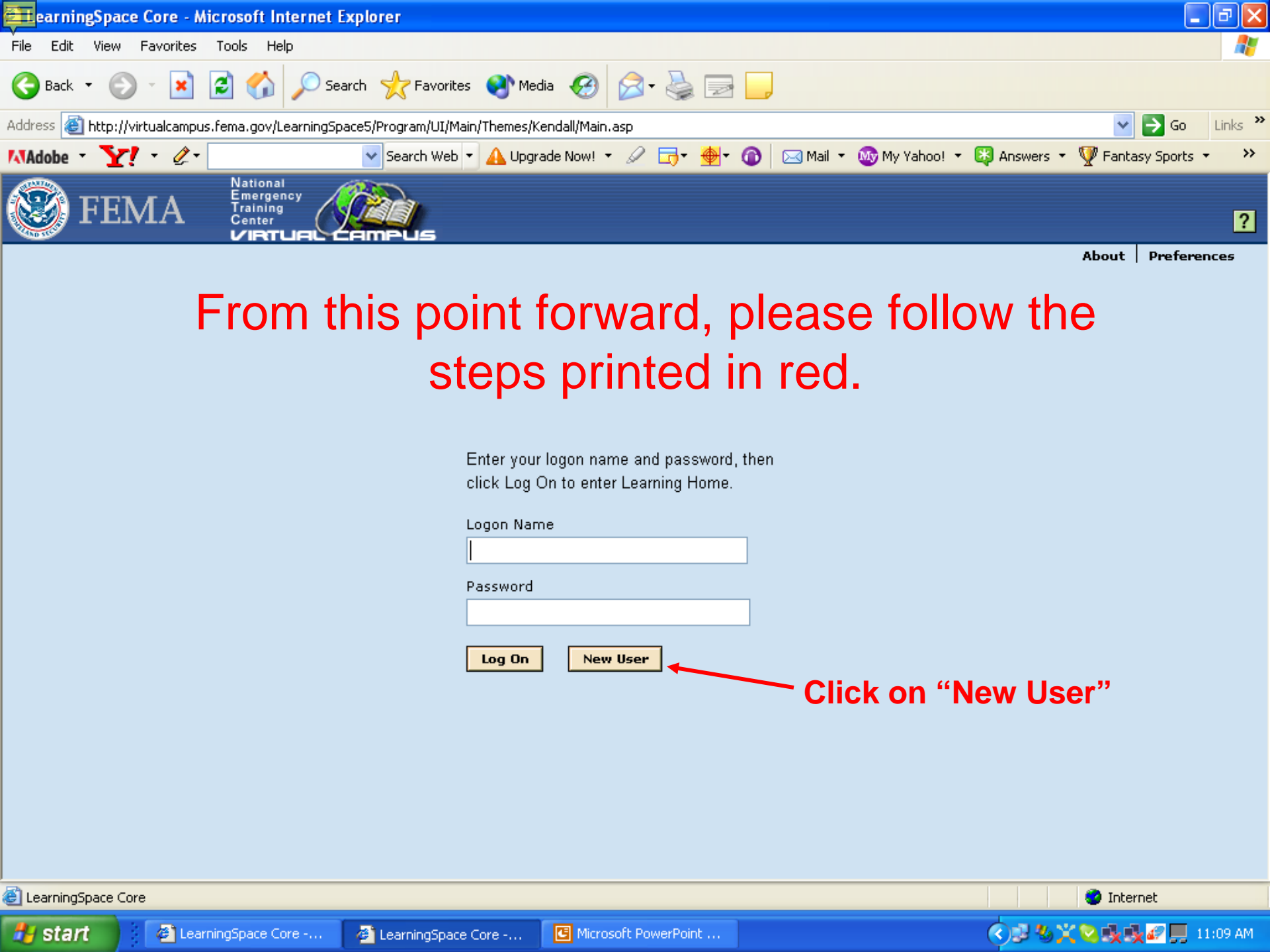


To start the online program, open an Internet browser window.
Any browser, Internet Explorer or otherwise, is fine.

When you are done with this tutorial and ready to begin
using the Virtual Campus, click on the link below:

<http://virtualcampus.fema.gov/LearningSpace5/Program/UI/Main/Themes/Kendall/Main.asp>

You may wish to copy and paste this long web address
into your browser later when you are ready to start.



From this point forward, please follow the steps printed in red.

Enter your logon name and password, then click Log On to enter Learning Home.

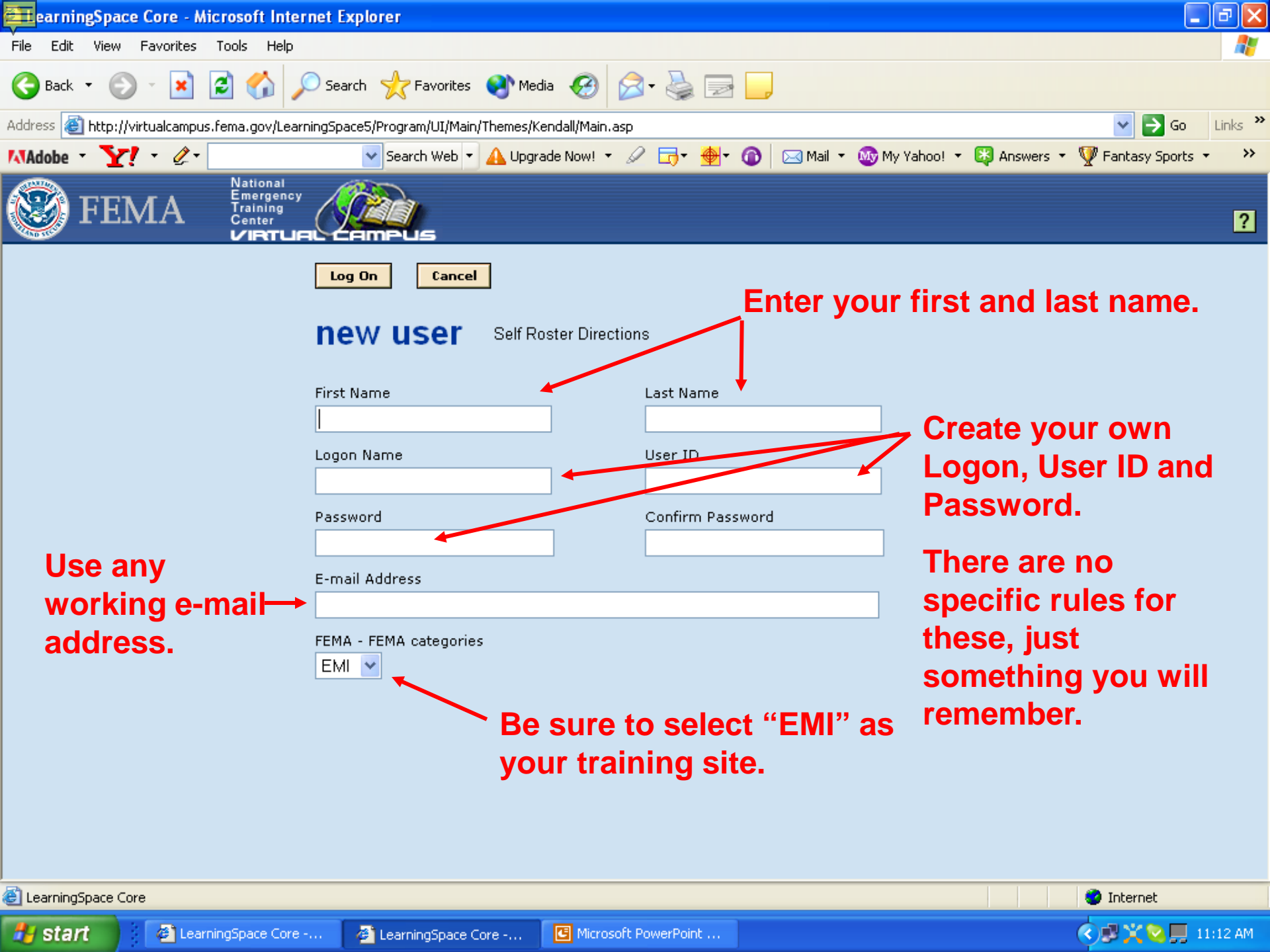
Logon Name

Password

Log On

New User

Click on "New User"



Enter your first and last name.

Create your own Logon, User ID and Password.

There are no specific rules for these, just something you will remember.

Use any working e-mail address.

Be sure to select "EMI" as your training site.

Log On Cancel

new user Self Roster Directions

First Name

Last Name

Logon Name

User ID

Password

Confirm Password

E-mail Address

FEMA - FEMA categories
EMI

- Student Tools**
- Welcome
- My Information**
- [Schedule List](#)
 - [Progress Reports](#)
 - [Change Password](#)
 - [Preferences](#)
- User Help**
- [Orientation](#)
 - [Help Contents](#)
 - [About](#)

Welcome to the NETC Virtual Campus Student Interface!

Please take the time to review the information available on this page prior to calling or emailing the help desk. It contains much of the information available at the help desk. You may also find the answers to your questions in the Virtual Campus help.

[Click here for an important Q Course special notice.](#)



Your browser is Microsoft Internet Explorer 6.0
JavaScript is Enabled

Note: Any program that blocks "pop-ups" needs to be turned off in order to use many of the courses on this site. We open new browser windows for several course features and a "pop-up" blocker will prohibit viewing these features.

- Important Information!**
- [Taking Courses](#)
 - [Test / Assessment Problems?](#)
 - [Frequently Asked Questions](#)
 - [Certificates of Completion for "Q" Courses](#)
 - [Certificates of Completion for "IS" Courses](#)
- Student Aids**
- [FEMA Form 75-5A](#)
 - [Adobe Acrobat Reader](#)
 - [Macromedia Flash Player](#)
 - [RealPlayer](#)
 - [Windows Media Player](#)
- Policies & Practices**
- [Accessibility Policy](#)
 - [Privacy Policy](#)
- Technical Tips & System Requirements**

You are now on the "Learning Home Page"

Click on "Course Catalog" to continue.

Course Finder

- By Course Name
- By Course Number**

Search Courses

 GO

- Advanced Search

Courses by Number

◀ Page 1 of 4 ▶

Click a course name to view the details page for that course. If self-enrollment is allowed, you may enroll in a course from the details page.

Course Number	Course Name	Description	Time Estimate (hh:mm)
IS10	Animals in Disaster, Module A: Awareness and Preparedness	This animal collaboration provides...	
IS100	Introduction to the Incident Command System (ICS-100)	If you have the necessary equipment...	
IS100.FW	Introduction to the Incident Command System, I-100, for Federal Disaster Workers	FEDERAL ASSETS ACCESS...	
IS100.LE	Introduction to the Incident Command System, I-100, for Law Enforcement	ICS introduction for law enforcement...	
IS100.PW	Introduction to the Incident Command System, I-100, for Public Works Personnel	FEDERAL ASSETS ACCESS... IS-100.PW – Introduction to Incident Command System for Public Works Personnel, ICS 100	

Once in the "Course Catalog", click on the "Course Finder", and "By Course Number"

Once on the appropriate page of the Course Catalog, Select "IS 100- Introduction to the Incident Command System (ICS 100)"- Not the specialized programs for other responders.

Course Finder

- By Course Name
- By Course Number**

Search Courses

[Advanced Search](#)

Course Details

[By Course Number](#) > **Introduction to the Incident Command System (ICS-100)**

Introduction to the Incident Command System (ICS-100)

Course Number: IS100

Description

If you have already completed IS 100 for Federal Disaster Workers or any equivalent ICS 100 course, you do NOT have to take this IS 100 course. You have already met your compliancy issue for ICS 100.

The Emergency Management Institute developed ICS 100, Introduction to ICS (IS-100) course, in collaboration with:

- National Wildfire Coordinating Group (NWCG)
- U.S. Department of Agriculture
- USFA's National Fire Programs Branch

IS-100 follows NIMS guidelines and meets the NIMS Baseline Training requirements for I-100.

Audience:

Anyone needing ICS 100, Introduction to ICS, can take this course. It uses examples from various disciplines.

NIMS Compliance:

This IS 100 course follows NIMS guidelines and meets the NIMS Baseline Training requirements for I-100.

Start a new course by clicking on "Enroll"

Course Finder

- By Course Name
- By Course Number**

Search Courses

- [Advanced Search](#)


Course Details

[By Course Number](#) > **Introduction to the Incident Command System (ICS-100)**

Introduction to the Incident Command System (ICS-100)

Course Number: IS100

Microsoft Internet Explorer

 You have successfully enrolled in this course.

Description

If you have already completed an equivalent ICS 100 course, you do NOT have to take this IS 100 course. You have already completed the Emergency Management Institute's (EMI) National Wildfire Coordinating Group (NWCG) U.S. Department of Agriculture (USDA) USFA's National Fire Programs Branch

IS-100 follows NIMS guidelines and meets the NIMS Baseline Training requirements for I-100.

Audience:

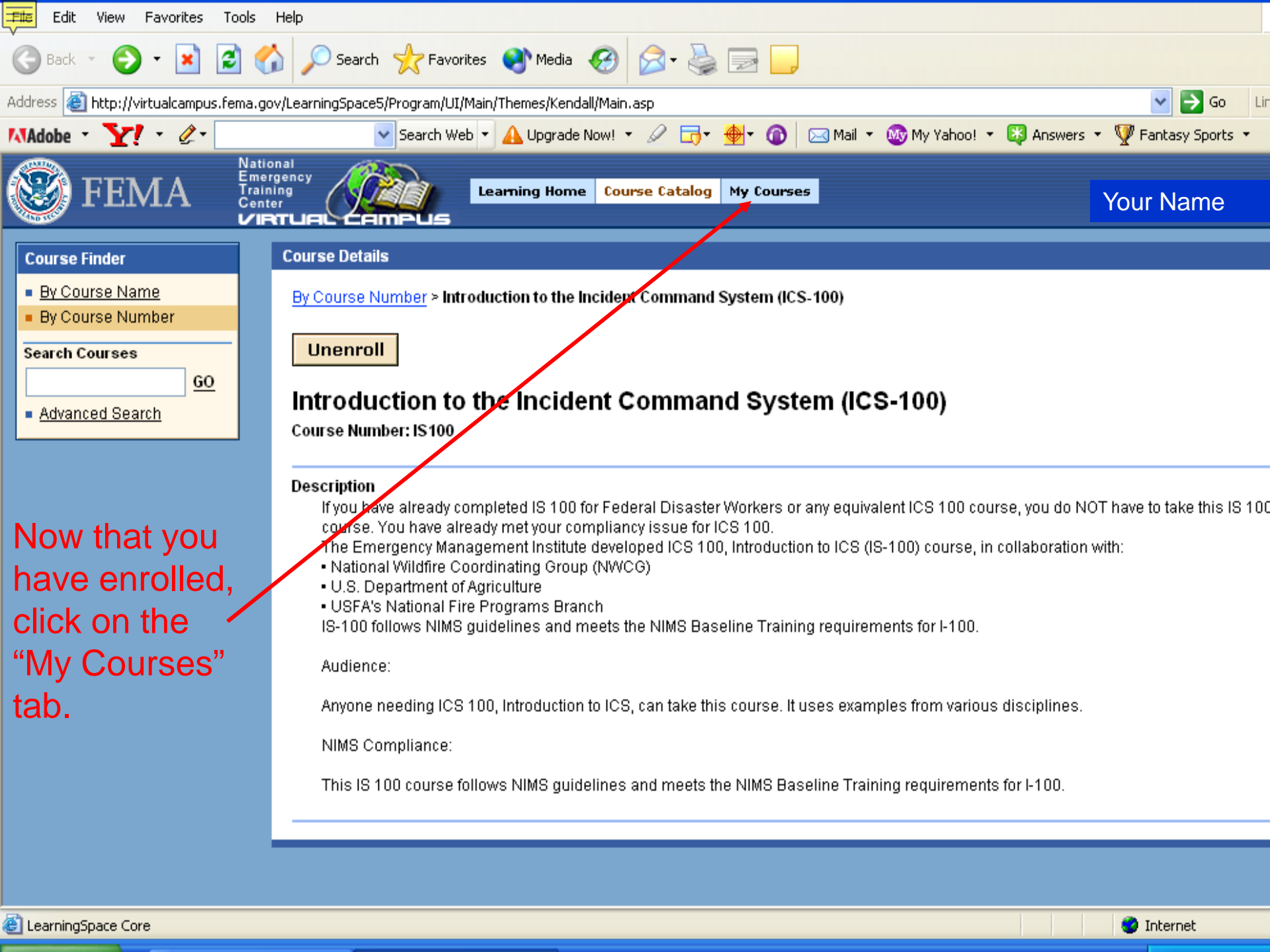
Anyone needing ICS 100, Introduction to ICS, can take this course. It uses examples from various disciplines.

NIMS Compliance:

This IS 100 course follows NIMS guidelines and meets the NIMS Baseline Training requirements for I-100.

You will receive a message confirming that you have successfully enrolled in the course.

Click "OK" to continue.



Course Finder

- By Course Name
- By Course Number

Search Courses

- Advanced Search

Course Details

[By Course Number](#) > **Introduction to the Incident Command System (ICS-100)**

Introduction to the Incident Command System (ICS-100)

Course Number: IS100

Description

If you have already completed IS 100 for Federal Disaster Workers or any equivalent ICS 100 course, you do NOT have to take this IS 100 course. You have already met your compliancy issue for ICS 100.

The Emergency Management Institute developed ICS 100, Introduction to ICS (IS-100) course, in collaboration with:

- National Wildfire Coordinating Group (NWCG)
- U.S. Department of Agriculture
- USFA's National Fire Programs Branch

IS-100 follows NIMS guidelines and meets the NIMS Baseline Training requirements for I-100.

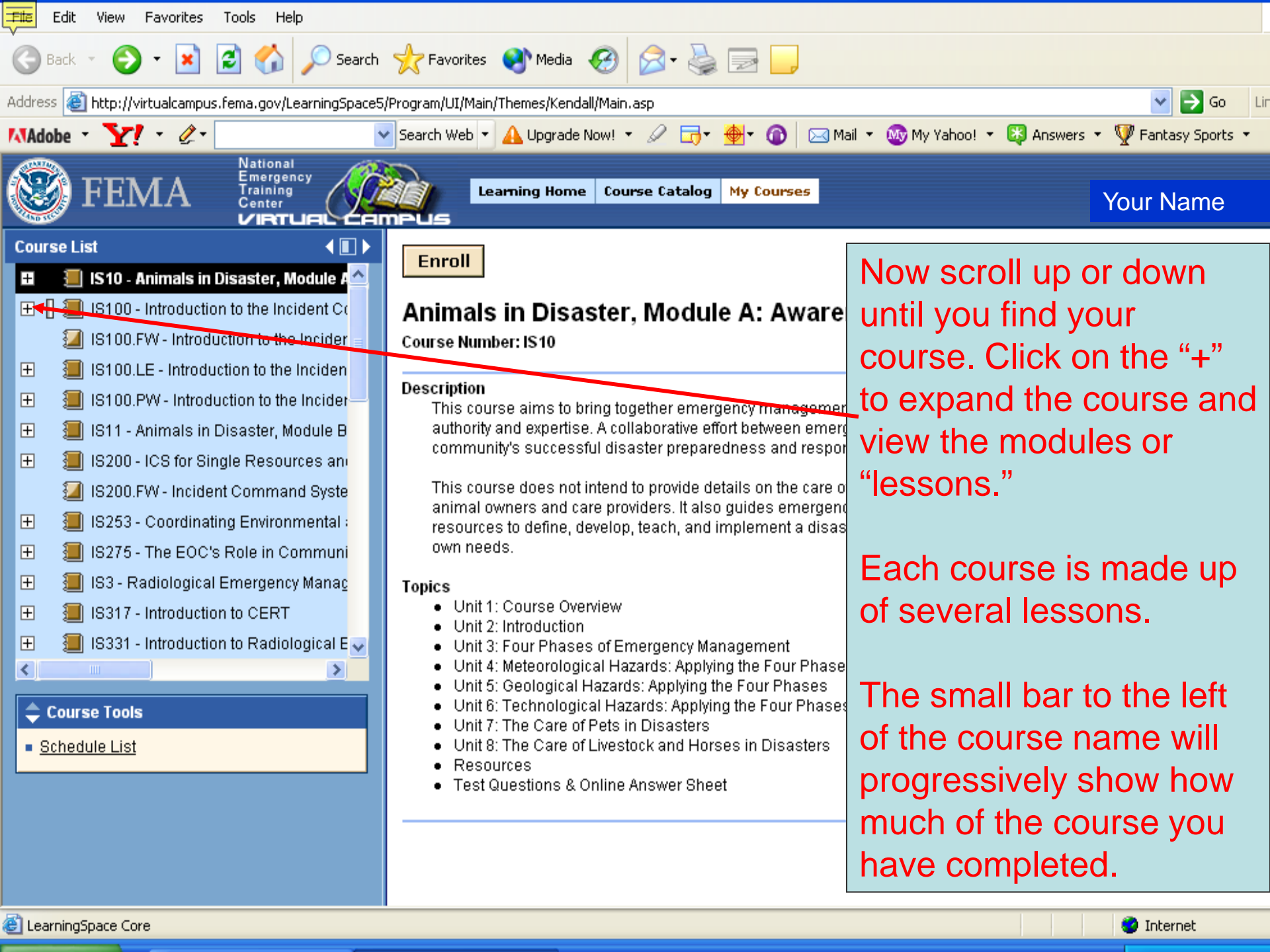
Audience:

Anyone needing ICS 100, Introduction to ICS, can take this course. It uses examples from various disciplines.

NIMS Compliance:

This IS 100 course follows NIMS guidelines and meets the NIMS Baseline Training requirements for I-100.

Now that you have enrolled, click on the "My Courses" tab.



Enroll

Animals in Disaster, Module A: Awareness

Course Number: IS10

Description

This course aims to bring together emergency management authority and expertise. A collaborative effort between emergency management and the community's successful disaster preparedness and response.

This course does not intend to provide details on the care of animals. It is intended to provide information on the care of animal owners and care providers. It also guides emergency resources to define, develop, teach, and implement a disaster plan for their own needs.

Topics

- Unit 1: Course Overview
- Unit 2: Introduction
- Unit 3: Four Phases of Emergency Management
- Unit 4: Meteorological Hazards: Applying the Four Phases
- Unit 5: Geological Hazards: Applying the Four Phases
- Unit 6: Technological Hazards: Applying the Four Phases
- Unit 7: The Care of Pets in Disasters
- Unit 8: The Care of Livestock and Horses in Disasters
- Resources
- Test Questions & Online Answer Sheet

Now scroll up or down until you find your course. Click on the "+" to expand the course and view the modules or "lessons."

Each course is made up of several lessons.

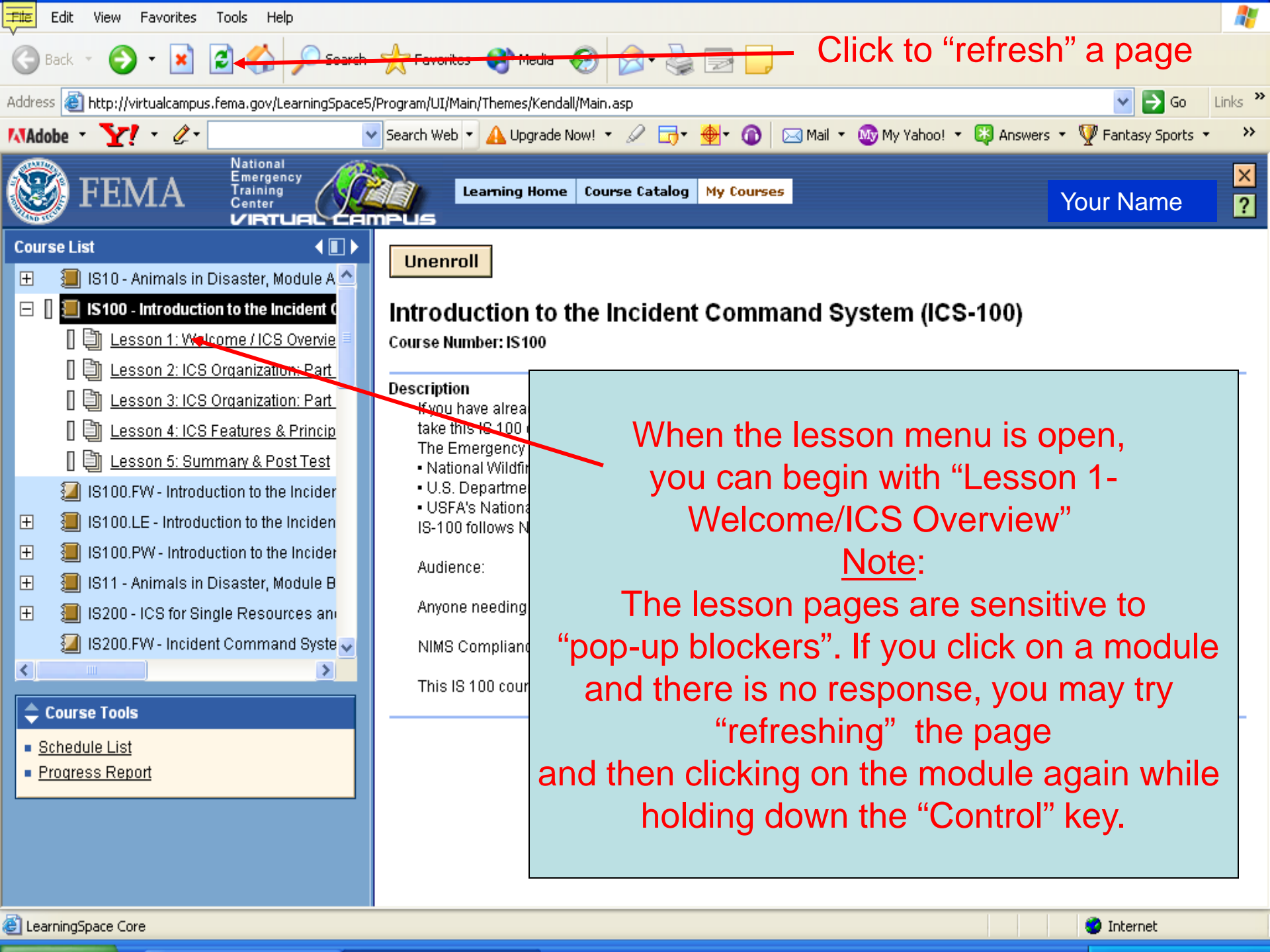
The small bar to the left of the course name will progressively show how much of the course you have completed.

Course List

- + IS10 - Animals in Disaster, Module A
- + IS100 - Introduction to the Incident Command System
- IS100.FW - Introduction to the Incident Command System
- IS100.LE - Introduction to the Incident Command System
- IS100.PW - Introduction to the Incident Command System
- + IS11 - Animals in Disaster, Module B
- + IS200 - ICS for Single Resources and Initial Incidents
- IS200.FW - Incident Command System
- + IS253 - Coordinating Environmental Response
- + IS275 - The EOC's Role in Community Emergency Response
- + IS3 - Radiological Emergency Management
- + IS317 - Introduction to CERT
- + IS331 - Introduction to Radiological Emergency Response

Course Tools

- Schedule List



Click to "refresh" a page

Unenroll

Introduction to the Incident Command System (ICS-100)

Course Number: IS100

Description

If you have already taken this IS 100 course, you do not need to take this course. The Emergency Management Institute (EMI) is a part of the U.S. Department of Homeland Security. USFA's National Incident Command System (ICS-100) follows NIMS.

Audience:

Anyone needing

NIMS Compliance

This IS 100 course

When the lesson menu is open, you can begin with "Lesson 1- Welcome/ICS Overview"

Note:

The lesson pages are sensitive to "pop-up blockers". If you click on a module and there is no response, you may try "refreshing" the page and then clicking on the module again while holding down the "Control" key.

Lesson 1: Welcome / ICS Overview

COURSE: IS-100 - Intro to Incident Command System (ICS 100)

LESSON 1: Welcome/ICS Overview

FEMA Emergency Management Institute

Glossary Accessibility Course Map Help

Progress

← BACK NEXT →

Course Welcome | ICS 100



FEMA



Click on the Next button now to proceed.

← BACK NEXT →

Once inside a lesson, you can navigate using the "Back" and "Next" keys.




Lesson 1: Welcome / ICS Overview

COURSE: IS-100 - Intro to Incident Command System (ICS 100)

FEMA Emergency Management Institute

LESSON 1: Welcome/ICS Overview

[Glossary](#) [Accessibility](#) [Course Map](#) [Help](#)Progress 

Receiving Credit and Course Length

[← BACK](#) [NEXT →](#)

To receive credit for this course, you must complete all of the lessons and pass the posttest. The last lesson provides instructions on how to complete the posttest.



Each lesson will take approximately 20 to 50 minutes to complete. It is important to allow enough time to complete each lesson in its entirety. The lesson overview states the approximate length of the lesson. The progress bar will be displayed in the upper right corner of each content screen to help you gauge your movement through the course. Rolling your mouse over the progress bar will tell you how many screens you've completed and the number of screens in the lesson.

Progress 

Remember . . . YOU MUST COMPLETE THE ENTIRE LESSON TO RECEIVE CREDIT. If you have to leave the lesson, do not exit from the course or close your browser. If you exit from the course, you will need to start that lesson over again.

Click on **Next** to continue.

[← BACK](#) [NEXT →](#)

The first several slides contain important instructions.

Please read them over.

Lesson 1: Welcome / ICS Overview

COURSE: IS-100 - Intro to Incident Command System (ICS 100)

LESSON 1: Welcome/ICS Overview

FEMA Emergency Management Institute

Glossary Accessibility Course Map Help

Progress

Lesson Completion

BACK NEXT

When you reach the end of a lesson, you will be instructed to click on the Course Map button. Clicking on this button is required to receive credit for the lesson. If you have not completed the lesson previously, you should not click on this button before reaching the final screen.

LESSON 1: Getting Started

FEMA Emergency Management Institute

IMPORTANT:

When you complete the lesson, you **MUST** click on the Course Map button.

- If you fail to click this button you will need to complete the entire lesson again!
- If you click on this button before arriving at the Congratulations screen, you will receive a warning message advising you that you have not yet completed the lesson.

Congratulat

You have co

the above C

ability Course Map Help

Progress

lesson, click on

Click on Next to continue.

BACK NEXT



Next

One of the most important actions is to click "Course Map" at the end of each lesson.

If you don't, you won't receive credit for completing that section.

Feedback

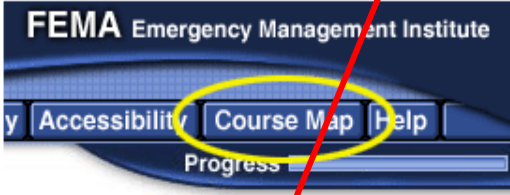
Print

Continue

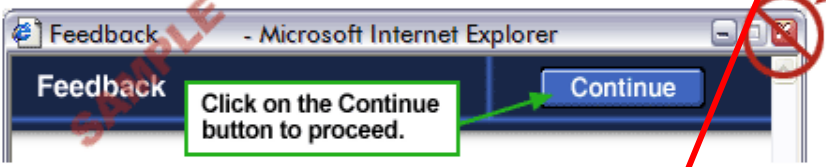


Review the feedback below. When you are ready to proceed, click on the Continue button.

The Course Map button is used to properly record lesson or lesson part completion when you are instructed to do so. If you have not completed the lesson or lesson part, you should NOT click on this button until you reach a screen instructing you to do so.



Do NOT click on the X in the upper-right corner!



Click on the Continue button to proceed.

Print

Continue

← BACK NEXT →

Sample Knowledge

Instructions: This statement below

Question 1 of 1

You should click on

- Determine the p
- Properly record
- Exit the lesson and receive credit even if you have not completed the entire lesson.

Complete the exercise to continue.



There are many “pop-quizzes” throughout the course, including one on how to use the Course Map function. When you have completed a quiz, click on “Continue”, not “Next” to advance.

Lesson 1: Welcome / ICS Overview

COURSE: IS-100 - Intro to Incident Command System (ICS 100)

FEMA Emergency Management Institute

LESSON 1: Welcome/ICS Overview

[Glossary](#) [Accessibility](#) [Course Map](#) [Help](#)Progress 

The Incident Command System (ICS)

[← BACK](#) [NEXT →](#)

Video Key Points:

An incident is an occurrence, either human caused or by natural phenomena, that requires response actions to prevent or minimize loss of life, or damage to property and/or the environment.

The Incident Command System, or ICS, is a standardized, on-scene, all-hazard incident management concept. ICS allows its users to adopt an integrated organizational structure to match the complexities and demands of single or multiple incidents without being hindered by jurisdictional boundaries.

[▶ View the Video](#)[▶ View the Transcript](#)[View the Video](#)

Click on the **View the Video** or **Transcript** buttons before proceeding.

[← BACK](#) [NEXT →](#)

FEMA

There are special features, such as video clips, sound clips and transcripts that help illustrate the learning points. These are not required, but they are helpful. You will need speakers or headphones to use these features.

Lesson 1: Welcome / ICS Overview

COURSE: IS-100 - Intro to Incident Command System (ICS 100)

FEMA Emergency Management Institute

LESSON 1: Welcome/ICS Overview

[Glossary](#) [Accessibility](#) [Course Map](#) [Help](#)Progress

Lesson Summary

[← BACK](#) [NEXT →](#)

You have completed the Welcome/ICS Overview lesson. This lesson addressed how:

- ICS is a standardized management tool that allows users to adopt a flexible, integrated organizational structure.
- ICS represents organizational "best practices," and has become the standard for emergency management.
- Designers of ICS recognized that it must be interdisciplinary and organizationally flexible.
- Applications of ICS have included planned events, natural disasters, and acts of terrorism.
- One of the key features of the National Incident Management System (NIMS) is the ICS.

The next lesson will provide an overview of the features and principles of ICS.



[Click on this link to access a printable version of this lesson.](#)

Click on Next to continue.

Lesson List

- Welcome / ICS Overview
- ICS Features & Principles
 - ICS Organization: Part I
 - ICS Organization: Part II
 - Summary

[← BACK](#) [NEXT →](#)

There is a summary at the end of each lesson.

Knowledge of the summary points is often helpful later when taking the test.

Lesson 1: Welcome / ICS Overview

COURSE: IS-100 - Intro to Incident Command System (ICS 100)

FEMA Emergency Management Institute

LESSON 1: Welcome/ICS Overview

Glossary Accessibility **Course Map** Help

Progress

Congratulations!

You have completed this lesson. To get credit for completing this lesson, click on the above Course Map button now.

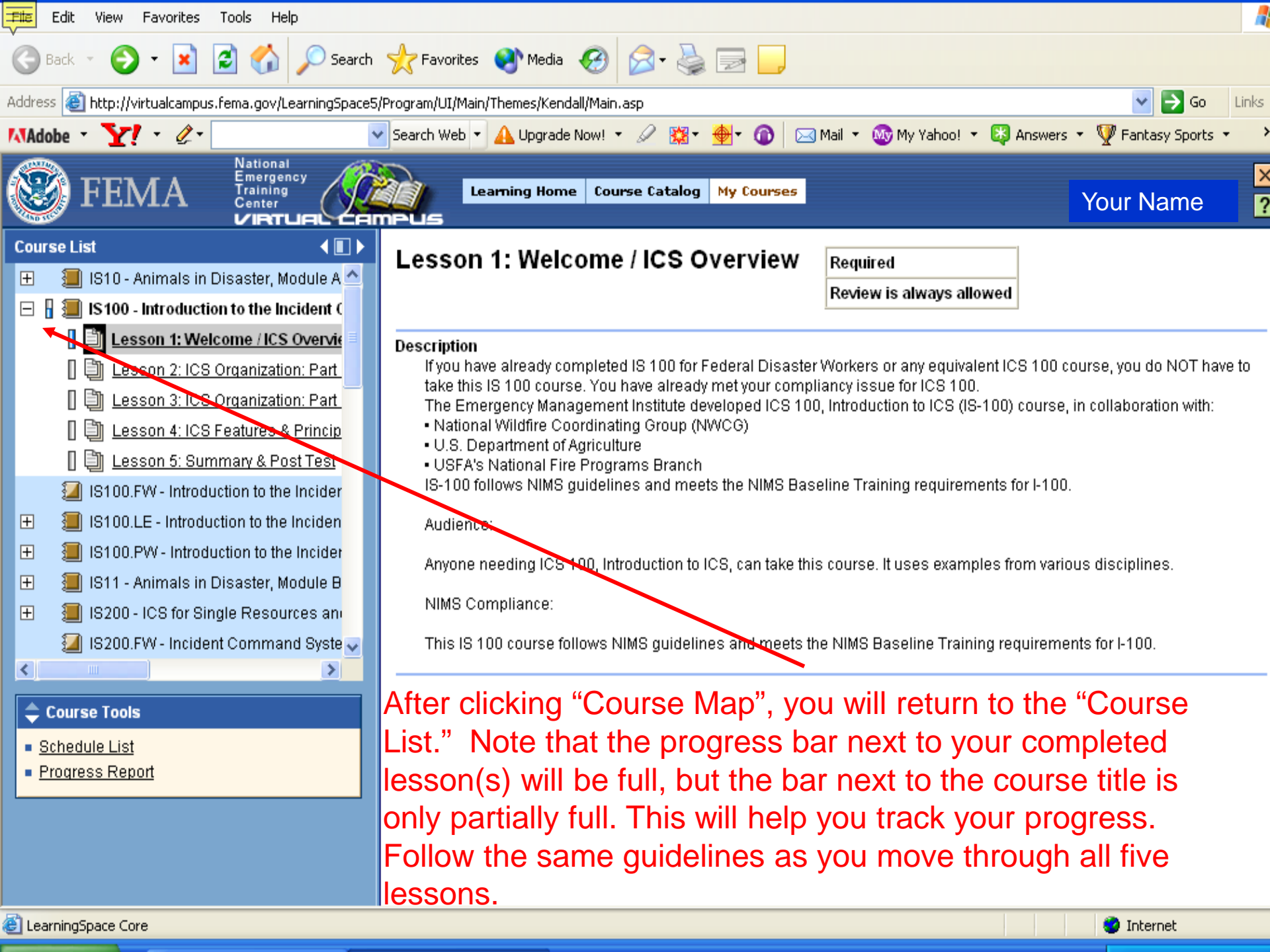
Remember, if you exit without clicking on the Course Map button, you will **not** receive credit for this lesson.

Click on the Course Map button to get credit for this lesson.



FEMA

Remember to click on "Course Map" at the end of each module to receive credit!



Lesson 1: Welcome / ICS Overview

Required
Review is always allowed

Description

If you have already completed IS 100 for Federal Disaster Workers or any equivalent ICS 100 course, you do NOT have to take this IS 100 course. You have already met your compliance issue for ICS 100.

The Emergency Management Institute developed ICS 100, Introduction to ICS (IS-100) course, in collaboration with:

- National Wildfire Coordinating Group (NWCG)
- U.S. Department of Agriculture
- USFA's National Fire Programs Branch

IS-100 follows NIMS guidelines and meets the NIMS Baseline Training requirements for I-100.

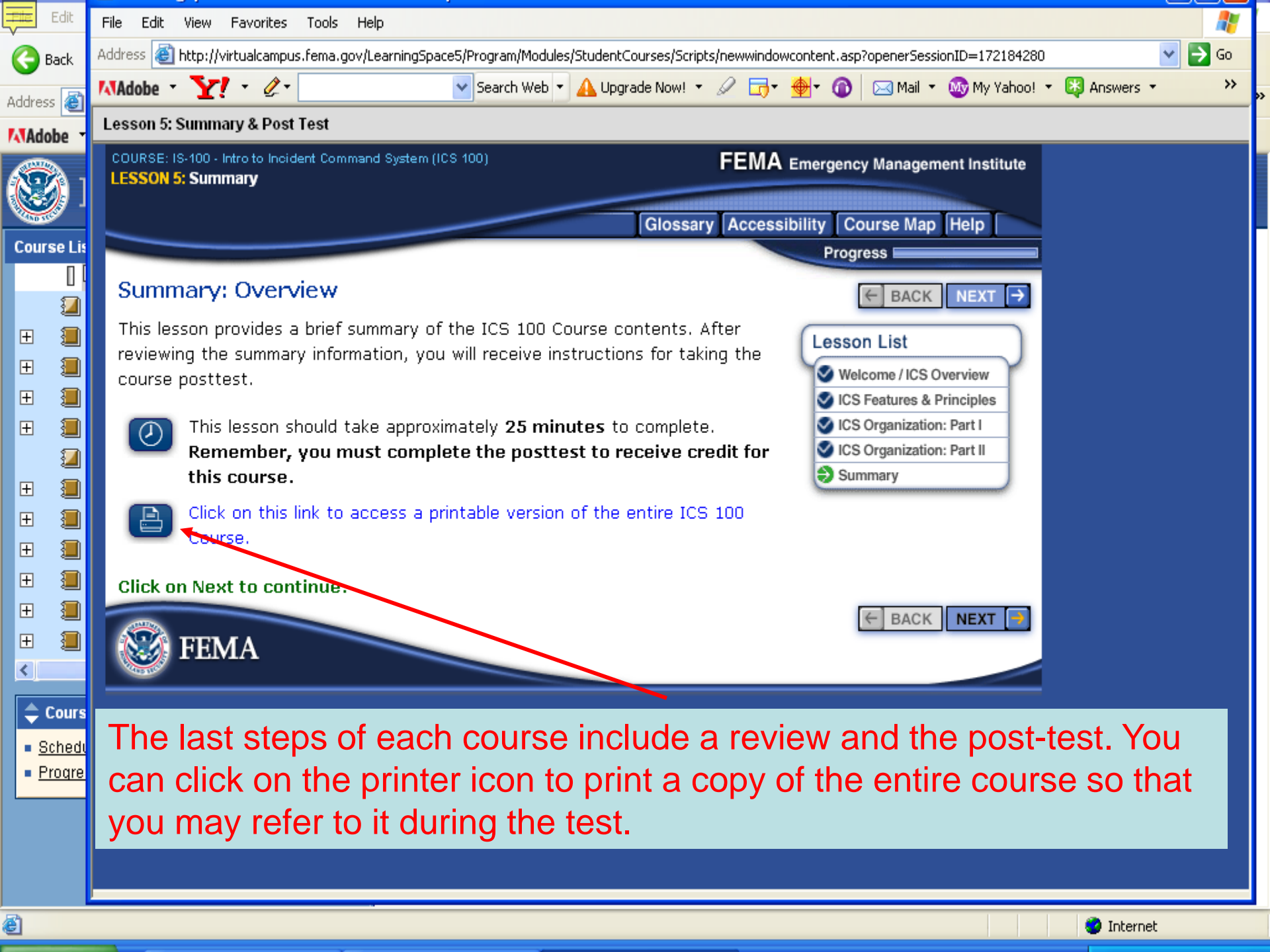
Audience:

Anyone needing ICS 100, Introduction to ICS, can take this course. It uses examples from various disciplines.

NIMS Compliance:

This IS 100 course follows NIMS guidelines and meets the NIMS Baseline Training requirements for I-100.

After clicking "Course Map", you will return to the "Course List." Note that the progress bar next to your completed lesson(s) will be full, but the bar next to the course title is only partially full. This will help you track your progress. Follow the same guidelines as you move through all five lessons.



Lesson 5: Summary & Post Test

COURSE: IS-100 - Intro to Incident Command System (ICS 100)

FEMA Emergency Management Institute

LESSON 5: Summary

Glossary Accessibility Course Map Help

Progress

Summary: Overview

← BACK NEXT →

This lesson provides a brief summary of the ICS 100 Course contents. After reviewing the summary information, you will receive instructions for taking the course posttest.

- #### Lesson List
- ✓ Welcome / ICS Overview
 - ✓ ICS Features & Principles
 - ✓ ICS Organization: Part I
 - ✓ ICS Organization: Part II
 - ➔ Summary



This lesson should take approximately **25 minutes** to complete. **Remember, you must complete the posttest to receive credit for this course.**



[Click on this link to access a printable version of the entire ICS 100 course.](#)

Click on Next to continue.

← BACK NEXT →



The last steps of each course include a review and the post-test. You can click on the printer icon to print a copy of the entire course so that you may refer to it during the test.

Lesson 5: Summary & Post Test

COURSE: IS-100 - Intro to Incident Command System (ICS 100)

LESSON 5: Summary

FEMA Emergency Management Institute

Glossary Accessibility Course Map Help

Progress

Taking the Posttest

You should now be ready to take the Intro to Incident Command System (ICS 100) posttest. The purpose of the test is to make sure that you have learned the course content. The posttest includes 25 multiple-choice items. To receive credit for this course, you must answer 75% of the questions correctly.

To take the course exam and receive a completion certificate for this course, you must:

- [Click here to download and print a copy of the final exam.](#)
- Circle your answers on the printed exam to save time when you go online.
- [Complete the online answer sheet.](#) This link will take you to the **secured** area of EMI's Independent Study Program. Please **DO NOT** copy this form as we can not accept copies of this form in our system. There is further information found on the form to explain our secured site.

← BACK NEXT →

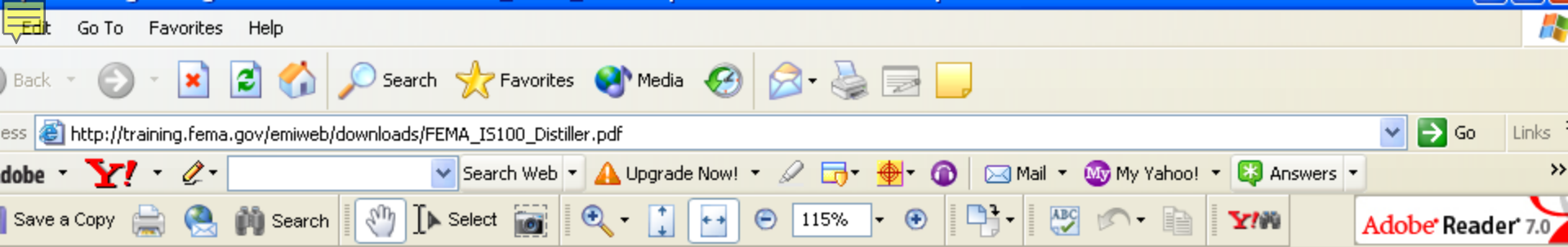


Click on Next to continue.

← BACK NEXT →



Many people have found it helpful to print a paper copy of the test and complete that before taking the test online. You must take that test online either way, but completing the test on paper first will save you time and effort when using the online form.



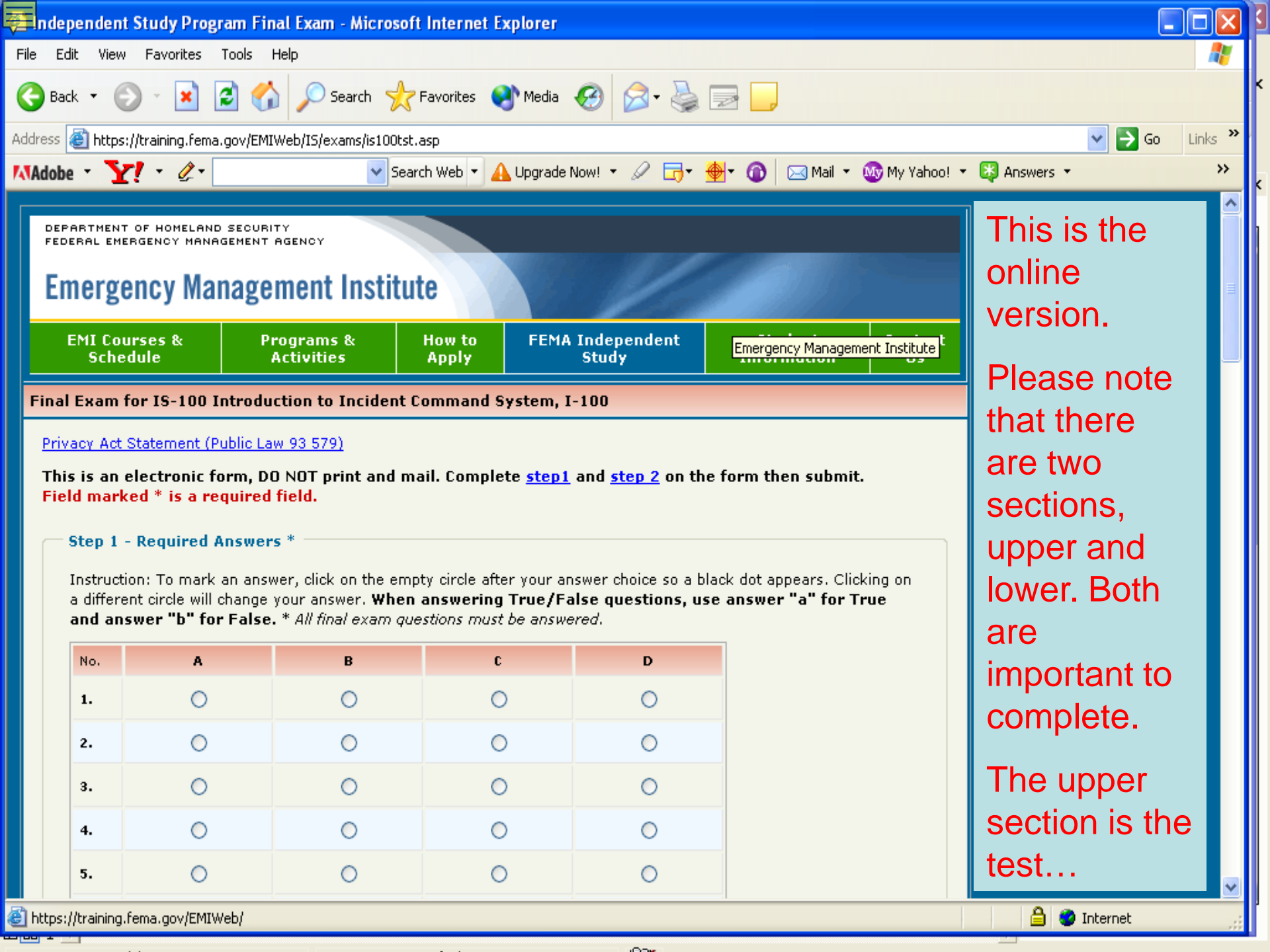
This is the paper copy of the test.

Final Examination - IS-100
Incident Command System (ICS)
(Total of 25 questions)

1. A basic ICS principle is that the first Incident Commander is responsible until the:
 - a. Five management functions are activated.
 - b. Next operational period has begun.
 - c. Event or incident has demobilized.
 - d. Authority is delegated to another person.

2. Expansion of incidents may require the delegation of authority for the





This is the online version.

Please note that there are two sections, upper and lower. Both are important to complete.

The upper section is the test...

DEPARTMENT OF HOMELAND SECURITY
FEDERAL EMERGENCY MANAGEMENT AGENCY

Emergency Management Institute

- EMI Courses & Schedule
- Programs & Activities
- How to Apply
- FEMA Independent Study
- Emergency Management Institute

Final Exam for IS-100 Introduction to Incident Command System, I-100

[Privacy Act Statement \(Public Law 93 579\)](#)

This is an electronic form, DO NOT print and mail. Complete [step 1](#) and [step 2](#) on the form then submit. Field marked * is a required field.

Step 1 - Required Answers *

Instruction: To mark an answer, click on the empty circle after your answer choice so a black dot appears. Clicking on a different circle will change your answer. **When answering True/False questions, use answer "a" for True and answer "b" for False.** * All final exam questions must be answered.

No.	A	B	C	D
1.	<input type="radio"/>	<input type="radio"/>	<input type="radio"/>	<input type="radio"/>
2.	<input type="radio"/>	<input type="radio"/>	<input type="radio"/>	<input type="radio"/>
3.	<input type="radio"/>	<input type="radio"/>	<input type="radio"/>	<input type="radio"/>
4.	<input type="radio"/>	<input type="radio"/>	<input type="radio"/>	<input type="radio"/>
5.	<input type="radio"/>	<input type="radio"/>	<input type="radio"/>	<input type="radio"/>

Step 2 - Required Student Information

Instruction: With mouse, point and click on data entry box. Use tab key to advance from box to box. Use mouse and scroll bar to move through the form.

* Social Security Number: Format is ###-##-####.

Please click on the [Transaction Security](#) link to see how we secure your information on this page.

* Re-enter your Social Security Number: Format is ###-##-####.

Please enter your LAST NAME in the field below. Incorrect entry will delay your certificate delivery.

* Last Name:

* First Name:

Middle Initial: (Jr., Sr., PhD., III, etc.):

* Email Address: Enter a valid email address.

* Re-enter Email Address:

* Mailing Address:

Bldg / Suite / Apartment (if needed):

* City: * State:

* Postal Zip Code: Format is ##### or #####-####.

Note: If you are unsure of the zip code plus four, please use [this link from the United States Postal Service](#) to find it or

...and the lower portion captures all of your personal information that will be used in your training records and on your certificate. Take your time and be sure your information is accurate.

File Edit View Favorites Tools Help

Back Forward Stop Home Search Favorites Media Refresh Print Mail Stop

Address <https://training.fema.gov/EMIWeb/IS/exams/is100tst.asp> Go Links

Adobe Y! Search Web Upgrade Now! Mail My Yahoo! Answers

* City: * State:

* Postal Zip Code: Format is ##### or #####-####.
Note: If you are unsure of the zip code plus four, please use [this link from the United States Postal Service](#) to find it or try this link from [National Association of Counties](#).

Select Business/Organization:

- L Local Government
- M Military (Branch)
- O Other
- P Private Sector
- S State Government

Work Telephone Number: () -


Home Telephone Number (optional): () -

* Course ID: IS-100 Introduction to Incident Command System, I-100

Clear Test Send

It is essential that you complete all requested information since it will be electronically transferred to the independent study database for processing. Please retain a copy of your answers, until you receive an email notice confirming a successful course completion--this will allow you to resubmit your exam in the event of submission errors or network problems. This is an electronic version of FEMA Form 95-23 which expires on September 30, 2005. The OMB Number is 3067-0277. Thank you.

This Web site can secure your private information using a VeriSign SSL Certificate. Information exchanged with any address beginning with https is encrypted using SSL before transmission.



Back to top

Done Internet

Scroll down to select "State Government" as the nature of your organization.

When you have completed all the required fields, click on "Send".



Your Confirmation

You will receive an e-mail confirming your successful completion of the program. **SAVE IT!!!** Print it and save it, and save it in your e-mail files as well.

DO NOT DELETE THIS EMAIL

Dear [YOUR NAME]:

Congratulations! You have successfully passed the Independent Study Course "IS-00700" entitled "National Incident Management System (NIMS) an Introduction".

Please retain this email for your records, as this is the only way to access your certificate. ***You will not receive a certificate in the mail.***

To access your certificate of completion, select the link below. If you cannot select the link, please copy and paste the link into your address line in your internet browser.

Adobe Reader is required to open the certificate. If you do not have this software, it can be obtained as a free download at <http://www.adobe.com>

Certificate of Completion link:

<http://emilms.fema.gov/ecert/cert/YOUR CERTIFICATE NUMBER/>

To print this certificate, select the "Print" icon on the PDF Menu displayed in the new PDF window. This icon looks like a little printer.

To save this certificate, select the "Save" icon on the PDF Menu displayed in the new PDF window. This icon looks like a floppy disk. When you select this icon, a dialog box will appear where you can specify the location on your computer to save the file as well as the file name.

If you have questions, please contact us at:

Independent Study Program Office
Emergency Management Institute
National Emergency Training Center
16825 S. Seton Ave
Emmitsburg, MD 21727

There is a link identified on your confirmation e-mail that will allow you to download a Certificate of Completion as a PDF. Save both the electronic version of your certificate and a printed copy.



Congratulations! You have successfully completed an important component of your overall professional development requirements as a disaster mental health responder!

Adobe Y! Search Web Upgrade Now! Mail My My Yahoo! Answers

Save a Copy Select 57% Adobe Reader 7.0

Emergency Management Institute



FEMA

This Certificate of Achievement is to acknowledge that

YOUR NAME

has reaffirmed a dedication to serve in times of crisis through continued professional development and completion of the independent study course:

IS-00700

**National Incident Management System
(NIMS) an Introduction**

Issued this 3rd Day of October, 2006


Richard Callis, Acting Superintendent

0.3 CEU

Please retaining a copy of your e-mail and certificate as proof that you have completed this program. Thank you for your continued commitment to New Jersey's Disaster Mental Health Response System!

Thank You!

- We hope that this online tutorial was helpful.
- The next slide contains several points of contact to assist you further if you have any difficulty using the FEMA-NETC Virtual Campus.



Online Resources

- Independent Study Course List:
<http://www.training.fema.gov/emiweb/is/crslist.asp>
- EMI Learning Center: <http://emilms.fema.gov/>
- Independent Study FAQs:
<http://www.training.fema.gov/EMIWeb/IS/ISFAQ.asp>
- Contact IS-DHS: Independent.Study@dhs.gov

Questions & Comments

Questions and comments about this tutorial can be directed to:

New Jersey Department of Human Services
Division of Mental Health Services
Disaster & Terrorism Branch

Tel: (609) 777-0728

or

E-mail: mhsttag@dhs.state.nj.us

On the Web at:

<http://www.disastermentalhealthnj.com>

Thank you!