



Partnering Session #3

I-295/I-76/Route 42 Direct Connection

January 7, 2004

Presented by: NJ Department of Transportation

***Visit us at:* www.state.nj.us/transportation/works/studies/rt295**



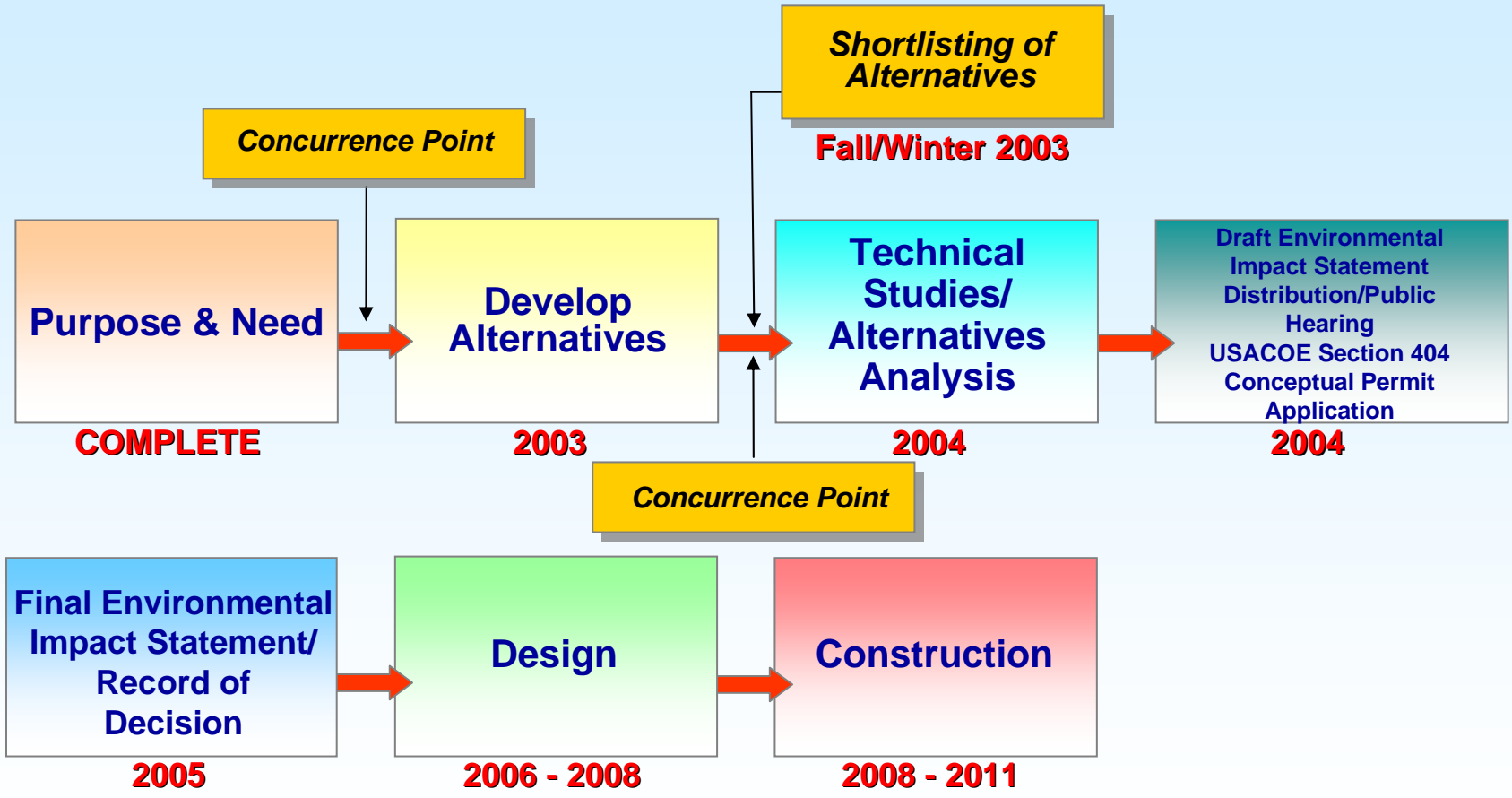


PROJECT OVERVIEW AND MEETING OBJECTIVE

Nick Caiazza, NJDOT



PROJECT MILESTONES





Meeting Objective

Develop "Final" Consensus On
The Short List Of Alternatives
To Be Studied In Detail In The
DEIS





I-295/I-76/Route 42
Direct Connection
Camden and Gloucester Counties

www.state.nj.us/transportation/works/studies/rt295

PURPOSE & NEED

- **Improve traffic safety**
 - 🕒 Accident rates – over 4 times the statewide average
- **Reduce congestion**
 - 🕒 Identified by NJDOT as one of the 10 most congested locations in NJ
- **Meet driver's expectations**
 - 🕒 No direct connection for I-295 thru-traffic



I-295/I-76/Route 42 Direct Connection

Camden and Gloucester Counties

www.state.nj.us/transportation/works/studies/rt295

ALTERNATIVES

- **26 alternatives were developed to provide a direct connection for I-295 through traffic. Features common to all are:**
 - 👁️ **3 lanes on NB & SB I-295**
 - 👁️ **Full right and left shoulders**
 - 👁️ **2 lane ramps**
 - 👁️ **I-76/Route 42 express/local configuration removed**
 - 👁️ **I-295 speed limit: 55 MPH**
 - 👁️ **Ramps speed limit: 40 MPH**



**I-295/I-76/Route 42
Direct Connection**
Camden and Gloucester Counties

CONSTRAINTS



LEGEND

- Wetlands (Approx.)
- Existing Resources
- ▬ Existing Roads & Shoulders
- ▬ Existing Structures
(Bridges, Retaining Walls, Noise Walls)





ALTERNATIVE SCREENING PROCESS- SHORTLISTED ALTERNATIVES AND RATIONALE

Ileana Ivanciu, Dewberry



Overview

- Review Screening Process
- Present Overview of Recommendations by Each Stakeholder Group
- Discuss Rationale
- Next Steps





Alternatives Screening

OBJECTIVE - Select a shortlist of feasible alternatives that satisfy the project purpose and need with minimal impacts to the natural and built environment to be studied through the EIS process





SELECTION CRITERIA

- **Constructibility**
- **Maintainability**
- **Compliance with Standard Design Criteria**
- **Comparison of Order of Magnitude Construction Cost**
- **Right-of-way Acquisition**
- **Wetlands Preservation**
- **Noise**
- **Air Quality**
- **Socioeconomic Conditions**
- **Environmental Justice**
- **Archaeological Resources**
- **Historic Resources**
- **Potential Hazardous/Contaminated Sites**



Alternatives Screening Process

- Informed qualitative decision-making approach
- Iterative
- Consensus amongst stakeholders
 - ☯ Project team members
 - ☯ DOT core group
 - ☯ LOB, CAC, ACM
 - ☯ Impacted Communities
 - ☯ Traveling motorists



Alternatives Screening Process

- Multidisciplinary Project Team
 - 👁 Engineers
 - 👁 Planners
 - 👁 Scientists
- Preliminary impact assessment by alternative
 - with respect to all screening criteria
- Two-day workshop
 - 👁 Fill out matrix
 - 👁 Integrate scores vertically by alternative
 - 👁 Compare alternatives
 - 👁 Recommend shortlist for further study



Alternatives Screening Process

- Subsequent Workshops
 - ☯ NJDOT Core Group
 - ☯ ACM
 - ☯ CAC

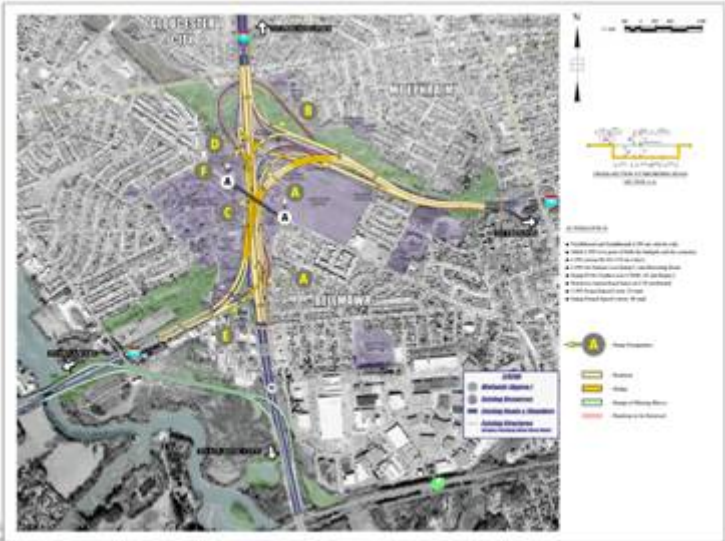
- Local Officials Briefing
- Partnering Session
- PIC (January 28, 2004)



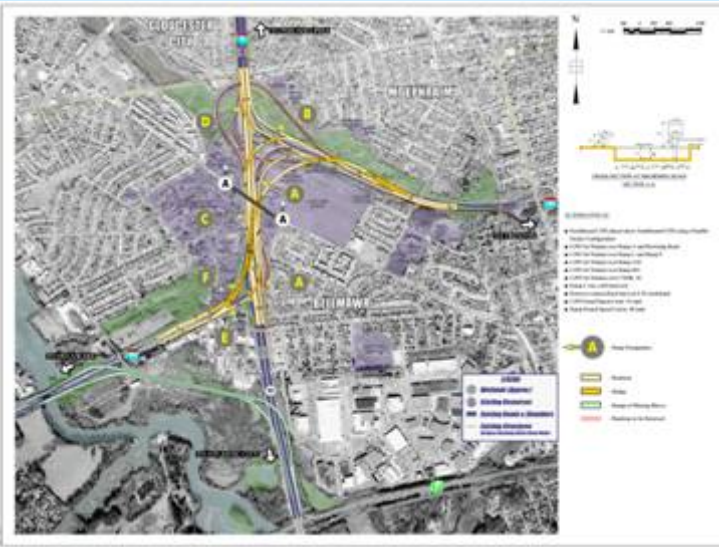
I-295/I-76/Route 42 Direct Connection

Camden and Gloucester Counties

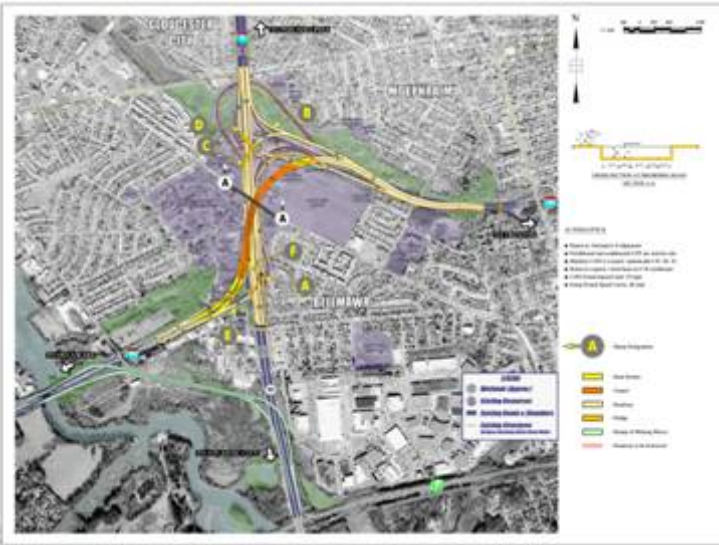
Recommended Alternatives Project Team



Alternative D



Alternative G2



Alternative K



I-295/I-76/Route 42 Direct Connection

Camden and Gloucester Counties

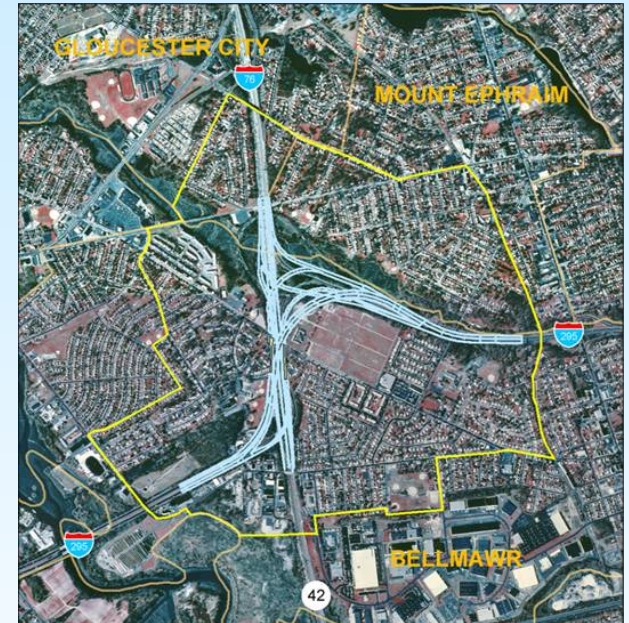
Alternative D



Potential Residential and Commercial
ROW Impacts
Total Residences Impacted - 22
Total Businesses Impacted - 8



Potential Community and Recreational
ROW Impacts
No Cemetery Plots Impacted
1 Park Impacted
Moderate School Impacts



Low Potential Socioeconomic Impacts



I-295/I-76/Route 42 Direct Connection Camden and Gloucester Counties



Potential Wetlands Impacts – 8 Acres



Potential Floodplain Impacts – 6 Acres



**I-295/I-76/Route 42
Direct Connection**
Camden and Gloucester Counties

Alternative G2



Potential Residential and Commercial ROW Impacts
 Total Residences Impacted - 22
 Total Businesses Impacted - 10



Potential Community and Recreational ROW Impacts
 No Cemetery Plots Impacted
 1 Park Impacted
 Low School Impacts



Potential Socioeconomic Impacts
 Low Socioeconomic Impacts



I-295/I-76/Route 42 Direct Connection Camden and Gloucester Counties



Potential Wetlands Impacts – 9 Acres



Potential Floodplain Impacts – 7 Acres



**I-295/I-76/Route 42
Direct Connection**
Camden and Gloucester Counties

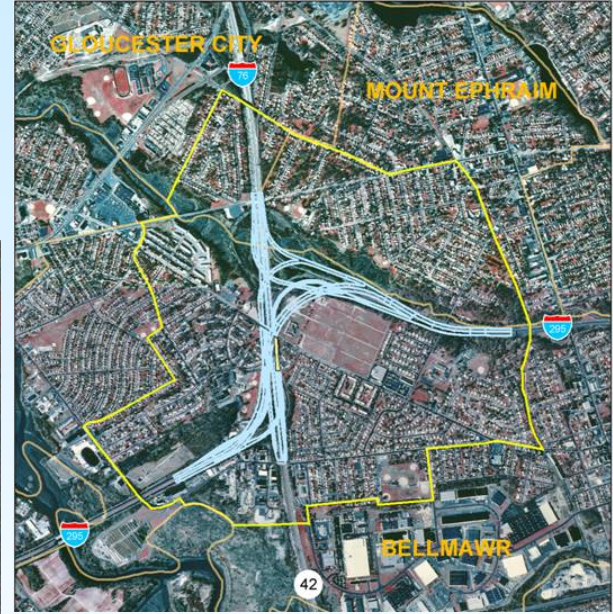
Alternative K



Potential Residential and Commercial ROW Impacts
 Total Residences Impacted - 30
 Total Businesses Impacted - 10



Potential Community and Recreational ROW Impacts
 No Cemetery Plots Impacted
 1 Park Impacted
 Moderate Schools Impacted



Low Potential Socioeconomic Impacts



I-295/I-76/Route 42 Direct Connection Camden and Gloucester Counties



Potential Wetlands Impacts- 12 Acres

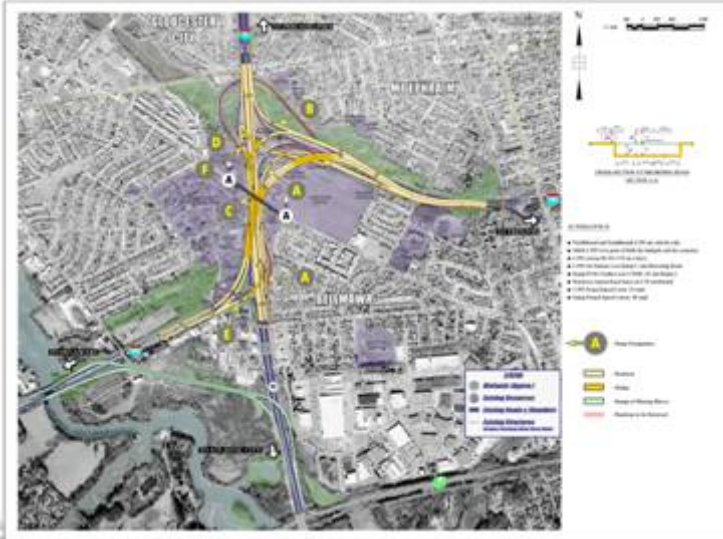


Potential Floodplain Impacts- 9.5 Acres

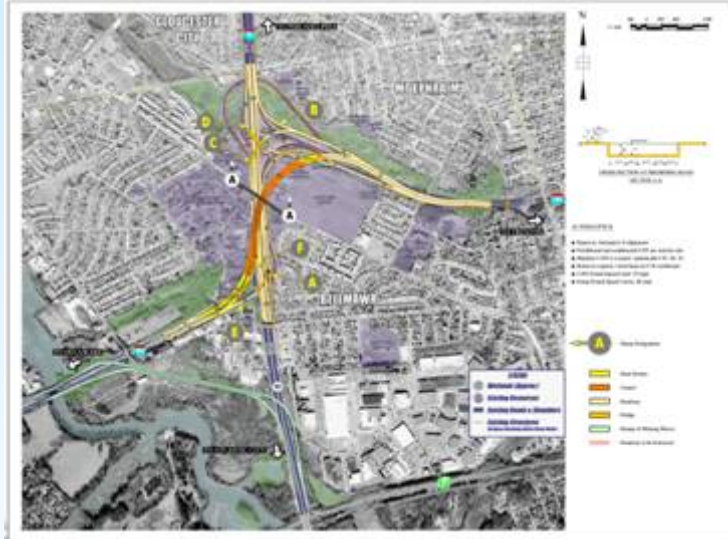


**I-295/I-76/Route 42
Direct Connection**
Camden and Gloucester Counties

**Recommended Alternatives
NJDOT Core Group Meeting**



Alternative D



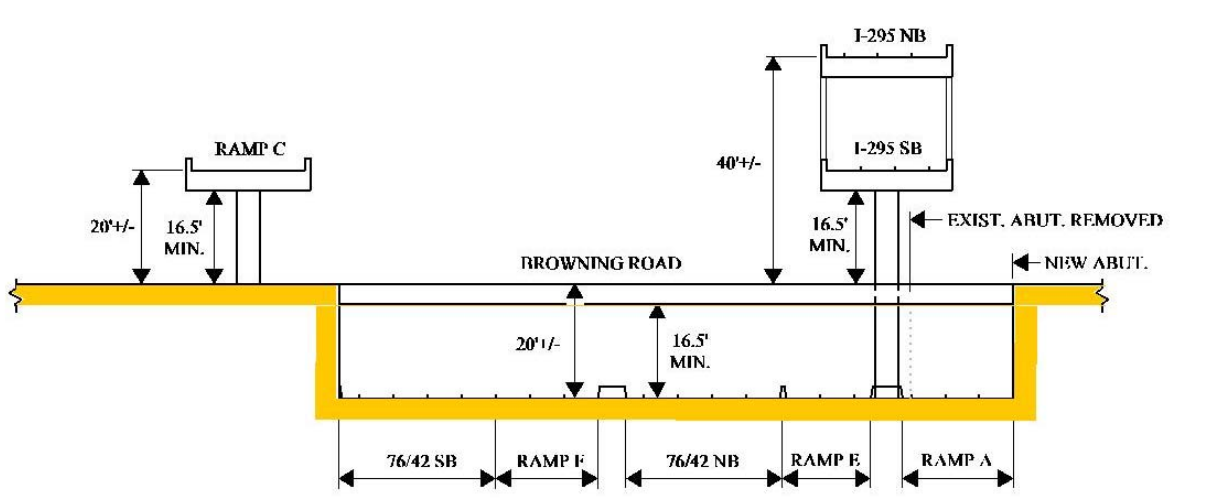
Alternative K



I-295/I-76/Route 42 Direct Connection

Camden and Gloucester Counties

NJDOT Core Group Meeting Alternative G2 - Dismissed

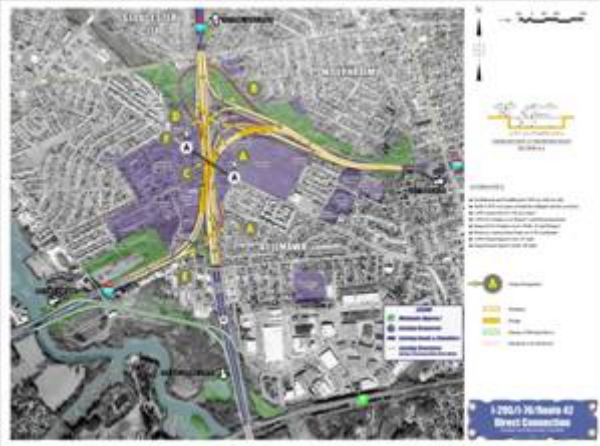


CROSS-SECTION AT BROWNING ROAD
SECTION A-A

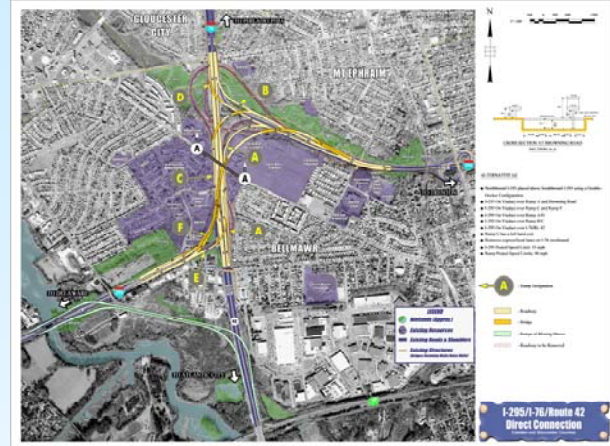


**I-295/I-76/Route 42
Direct Connection**
Camden and Gloucester Counties

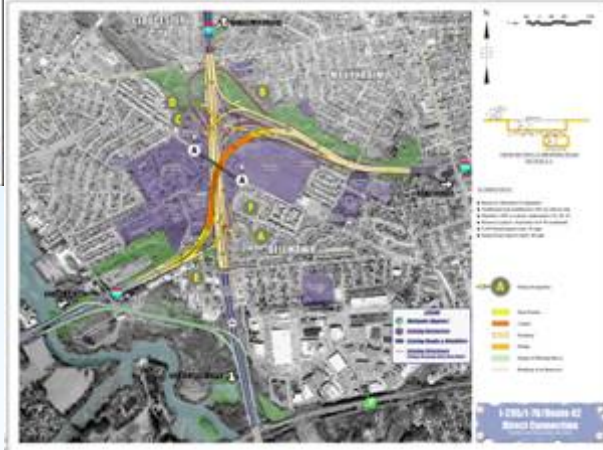
**Recommended Alternatives
Agency Coordination Meeting**



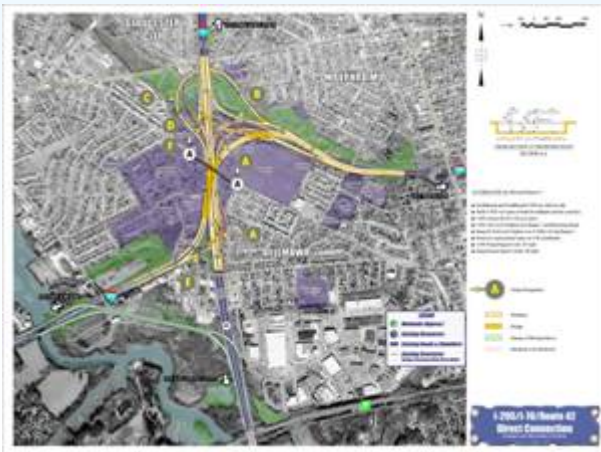
Alternative D



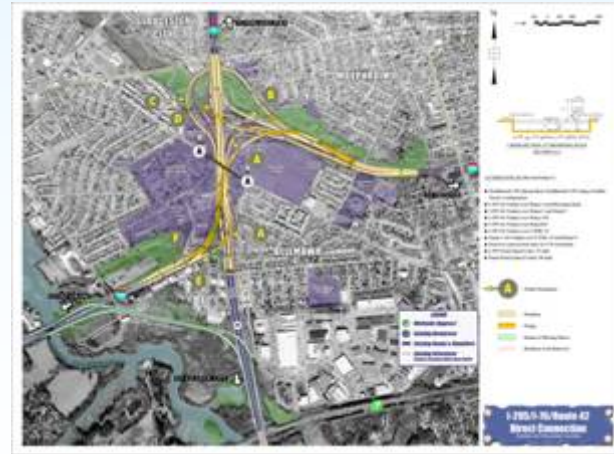
Alternative G2



Alternative K



Alternative D1



Alternative H1



**I-295/I-76/Route 42
Direct Connection**
Camden and Gloucester Counties

Potential Residential and Commercial ROW Impacts



Alternative D
Total Residences Impacted - 22
Total Businesses Impacted - 8

Alternative D1
Total Residences Impacted - 24
Total Businesses Impacted - 9



I-295/I-76/Route 42 Direct Connection

Camden and Gloucester Counties

Potential Community and Recreational ROW Impacts



Alternative D
No Cemetery Plots Impacted
1 Park Impacted
Moderate Impacts on Schools

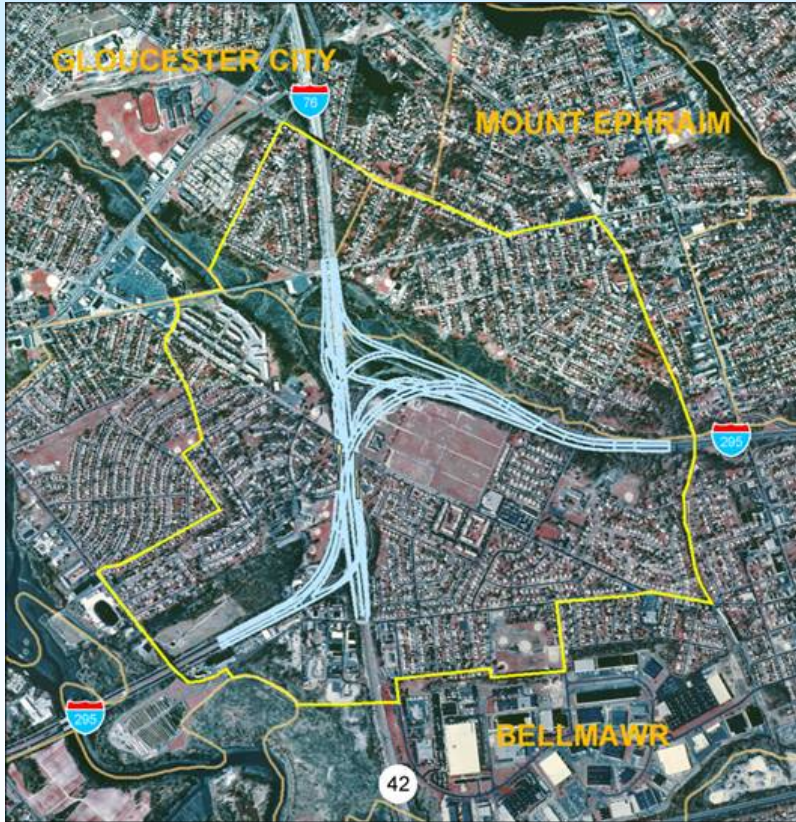


Alternative D1
No Cemetery Plots Impacted
2 Park Impacted
Moderate Impact on Schools

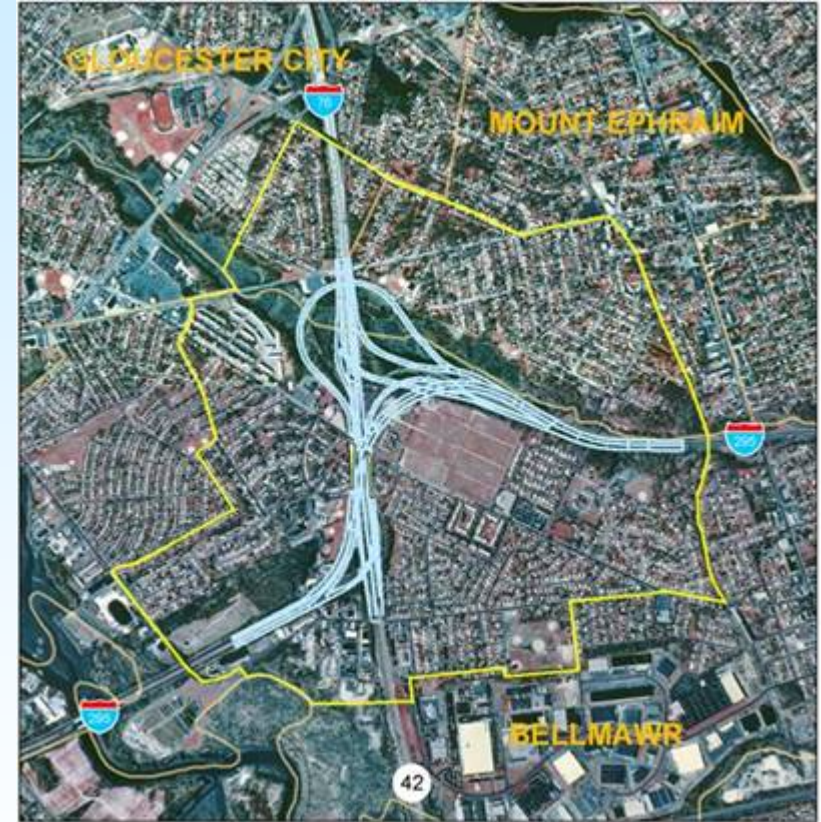


Potential Socioeconomic Impacts

**I-295/I-76/Route 42
Direct Connection**
Camden and Gloucester Counties



Alternative D
Low Potential Impacts



Alternative D1
Low Potential Impacts



**I-295/I-76/Route 42
Direct Connection**
Camden and Gloucester Counties

Potential Floodplain Impacts Alternative D1



Alternative D
Potential Impacts – 6 Acres

Alternative D1
Potential Impacts – 13.5 Acres



**I-295/I-76/Route 42
Direct Connection**
Camden and Gloucester Counties

Potential Wetland Impacts



Alternative D
Potential Impacts – 8 Acres



Alternative D1
Potential Impacts – 11.5 Acres



**I-295/I-76/Route 42
Direct Connection**
Camden and Gloucester Counties

Potential Residential and Commercial ROW Impacts



Alternative G2

Total Residences Impacted - 22

Total Businesses Impacted - 10

Alternative H1

Total Residences Impacted - 32

Total Businesses Impacted - 10



**I-295/I-76/Route 42
Direct Connection**
Camden and Gloucester Counties

**Potential Community and
Recreational ROW Impacts**



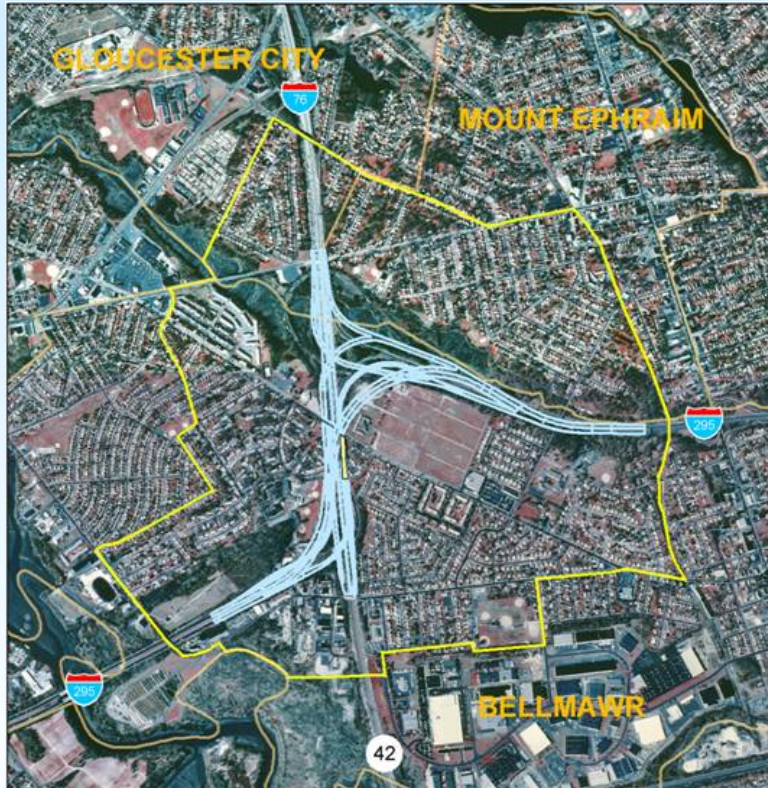
Alternative G2
 No Cemetery Plots Impacted
 1 Park Impacted
 Low Impact on Schools

Alternative H1
 No Cemetery Plots Impacted
 2 Park Impacted
 Moderate Impact on Schools



Potential Socioeconomic Impacts

**I-295/I-76/Route 42
Direct Connection**
Camden and Gloucester Counties



Alternative G2
Low Potential Impacts



Alternative H1
Low Potential Impacts



**I-295/I-76/Route 42
Direct Connection**
Camden and Gloucester Counties

Potential Floodplain Impacts



Alternative G2
Potential Impacts – 7 Acres



Alternative H1
Potential Impacts – 12.5 Acres



**I-295/I-76/Route 42
Direct Connection**
Camden and Gloucester Counties

Potential Wetlands Impacts



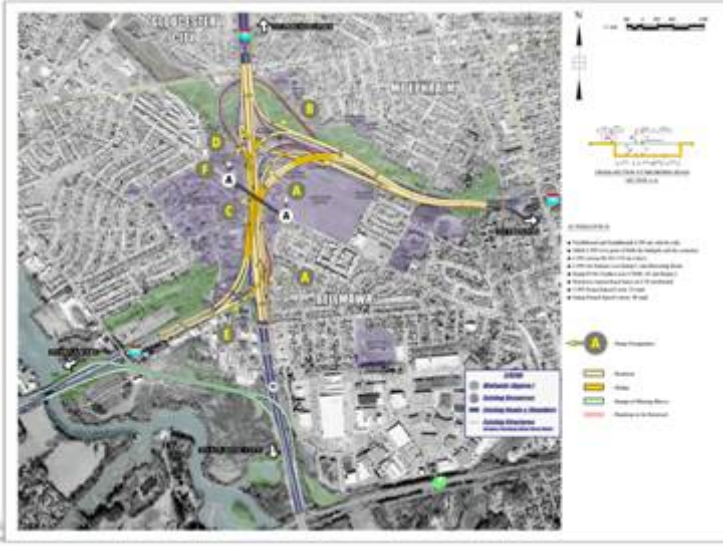
Alternative G2
Potential Impacts – 9 Acres

Alternative H1
Potential Impacts – 11.5 Acres

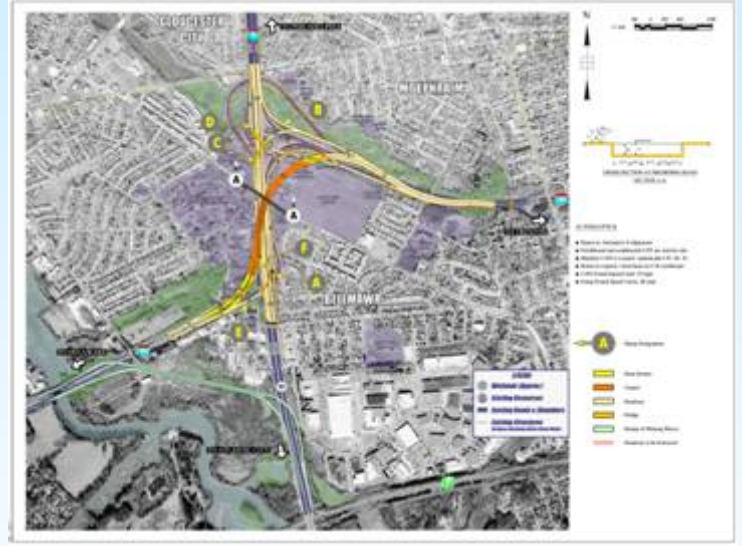


**I-295/I-76/Route 42
Direct Connection**
Camden and Gloucester Counties

**Recommended Alternatives
Community Action Committee**



Alternative D



Alternative K



**I-295/I-76/Route 42
Direct Connection**
Camden and Gloucester Counties

**Alternatives Dismissed from
Further Study**



Alternative E
 Total Residences Impacted- 189
 Total Businesses Impacted – 11
 124 Cemetery Plots
 High Socioeconomic Impacts
 Total Wetlands Impacts – 4.5
 Total Floodplain Impacts – 3.5



Alternative E2
 Total Residences Impacted - 190
 Total Businesses Impacted – 12
 124 Cemetery Plots
 High Socioeconomic Impacts
 Total Wetlands Impacts – 8.5
 Total Floodplain Impacts - 11



**I-295/I-76/Route 42
Direct Connection**
Camden and Gloucester Counties

**Alternatives Dismissed from
Further Study**



Alternative I
 Total Residences Impacted - 53
 Total Businesses Impacted – 11
 3800 Cemetery Plots
 High Socioeconomic Impacts
 Total Wetlands Impacts - 2.5 Acres
 Total Floodplain Impacts – 2 Acres

Alternative I1
 Total Residences Impacted - 55
 Total Businesses Impacted – 11
 3800 Cemetery Plots
 High Socioeconomic Impacts
 Total Wetlands Impacts – 7 Acres
 Total Floodplain Impacts - 10



**I-295/I-76/Route 42
Direct Connection**
Camden and Gloucester Counties

Alternatives Dismissed from Further Study



Alternative J
Total Residences Impacted- 54
Total Businesses Impacted- 10
Moderate Socioeconomic Impacts
Total Wetlands Impacts- 15.5 Acres
Total Floodplain Impacts- 24 Acres



Alternative L
Total Residences Impacted- 32
Total Businesses Impacted- 10
Low Socioeconomic Impacts
Total Wetlands Impacts- 17 Acres
Total Floodplain Impacts- 16.5 Acres



**I-295/I-76/Route 42
Direct Connection**
Camden and Gloucester Counties

**Alternatives Dismissed from
Further Study**



Alternative A
 Total Residences Impacted- 49
 Total Businesses Impacted- 9
 Moderate Socioeconomic Impacts
 Total Wetland Impacts- 17 Acres
 Total Floodplain Impacts- 16.5 Acres



Alternative A1
 Total Residences Impacted- 49
 Total Businesses Impacted- 9
 Moderate Socioeconomic Impacts
 Total Wetlands Impacts- 21 Acres
 Total Floodplain Impacts- 23.5 Acres



Alternative A2 – 23.5 Acres
 Total Residences Impacted- 49
 Total Businesses Impacted- 9
 Moderate Socioeconomic Impacts
 Total Wetlands Impacts - 20.5 Acres
 Total Floodplain Impacts- 20.5 Acres



**I-295/I-76/Route 42
Direct Connection**
Camden and Gloucester Counties

**Alternatives Dismissed from
Further Study**



Alternative B
 Total Residences Impacted- 56
 Total Businesses Impacted- 10
 Moderate Socioeconomic Impacts
 Total Wetlands Impacts- 12.5 Acres
 Total Floodplain Impacted- 20 Acres



Alternative B1
 Total Residences Impacted- 58
 Total Businesses Impacted- 10
 Moderate Socioeconomic Impacts
 Total Wetlands Impacts- 13.5 Acres
 Total Floodplain Impacted- 22 Acres



Alternative B2
 Total Residences Impacted- 73
 Total Businesses Impacted- 10
 Moderate Socioeconomic Impacts
 Total Wetlands Impacts- 16.5 Acres
 Total Floodplain Impacts- 29 Acres



**I-295/I-76/Route 42
Direct Connection**
Camden and Gloucester Counties

**Alternatives Dismissed from
Further Study**



Alternative C
 Total Residences Impacted- 34
 Total Businesses Impacted- 8
 Low Socioeconomic Impacts
 Total Wetlands Impacts- 11.5 Acres
 Total Floodplain Impacts- 21 Acres



Alternative C1
 Total Residences Impacted- 36
 Total Businesses Impacts- 8
 Low Socioeconomic Impacts
 Total Wetlands Impacts- 16 Acres
 Total Floodplain Impacts- 28 Acres



Alternative C2
 Total Residences Impacted- 33
 Total Business Impacted – 9
 Low Socioeconomic Impacts
 Total Wetlands Impacts- 15 Acres
 Total Floodplain Impacts- 27.5 Acres



**I-295/I-76/Route 42
Direct Connection**
Camden and Gloucester Counties

**Alternatives Dismissed from
Further Study**



Alternative F
 Total Residences Impacted- 24
 Total Business Impacted – 9
 Low Socioeconomic Impacts
 Total Wetlands Impacted- 16 Acres
 Total Floodplain Impacted- 16 Acres



Alternative F1
 Total Residences Impacted- 26
 Total Businesses Impacted- 9
 Low Socioeconomic Impacts
 Total Wetlands Impacts- 20.5 Acres
 Total Floodplain Impacts- 23 Acres



Alternative F2
 Total Residential Impacted- 22
 Total Businesses Impacted- 9
 Low Socioeconomic Impacts
 Total Wetlands Impacts- 20.5 Acres
 Total Floodplain Impacts- 21 Acres





Next Steps

- Finalize The Short List of Alternatives
- Public Information Center
- Begin Detailed Technical Studies on Shortlisted Alternatives

