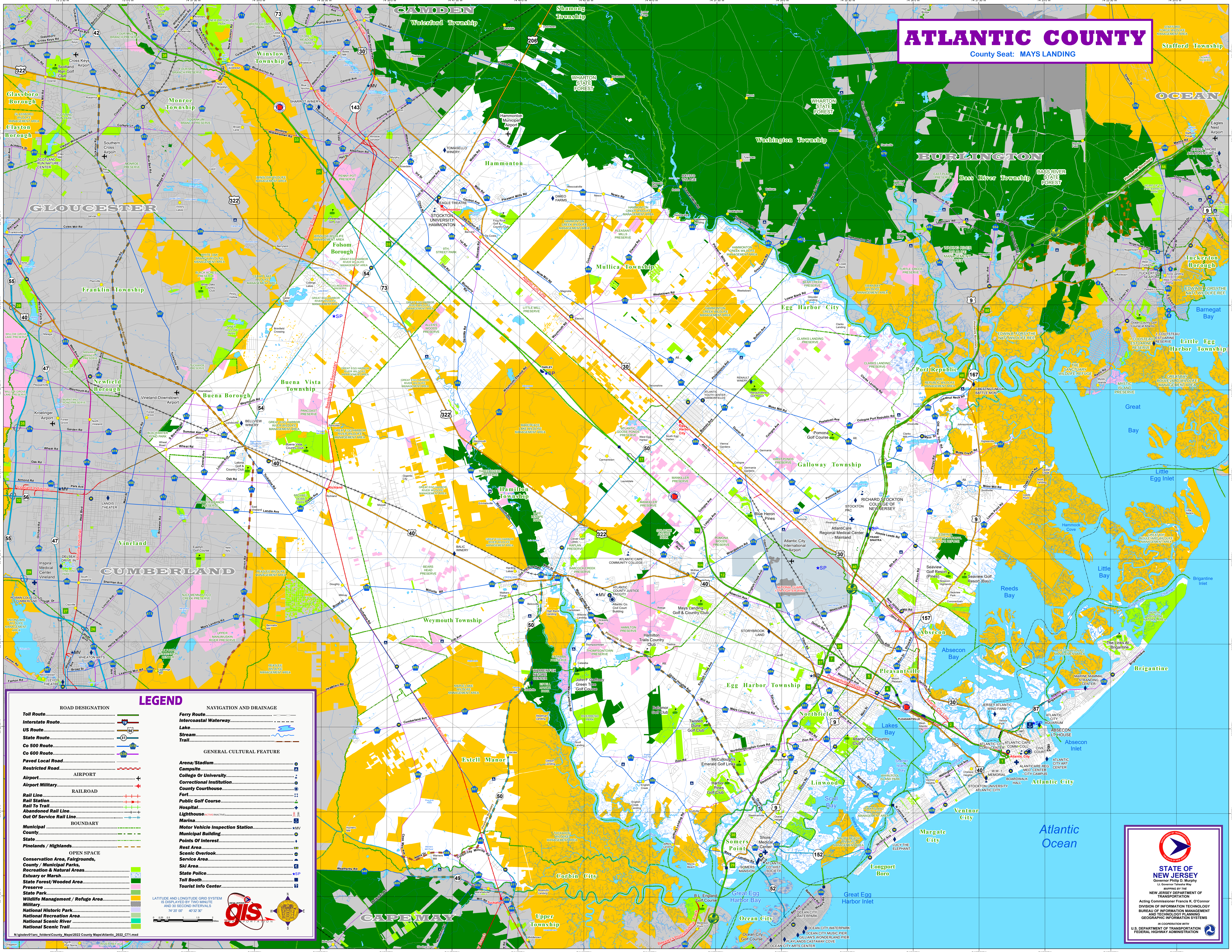


ATLANTIC COUNTY

County Seat: MAYS LANDING



LEGEND

ROAD DESIGNATION	NAVIGATION AND DRAINAGE
Toll Route	Ferry Route
Interstate Route	Intercoastal Waterway
US Route	Lake
State Route	Stream
Co 500 Route	Trail
Co 600 Route	
Paved Local Road	
Restricted Road	
AIRPORT	
Airport Military	
RAILROAD	
Rail Line	
Rail Station	
Rail To Trail	
Abandoned Rail Line	
Out Of Service Rail Line	
BOUNDARY	
Municipal	
County	
State	
Pinelands / Highlands	
OPEN SPACE	
Conservation Area, Fairgrounds, County / Municipal Parks, Recreation & Natural Areas	
Estuary or Marsh	
State Forest / Wooded Area	
Preserve	
State Park	
Wildlife Management / Refuge Area	
Military	
National Historic Park	
National Recreation Area	
National Scenic River	
National Scenic Trail	

GENERAL CULTURAL FEATURE
Arena / Stadium
Campsite
College Or University
Correctional Institution
County Courthouse
Fort
Public Golf Course
Hospital
Lighthouse
Marina
Motor Vehicle Inspection Station
Municipal Building
Points Of Interest
Rest Area
Scenic Overlook
Service Area
State Police
Toll Booth
Tourist Info Center

LATITUDE AND LONGITUDE GRID SYSTEM IS DISPLAYED BY TWO MINUTE AND 30 SECOND INTERVALS
 74°20'00" 47°32'30"

gis

N:\gisdev\harc_folders\County_Maps\2022_County_Maps\Atlantic_2022_C1.mxd

STATE OF NEW JERSEY
 Governor Philip D. Murphy
 Lt. Governor Tahesia Way

SPONSORED BY THE
 NEW JERSEY DEPARTMENT OF
 TRANSPORTATION

ACTING COMMISSIONER FRANCIS K. O'CONNOR
 DIVISION OF INFORMATION TECHNOLOGY
 BUREAU OF INFORMATION MANAGEMENT
 AND TECHNOLOGY PLANNING
 GEOGRAPHIC INFORMATION SYSTEMS

IN COOPERATION WITH
 U.S. DEPARTMENT OF TRANSPORTATION
 FEDERAL HIGHWAY ADMINISTRATION